



Guide Price
£340,000

Freehold

2x  1x  1x 

**Manaton Close,
Haywards Heath, West
Sussex, RH16**

OVER 60?

Secure this property
for up to **59% less!**

cubitt & west
Helping you move forwards



Main features

- Cul-de-sac location
- New combi boiler in the last 5 months & radiators
- Garage & off road parking
- Walking distance to the town centre & train station
- Large rear garden

Accommodation

GROUND FLOOR

Hallway
Lounge/Dining Room: 22'4 x 11'9 (6.81m x 3.58m)
Kitchen: 8'7 x 6'6 (2.62m x 1.98m)

FIRST FLOOR

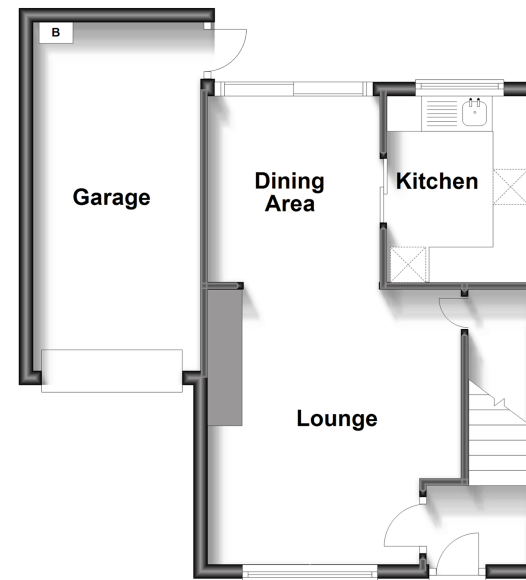
Landing
Bedroom 1: 12'1 x 11'10 (3.69m x 3.61m)
Bedroom 2: 9'7 x 7'11 (2.92m x 2.41m)
Bathroom

OUTSIDE

Garage: 16'4 x 7'9 (4.98m x 2.36m)
Front & Rear Garden

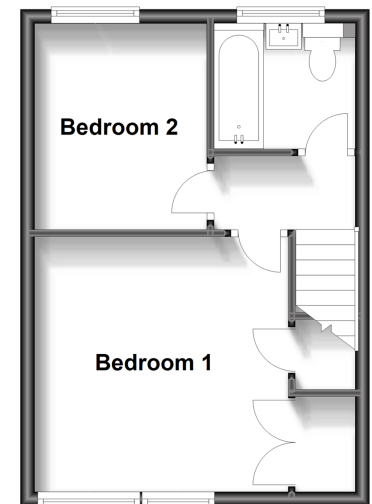
Ground Floor

Approx. 42.2 sq. metres (454.7 sq. feet)



First Floor

Approx. 30.2 sq. metres (324.9 sq. feet)



Call Haywards Heath - 01444 411132 ■ cubittandwest.co.uk

■ Legal advice should be taken to verify fixtures/fittings, planning, alterations and/or lease details
■ Through a Homewise Home For Life Plan people aged 60+ can secure this property for up to 59% less, by purchasing a Lifetime Lease.

■ Appliances & services are untested, dimensions are approximate and floor plans are not to scale

