



Price

£830,000

Freehold

4x  3x  3x 

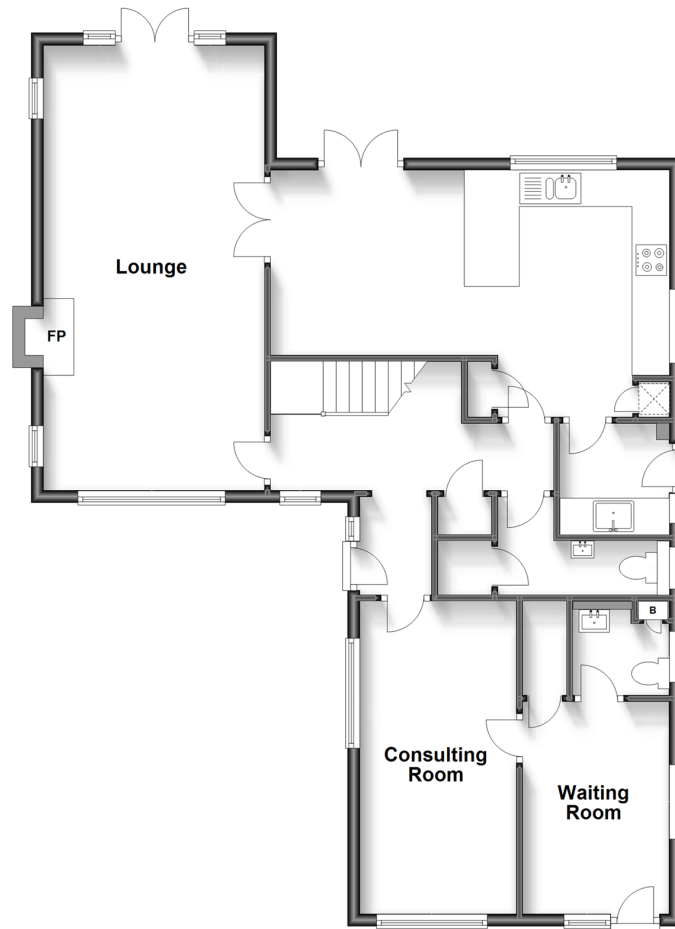
**Fox Hill, Haywards
Heath, West Sussex,
RH16**

OVER 60?

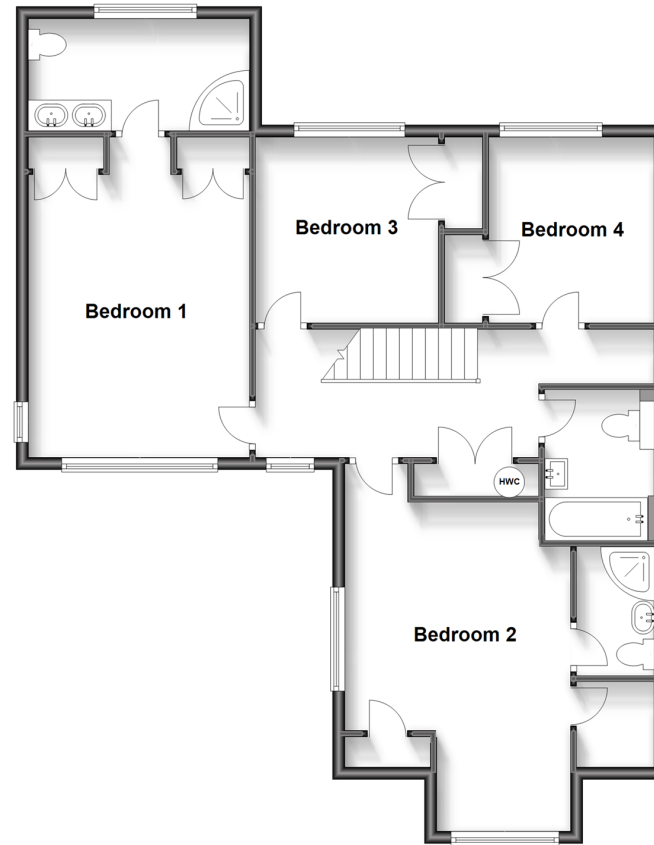
Secure this property
for up to **59% less!**

cubitt&west
Helping you move forwards

Ground Floor
Approx. 95.8 sq. metres (1031.5 sq. feet)



First Floor
Approx. 88.3 sq. metres (950.9 sq. feet)



Accommodation

GROUND FLOOR

Hallway
Cloakroom
Lounge: 23'9 x 11'10 (7.24m x 3.61m)
Kitchen/Dining Room: 21'8 x 13'2 (6.61m x 4.02m)
Utility Room: 6'0 x 5'10 (1.83m x 1.78m)
Separate WC
Waiting Room: 11'5 x 8'1 (3.48m x 2.47m)
Consulting Area: 16'11 x 8'4 (5.16m x 2.54m)

FIRST FLOOR

Landing
Bedroom 1: 18'1 x 11'11 (5.52m x 3.63m)
En-Suite Shower Room
Bedroom 2: 17'5 x 12'3 (5.31m x 3.74m)
En-Suite Shower Room
Bedroom 3: 10'1 x 9'10 (3.08m x 3.00m)
Bedroom 4: 9'10 x 8'10 (3.00m x 2.69m)
Bathroom

OUTSIDE

Front & Rear Garden
Off-Road Parking



Main features

- No forward chain
- Current vendors have lived here for over 25 years
- Garage now converted into waiting room, WC, and consulting room
- Open fire place in large lounge
- 2x En-suites & family bathroom
- Ample off road parking
- Secluded rear garden



Nearest Schools

Primary Schools: St Wilfrid's CofE Primary, Haywards Heath 0.7 miles, St Joseph's Catholic Primary, Haywards Heath 0.7 miles, Heyworth Primary 0.9 miles



Transport Information

Train Stations: Haywards Heath 1.2 miles, Wivelsfield 1.6 miles, Burgess Hill 2.5 miles



Address

Fox Hill, Haywards Heath, West Sussex, RH16



Directions

For directions to this property please contact us.



cubitt&west
Helping you move forwards

Call Haywards Heath Branch 01444 411132 ■ cubittandwest.co.uk



- Legal advice should be taken to verify fixtures/fittings, planning, alterations and/or lease details
- Appliances & services are untested, dimensions are approximate and floor plans are not to scale
- Through a Homewise Home For Life Plan people aged 60+ can secure this property for up to 59% less, by purchasing a Lifetime Lease.



22705580/20230814/DD/DD