



Guide Price
£450,000

Freehold

4x  1x  1x 

**Jobes, Balcombe,
Haywards Heath, West
Sussex, RH17**

OVER 60?

Secure this property
for up to **59% less!**

cubitt&west
Helping you move forwards



Main features

- Cul-de-sac location
- Walking distance to train station
- Current vendor has converted the loft into an additional bedroom
- New boiler installed December 2022
- Secluded rear garden with artificial grass

Accommodation

GROUND FLOOR

Hallway
Cloakroom
Lounge: 17'7 x 11'10 (5.36m x 3.61m)
Kitchen/Dining Room: 17'4 x 11'4 (5.29m x 3.46m)

FIRST FLOOR

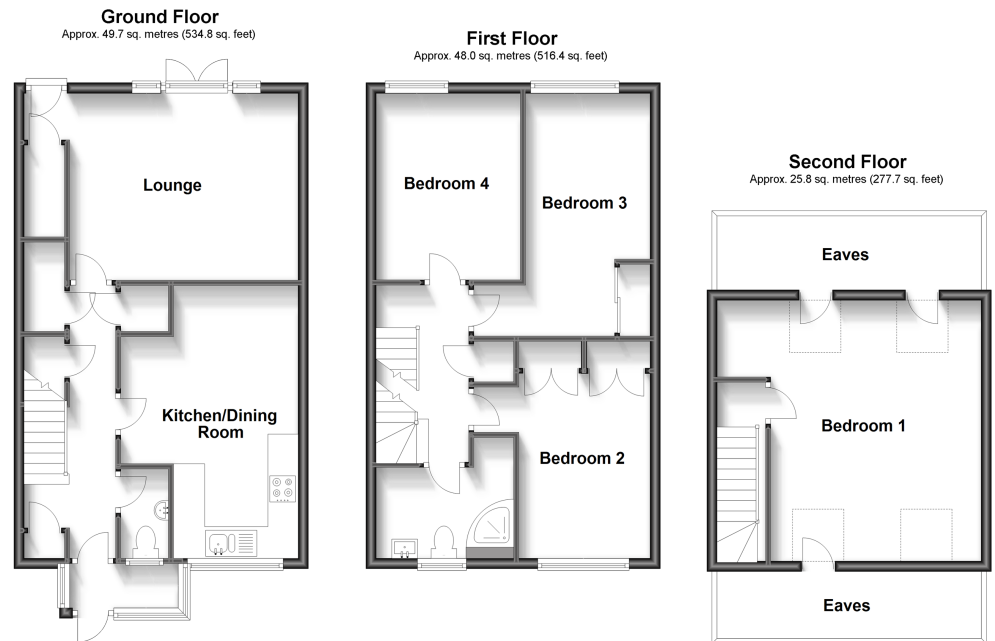
Landing
Bedroom 2: 15'3 x 11'3 (4.65m x 3.43m)
Bedroom 3: 11'9 x 11'3 (3.58m x 3.43m)
Bedroom 4: 11'9 x 8'11 (3.58m x 2.72m)

SECOND FLOOR

Bedroom 1: 16'6 x 13'6 (5.03m x 4.12m)

OUTSIDE

Front & Rear Gardens



Call Haywards Heath - 01444 411132 ■ cubittandwest.co.uk

■ Legal advice should be taken to verify fixtures/fittings, planning, alterations and/or lease details
■ Through a Homewise Home For Life Plan people aged 60+ can secure this property for up to 59% less, by purchasing a Lifetime Lease.

■ Appliances & services are untested, dimensions are approximate and floor plans are not to scale