



**Guide Price**  
**£350,000**

**Freehold**

4x  1x  2x 

**Bankside, Bolney,  
Haywards Heath, West  
Sussex, RH17**

**OVER 60?**

Secure this property  
for up to **59% less!**

**cubitt&west**  
Helping you move forwards



## Main features

- No forward chain
- Terraced house in idyllic village location
- Open fire place in the lounge
- Large secluded rear garden with stunning views
- Countryside walks nearby
- Easy access to A23

## Accommodation

### GROUND FLOOR

Hallway  
Cloakroom  
Lounge: 13'7 x 11'8 (4.14m x 3.56m)  
Kitchen: 9'8 x 9'4 (2.95m x 2.85m)  
Dining Area: 11'11 x 8'4 (3.63m x 2.54m)

### FIRST FLOOR

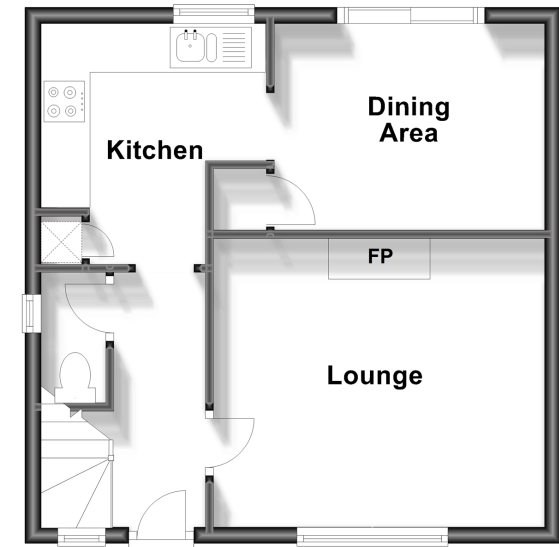
Landing  
Bedroom 1: 14'1 x 9'10 (4.30m x 3.00m)  
Bedroom 2: 11'5 x 9'7 (3.48m x 2.92m)  
Bedroom 3: 10'5 x 7'11 (3.18m x 2.41m)  
Bedroom 4: 10'0 x 7'1 (3.05m x 2.16m)  
Bathroom

### OUTSIDE

Front & Rear Garden  
Shed with power

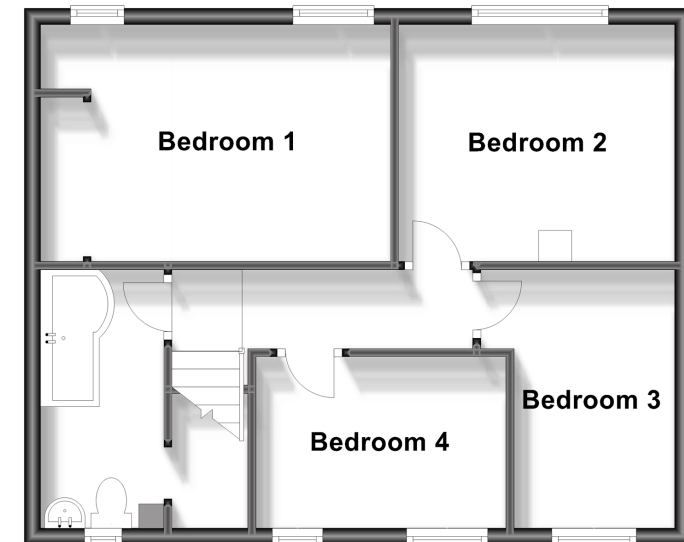
## Ground Floor

Approx. 38.3 sq. metres (412.7 sq. feet)



## First Floor

Approx. 48.9 sq. metres (526.4 sq. feet)



**Call Haywards Heath - 01444 411132 ■ [cubittandwest.co.uk](http://cubittandwest.co.uk)**

- Legal advice should be taken to verify fixtures/fittings, planning, alterations and/or lease details
- Appliances & services are untested, dimensions are approximate and floor plans are not to scale
- Through a Homewise Home For Life Plan people aged 60+ can secure this property for up to 59% less, by purchasing a Lifetime Lease.



22705603/20240116/DD/DD