

**OVER 60?**

Secure this property  
for up to **59% less!**



**Price**

**£875,000**

**Freehold**

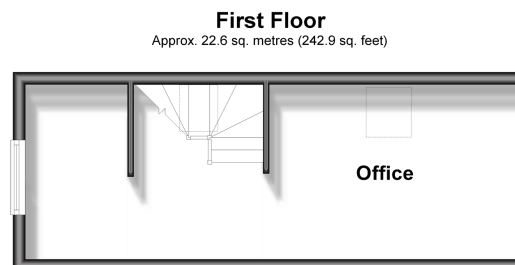
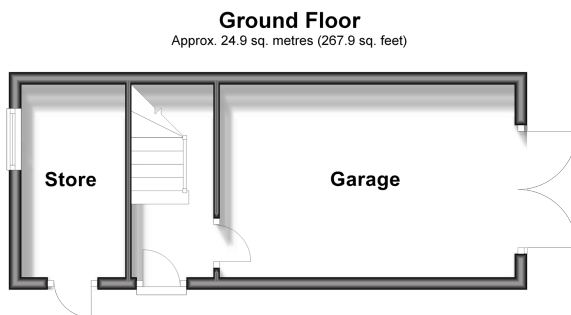
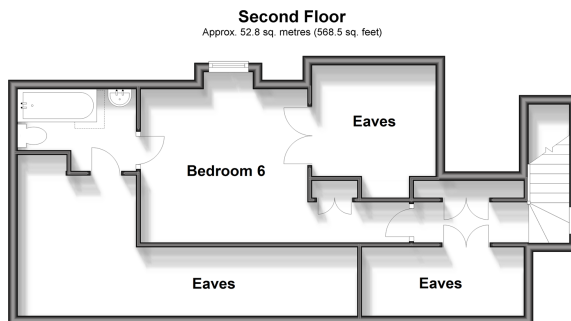
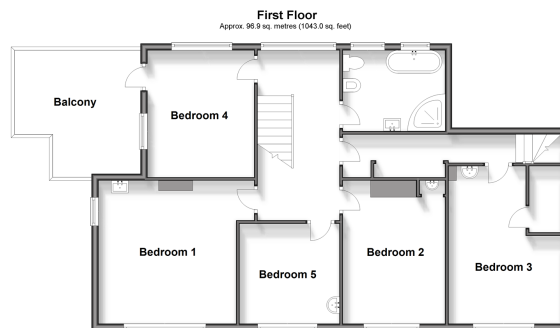
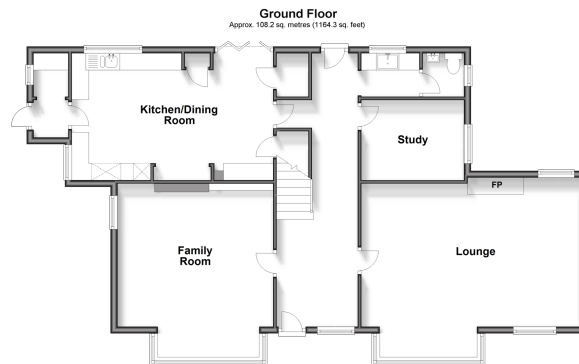
6x  2x  3x 

Morley House, Franklynn Road, Haywards

Heath, West Sussex, RH16

**cubitt&west**  
Helping you move forwards





## Accommodation

### GROUND FLOOR

Entrance Hall

Cloakroom

Lounge: 21'1 x 14'7 (6.43m x 4.45m)

Family Room: 17'0 x 15'0 (5.19m x 4.58m)

Study: 9'11 x 7'11 (3.02m x 2.41m)

Kitchen/Dining Room: 19'7 x 12'6 (5.97m x 3.81m)

Utility Room: 8'3 x 3'4 (2.52m x 1.02m)

### FIRST FLOOR

Landing

Bedroom 1: 14'1 x 13'3 (4.30m x 4.04m)

Bedroom 2: 12'9 x 10'0 (3.89m x 3.05m)

Bedroom 3: 15'4 x 10'0 (4.68m x 3.05m)

Bedroom 4: 12'6 x 10'4 (3.81m x 3.15m)

Bedroom 5: 10'0 x 10'0 (3.05m x 3.05m)

Family Bathroom

### SECOND FLOOR

Landing

Bedroom 6: 29'11 maximum x 12'3 (9.12m x 3.74m)

En-suite Bathroom

### OUTSIDE

Front Garden

Rear Garden

Garage: 16'5 x 10'1 (5.01m x 3.08m)

Off Road Parking



## Main features

- Built by Thomas White ' It's a master builders house'
- Plenty of original period features throughout
- Current vendors have lived there for 25 years
- Off road parking for multiple vehicles
- Detached garage with home office
- Walking distance to train station and town centre
- Balcony area with stunning views
- Secluded rear garden



### Nearest Schools

Primary Schools: St Wilfrid's CofE Primary, Haywards Heath 0.2 miles, St Joseph's Catholic Primary, Haywards Heath 0.4 miles, Heyworth Primary 0.5 miles. Secondary Schools: Oathall Community College 0.9 miles, Warden Park School 1.9 miles, Chailey Heritage School 3.0 miles



### Transport Information

Train Stations: Haywards Heath 1.0 miles, Wivelsfield 2.2 miles, Burgess Hill 3.1 miles



### Address

Morley House, Franklynn Road, Haywards Heath, West Sussex, RH16



### Directions

For directions to this property please contact us.





**cubitt&west**  
Helping you move forwards

Call Haywards Heath Branch 01444 411132 ■ [cubittandwest.co.uk](https://cubittandwest.co.uk)



- Legal advice should be taken to verify fixtures/fittings, planning, alterations and/or lease details
- Appliances & services are untested, dimensions are approximate and floor plans are not to scale
- Through a Homewise Home For Life Plan people aged 60+ can secure this property for up to 59% less, by purchasing a Lifetime Lease.



22705679/20231120/SEH/DD