



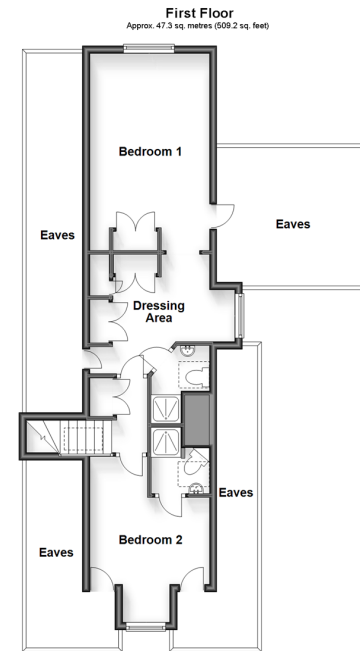
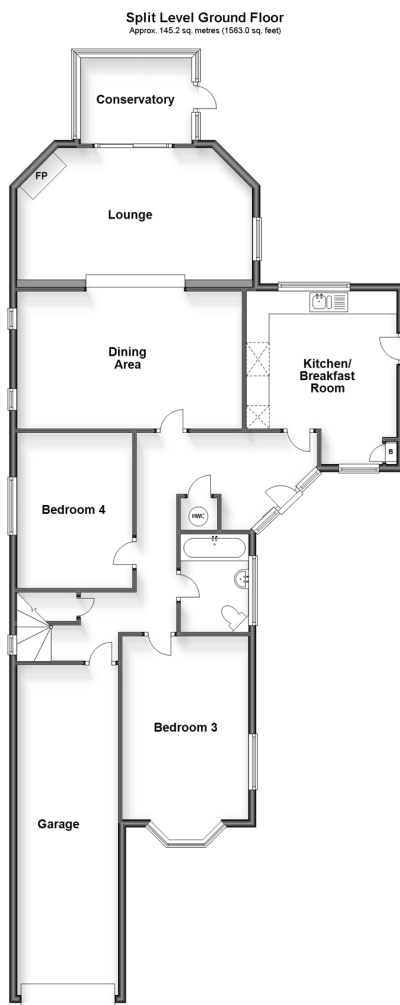
Price
£750,000

Freehold

4x  3x  2x 

**Coldharbour Lane, North
Chailey, Lewes, East
Sussex, BN8**

cubitt&west
Helping you move forwards



Accommodation

GROUND FLOOR

Entrance Hall
 Lounge: 20'5 x 13'1 (6.23m x 3.99m)
 Dining Room: 19'7 x 11'10 (5.97m x 3.61m)
 Conservatory: 9'9 x 7'8 (2.97m x 2.34m)
 Kitchen/Breakfast Room: 15'0 x 13'9 (4.58m x 4.19m)
 Bedroom 3: 18'4 x 10'11 (5.59m x 3.33m)
 Bedroom 4: 13'5 x 9'10 (4.09m x 3.00m)
 Bathroom

FIRST FLOOR

Landing
 Bedroom 1: 17'0 x 10'3 (5.19m x 3.13m)
 Dressing Area: 10'9 x 10'8 (3.28m x 3.25m)
 En-Suite Shower Room
 Bedroom 2: 14'3 x 10'4 (4.35m x 3.15m)
 En-Suite Shower Room

OUTSIDE

Off Road Parking
 Integral Garage: 28'4 x 9'0 (8.64m x 2.75m)
 Front Garden
 Rear Garden



Main features

- Lovely quiet village location
- Large secluded west facing rear garden
- A useful work shop in the rear garden with insulation, power & lighting, could make an ideal home office
- Integral dishwasher, washing machine and tumble dryer
- En-suite shower room and dressing room for bedroom 1



Nearest Schools

Primary Schools: Chailey St Peter's C of E Primary 0.9 miles, Newick C of E Primary 1.5 miles
 Secondary Schools: Chailey School 2.6 miles, Oathall Community College 3.9 miles
 Further Education: Chailey Heritage School 0.4 miles



Transport Information

Train Stations: Billingshurst 19. miles, Pulborough 22. miles, Amberley 23. miles



Address

Coldharbour Lane, North Chailey, Lewes, East Sussex, BN8



Directions

For directions to this property please contact us.



cubitt&west
Helping you move forwards

Call Haywards Heath Branch 01444 411132 ■ cubittandwest.co.uk



■ Legal advice should be taken to verify fixtures/fittings, planning, alterations and/or lease details ■ Appliances & services are untested, dimensions are approximate and floor plans are not to scale



EPC RATING



22705680/20231117/DD/DD