



**Price**  
**£400,000**

**Freehold**

2x  1x  1x 

**Hillcrest Close, Scaynes  
Hill, Haywards Heath,  
West Sussex, RH17**

**OVER 60?**

Secure this property  
for up to **59% less!**

**cubitt&west**  
Helping you move forwards





## Main features

- No forward chain
- Cul-de-sac location
- Secluded rear garden
- Wood burner
- Garage & off road parking
- Countryside walks nearby

## Accommodation

### GROUND FLOOR

Entrance Hallway

Lounge: 14'2 x 13'7 (4.32m x 4.14m)

Kitchen/Dining Room: 20'5 x 8'10 (6.23m x 2.69m)

Bedroom 1: 11'11 x 11'0 (3.63m x 3.36m)

Bedroom 2: 11'0 x 10'1 (3.36m x 3.08m)

Bathroom

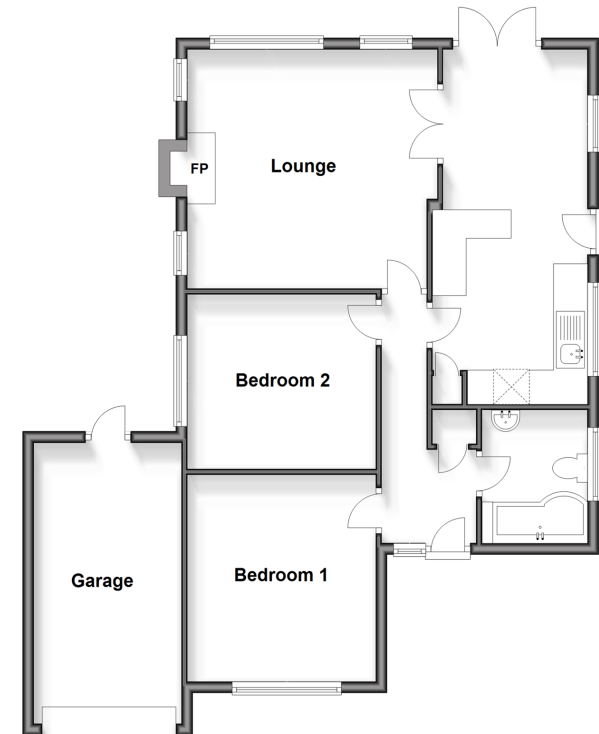
### OUTSIDE

Front & Rear Garden

Garage: 16'9 x 8'7 (5.11m x 2.62m)

Off Road Parking

**Ground Floor**  
Approx. 83.2 sq. metres (895.4 sq. feet)



**Call Haywards Heath - 01444 411132 ■ [cubittandwest.co.uk](http://cubittandwest.co.uk)**

■ Legal advice should be taken to verify fixtures/fittings, planning, alterations and/or lease details  
■ Through a Homewise Home For Life Plan people aged 60+ can secure this property for up to 59% less, by purchasing a Lifetime Lease.

■ Appliances & services are untested, dimensions are approximate and floor plans are not to scale



22705681/20240301/DD/DD