



**Guide Price**  
**£240,000**

**Freehold**

1x  1x  1x 

**Dyall Close, Burgess Hill,  
West Sussex, RH15**

**OVER 60?**

Secure this property  
for up to **59% less!**

**cubitt & west**  
Helping you move forwards





## Main features

- Private garden
- Re-fitted bathroom
- New carpets & redecorated throughout
- Convenience of 2 allocated parking spaces
- Easy access to A23

## Accommodation

### GROUND FLOOR

Entrance Hall

Lounge: 11'6 x 10'8 (3.51m x 3.25m)

Kitchen: 10'7 x 8'4 (3.23m x 2.54m)

### FIRST FLOOR

Landing

Bedroom: 11'6 x 10'9 up to fitted wardrobes (3.51m x 3.28m)

Bathroom

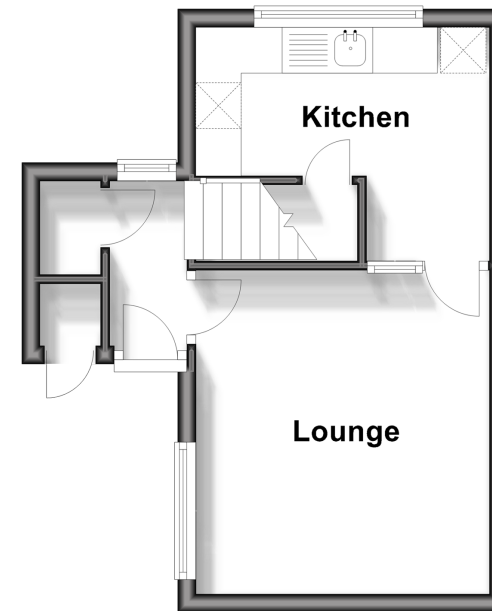
### OUTSIDE

Front & Rear Gardens

Allocated Parking Spaces x2

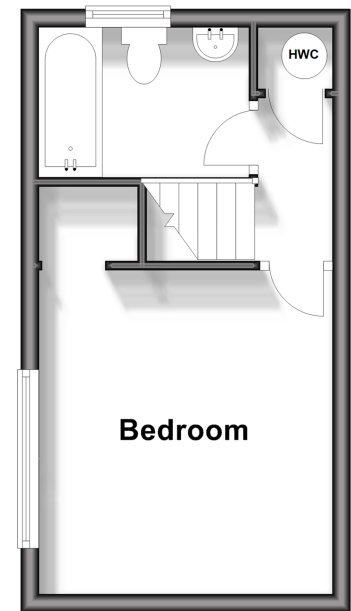
### Ground Floor

Approx. 23.1 sq. metres (248.9 sq. feet)



### First Floor

Approx. 20.1 sq. metres (215.9 sq. feet)



**Call Haywards Heath - 01444 411132 ■ [cubittandwest.co.uk](http://cubittandwest.co.uk)**

■ Legal advice should be taken to verify fixtures/fittings, planning, alterations and/or lease details  
 ■ Through a Homewise Home For Life Plan people aged 60+ can secure this property for up to 59% less, by purchasing a Lifetime Lease.

■ Appliances & services are untested, dimensions are approximate and floor plans are not to scale



22705707/20240226/DD/DD