



OVER 60?

Secure this property
for up to **59% less!**

Price

£425,000

Freehold

3x  1x  1x 

**Washington Road,
Haywards Heath, West
Sussex, RH16**

cubitt&west
Helping you move forwards



Main features

- The current seller has recently installed boiler, radiators, double glazing and re-wired
- Updated kitchen with integrated appliances
- Corner plot semi-detached house
- Garage & off road parking
- Walking distance to town & train station

Accommodation

GROUND FLOOR

Entrance Porch
Entrance Hallway
Cloakroom
Lounge/Diner: 19'0 x 11'7 (5.80m x 3.53m)
Kitchen: 12'11 x 10'0 (3.94m x 3.05m)

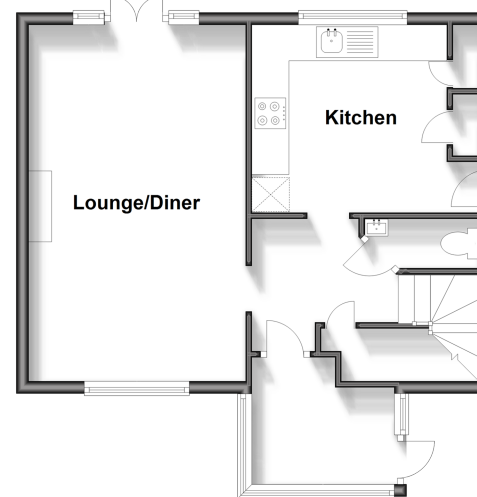
FIRST FLOOR

Landing
Bedroom 1: 12'2 up to fitted wardrobes x 10'2 (3.71m x 3.10m)
Bedroom 2: 11'9 up to fitted wardrobes x 11'8 (3.58m x 3.56m)
Bedroom 3: 11'9 x 6'11 (3.58m x 2.11m)
Shower Room

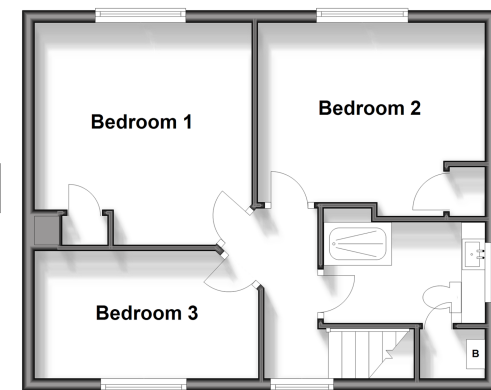
OUTSIDE

Front & Rear Garden
Garage: 22'0 x 12'3 (6.71m x 3.74m)
Off Road Parking

Ground Floor
Approx. 46.1 sq. metres (496.0 sq. feet)



First Floor
Approx. 42.2 sq. metres (454.5 sq. feet)



Call Haywards Heath - 01444 411132 ■ cubittandwest.co.uk

■ Legal advice should be taken to verify fixtures/fittings, planning, alterations and/or lease details
■ Through a Homewise Home For Life Plan people aged 60+ can secure this property for up to 59% less, by purchasing a Lifetime Lease.

■ Appliances & services are untested, dimensions are approximate and floor plans are not to scale