



**Price**

**£63,250**

**Leasehold**

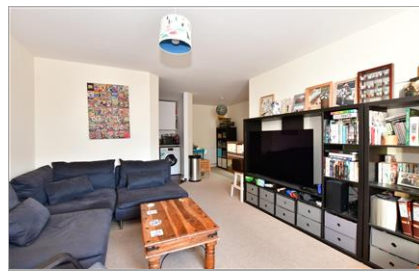
2x  1x  1x 

Chapman Way, Haywards Heath, West

Sussex, RH16

**cubitt&west**  
Helping you move forwards





## Main features

- No forward chain
- 25% shared ownership apartment
- Service charge £379.91 per month
- Rent £582.02 per month, ground rent £200 a year
- Allocated parking space
- Great opportunity for a first time buyer

## Accommodation

### FIRST FLOOR

Entrance Hallway

Lounge/Kitchen/Dining Room: (L-shaped) 13'11 x 11'6 (4.24m x 3.51m) plus 17'5 x 10'8 (5.31m x 3.25m)

Bedroom 1: 15'10 up to fitted wardrobes x 10'9 at widest point (4.83m x 3.28m)

Bedroom 2: 11'11 at widest point x 10'8 at widest point (3.63m x 3.25m)

Bathroom

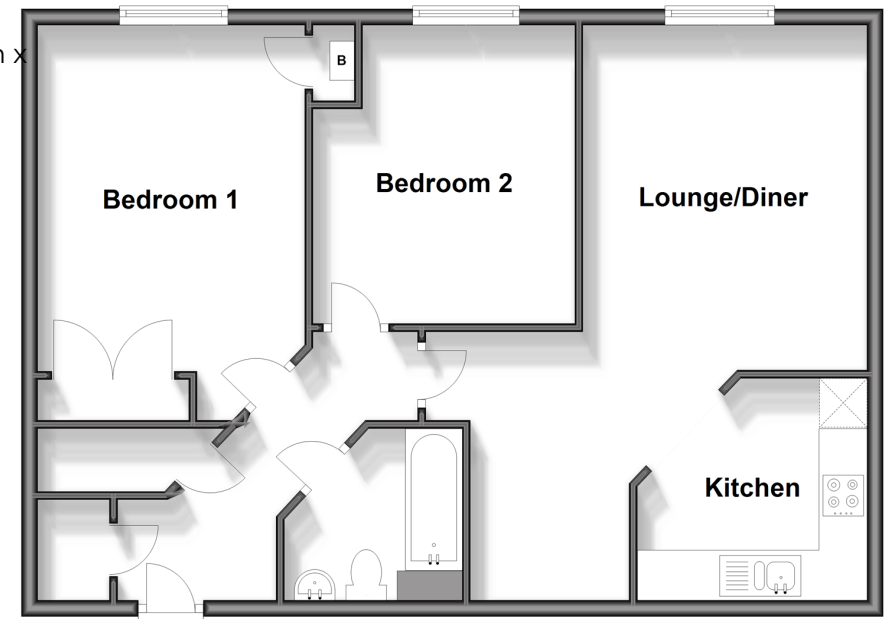
### OUTSIDE

Allocated Parking Space

Communal Garden

### First Floor

Approx. 71.9 sq. metres (774.1 sq. feet)



Call Haywards Heath - 01444 411132 ■ [cubittandwest.co.uk](http://cubittandwest.co.uk)

■ Legal advice should be taken to verify fixtures/fittings, planning, alterations and/or lease details

■ Appliances & services are untested, dimensions are approximate and floor plans are not to scale