



Guide Price
£375,000

Freehold

2x  2x  1x 

**Cants Lane, Burgess Hill,
West Sussex, RH15**

OVER 60?

Secure this property
for up to **59% less!**

cubitt&west
Helping you move forwards



Main features

- **Integral dishwasher & washing machine**
- **En-suite shower room**
- **Sunny rear garden**
- **The convenience of 2 allocated parking spaces**
- **Landscaped rear garden**

Accommodation

GROUND FLOOR

Entrance Hallway
Cloakroom
Lounge/Dining Room: 17'3 x 15'7 (5.26m x 4.75m)
Kitchen: 12'8 x 7'8 (3.86m x 2.34m)

FIRST FLOOR

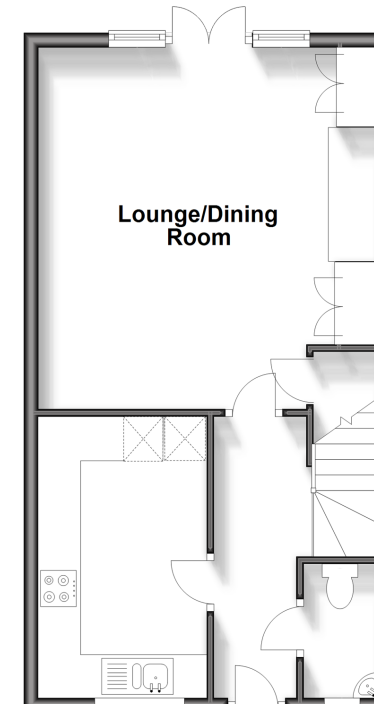
Landing
Bedroom 1: 15'6 at widest point x 10'10 (4.73m x 3.30m)
Bedroom 2: 14'0 at widest point x 10'2 (4.27m x 3.10m)
En Suite Shower Room
Bathroom

OUTSIDE

Front & Rear Garden
2 x Allocated Parking Spaces

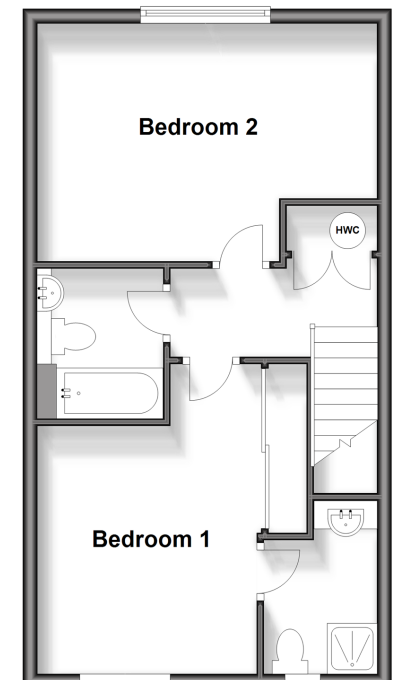
Ground Floor

Approx. 42.8 sq. metres (460.4 sq. feet)



First Floor

Approx. 42.8 sq. metres (460.4 sq. feet)



Call Haywards Heath - 01444 411132 ■ cubittandwest.co.uk

■ Legal advice should be taken to verify fixtures/fittings, planning, alterations and/or lease details
■ Through a Homewise Home For Life Plan people aged 60+ can secure this property for up to 59% less, by purchasing a Lifetime Lease.

■ Appliances & services are untested, dimensions are approximate and floor plans are not to scale

