



Guide Price
£600,000

Freehold

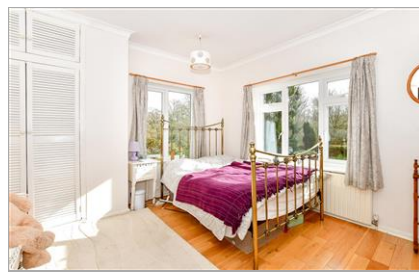
3x  1x  2x 

Highbridge Mill
Cottages, Cuckfield
Road, Ansty, Haywards
Heath, West Sussex,

OVER 60?

Secure this property
for up to **59% less!**

cubitt&west
Helping you move forwards



Main features

- Period property built in 1830
- Current vendor has lived here for 35 years
- Open fire place & wood burner
- Large secluded rear garden with stunning countryside views
- Off road parking

Accommodation

GROUND FLOOR

Entrance Hallway
Cloakroom
Lounge: 20'3 x 12'2 (6.18m x 3.71m)
Dining Room: 17'2 x 10'8 (5.24m x 3.25m)
Kitchen: 11'2 x 8'4 (3.41m x 2.54m)
Utility Room: 5'6 x 4'5 (1.68m x 1.35m)
Conservatory : 13'7 x 5'10 (4.14m x 1.78m)

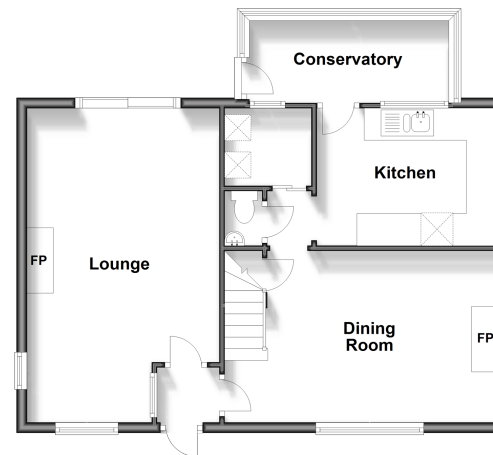
FIRST FLOOR

Landing
Bedroom 1: 17'0 x 11'7 (5.19m x 3.53m)
Bedroom 2: 12'1 x 11'11 (3.69m x 3.63m)
Bedroom 3: 8'2 x 7'8 (2.49m x 2.34m)
Bathroom
Toilet

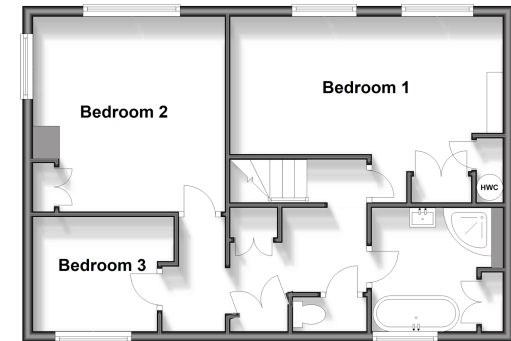
OUTSIDE

Front & Rear Garden
Off Road Parking

Ground Floor
Approx. 60.0 sq. metres (645.8 sq. feet)



First Floor
Approx. 53.2 sq. metres (572.2 sq. feet)



Call Haywards Heath - 01444 411132 ■ cubittandwest.co.uk

■ Legal advice should be taken to verify fixtures/fittings, planning, alterations and/or lease details
■ Through a Homewise Home For Life Plan people aged 60+ can secure this property for up to 59% less, by purchasing a Lifetime Lease.

■ Appliances & services are untested, dimensions are approximate and floor plans are not to scale



22705762/20240415/DD/DD