



**Guide Price**  
**£425,000**

**Freehold**

3x  1x  1x 

**Beech Hill, Haywards  
Heath, West Sussex,  
RH16**

**OVER 60?**

Secure this property  
for up to **59% less!**

**cubitt&west**  
Helping you move forwards





## Main features

- Recently replaced flooring & carpets
- Refitted kitchen with integral appliances & induction hobs
- Refitted bathroom
- Fully re-wired
- Garage & off road parking
- Secluded rear garden

## Accommodation

### GROUND FLOOR

Entrance Hallway

Lounge: 13'2 x 12'3 (4.02m x 3.74m)

Kitchen/Dining Room: 15'8 x 12'0 (4.78m x 3.66m)

### FIRST FLOOR

Landing

Bedroom 1: 13'0 up to fitted wardrobes x 9'3 (3.97m x 2.82m)

Bedroom 2: 11'10 at widest point x 9'4 (3.61m x 2.85m)

Bedroom 3: 9'0 up to fitted wardrobes x 6'1 (2.75m x 1.86m)

Bathroom

### OUTSIDE

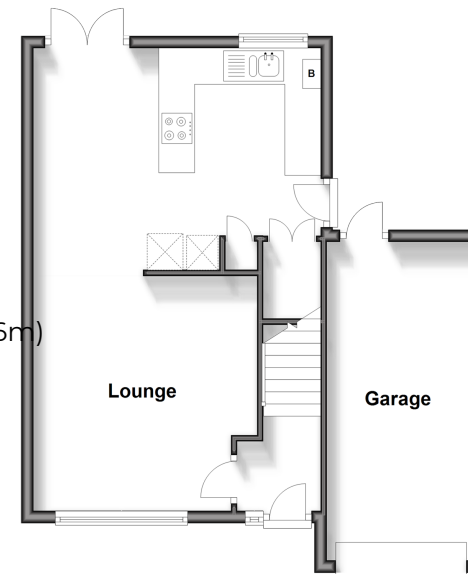
Front & Rear Garden

Garage: 17'2 x 8'2 (5.24m x 2.49m)

Off Road Parking

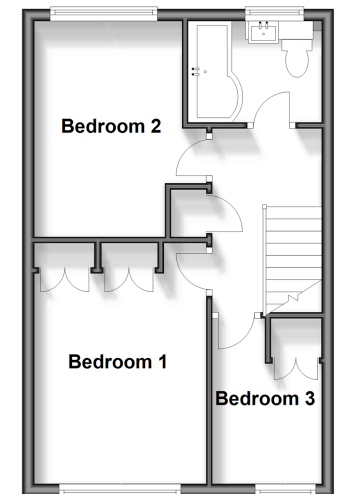
### Ground Floor

Approx. 49.7 sq. metres (534.9 sq. feet)



### First Floor

Approx. 36.3 sq. metres (391.0 sq. feet)



**Call Haywards Heath - 01444 411132 ■ [cubittandwest.co.uk](http://cubittandwest.co.uk)**

■ Legal advice should be taken to verify fixtures/fittings, planning, alterations and/or lease details  
 ■ Through a Homewise Home For Life Plan people aged 60+ can secure this property for up to 59% less, by purchasing a Lifetime Lease.

■ Appliances & services are untested, dimensions are approximate and floor plans are not to scale