



Price
£630,000

Freehold

4x  2x  1x 

**Penland Road, Haywards
Heath, West Sussex,
RH16**

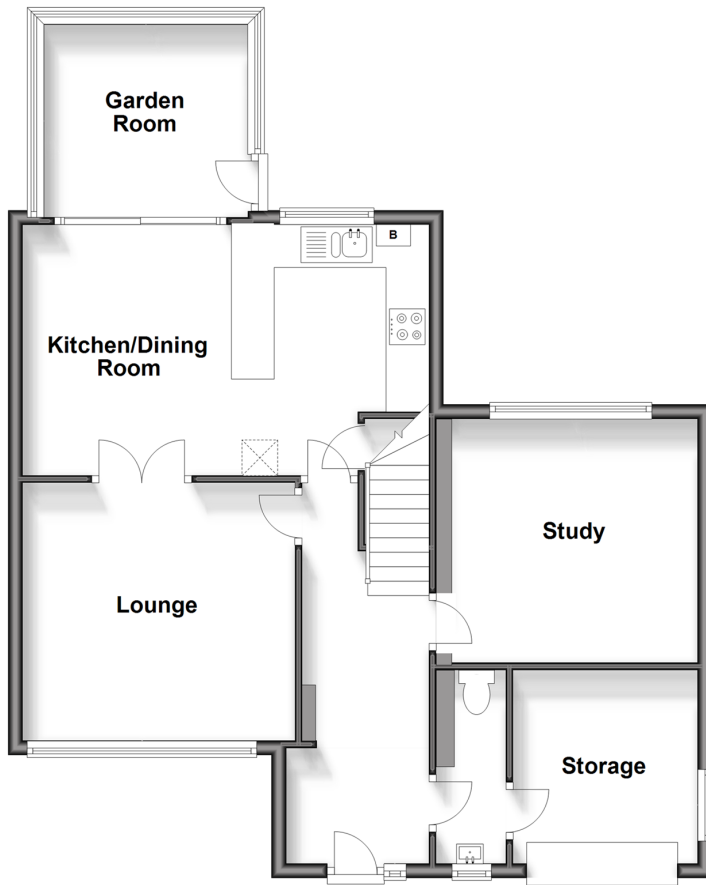
OVER 60?

Secure this property
for up to **59% less!**

cubitt&west
Helping you move forwards

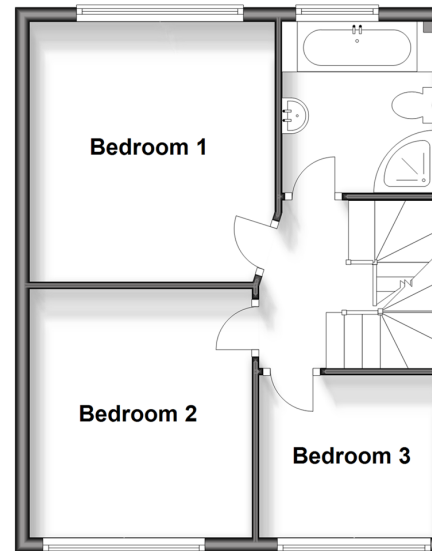
Ground Floor

Approx. 76.0 sq. metres (818.1 sq. feet)



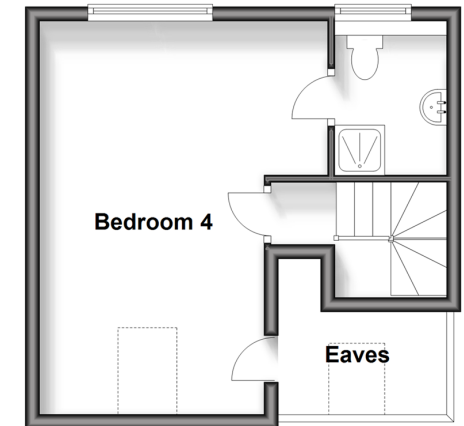
First Floor

Approx. 41.7 sq. metres (449.0 sq. feet)



Second Floor

Approx. 26.5 sq. metres (284.9 sq. feet)



Accommodation

GROUND FLOOR

Entrance Hallway

Cloakroom

Lounge: 12'6 x 11'11 (3.81m x 3.63m)

Kitchen/Dining Room: 18'8 x 11'6 (5.69m x 3.51m)

Study: 11'5 x 11'4 (3.48m x 3.46m)

Storage Area: 9'2 x 8'10 (2.80m x 2.69m)

Garden Room: 10'9 x 9'7 (3.28m x 2.92m)

FIRST FLOOR

Landing

Bedroom 1: 11'11 x 11'2 (3.63m x 3.41m)

Bedroom 2: 11'9 x 9'9 (3.58m x 2.97m)

Bedroom 3: 8'8 x 7'10 (2.64m x 2.39m)

Bathroom

SECOND FLOOR

Landing

Bedroom 4: 17'10 x 12'11 (5.44m x 3.94m)

En Suite Shower Room

OUTSIDE

Front & Rear Garden

Off Road Parking



Main features

- Extended home which is set over 3 floors making it ideal for a family
- One of the bedrooms features an en-suite
- A recently installed boiler
- Ideally located close to train station, town centre and Harlands Primary School
- Off road parking for multiple vehicles



Nearest Schools

Primary Schools: Harlands Primary 0.0 miles, St Wilfrid's CofE Primary, Haywards Heath 1.3 miles, Northlands Wood Community Primary 1.6 miles

Secondary Schools: Oathall Community College 2.0 miles,



Transport Information

Train Stations: Haywards Heath 0.9 miles, Balcombe 4.0 miles, Wivelsfield 4.7 miles



Address

Penland Road, Haywards Heath, West Sussex, RH16



Directions

For directions to this property please contact us.



cubitt&west
Helping you move forwards

Call Haywards Heath Branch 01444 411132 ■ cubittandwest.co.uk



- Legal advice should be taken to verify fixtures/fittings, planning, alterations and/or lease details
- Appliances & services are untested, dimensions are approximate and floor plans are not to scale
- Through a Homewise Home For Life Plan people aged 60+ can secure this property for up to 59% less, by purchasing a Lifetime Lease.



22705765/20240509/DD/DD