



Price
£425,000

Freehold

2x  2x  1x 

**Celadine Gardens,
Fallow Wood View,
Burgess Hill, West
Sussex, RH15**

cubitt&west
Helping you move forwards



Main features

- **Open-plan living and dining area & front-facing modern kitchen**
- **French doors to rear garden**
- **Sumptuous double bedrooms**
- **Roca sanitaryware to bathroom and ensuite for bedroom 1**
- **Bristan chrome brassware**
- **10-year warranty and insurance protection**
- *** Photos are from the show home**

Accommodation

GROUND FLOOR

Entrance Hallway

Cloakroom: 5'3 x 3'1 (1.60m x 0.94m)

Living/Dining Room: 16'1 at widest point x 13'0 (4.91m x 3.97m)

Kitchen: 12'2 x 5'10 (3.71m x 1.78m)

FIRST FLOOR

Landing

Bedroom 1: 13'3 at widest point x 13'0 (4.04m x 3.97m)

En-Suite Shower Room: 6'0 x 4'10 (1.83m x 1.47m)

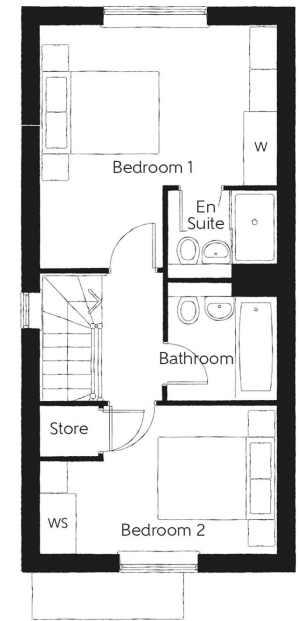
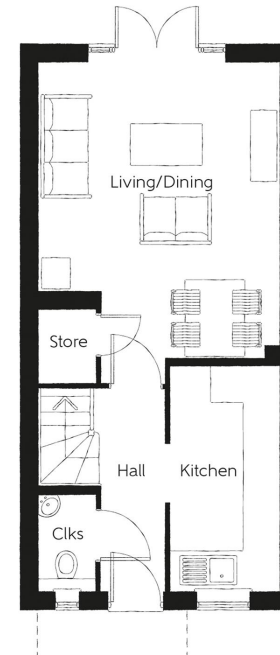
Bedroom 2: 13'1 x 8'0 at widest point (3.99m x 2.44m)

Bathroom: 6'3 x 6'1 (1.91m x 1.86m)

OUTSIDE

Front & Rear Garden

Off Road Parking



Call Haywards Heath - 01444 411132 ■ cubittandwest.co.uk

■ If buying to let, the energy rating will need to be improved to at least 'E' rating before you can let the property

■ Appliances & services are untested, dimensions are approximate and floor plans are not to scale

■ Legal advice should be taken to verify fixtures/fittings, planning, alterations and/or lease details



22705790/20240312/MG/DD