



Price

£650,000

Freehold

4x  3x  2x 

**Isaacs Avenue, Fallow
Wood View, Burgess
Hill, West Sussex, RH15**

cubitt&west
Helping you move forwards



Main features

- **Open-plan kitchen/dining area with utility room and French doors to rear garden**
- **Separate lounge for entertaining**
- **Sumptuous double bedrooms with built in wardrobes**
- **Ensuites to bedrooms 1 & 2**
- **Roca sanitaryware to bathroom and ensuites**
- *** Photos are from the show home**

Accommodation

GROUND FLOOR

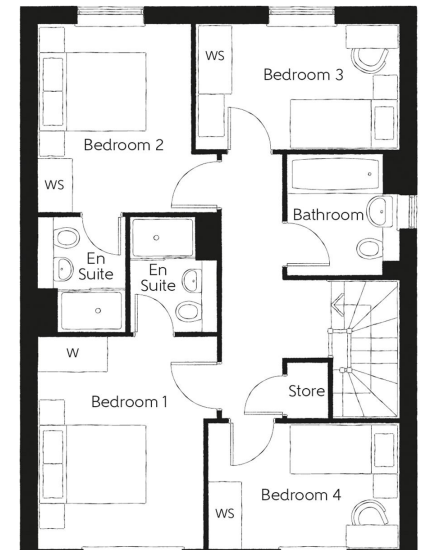
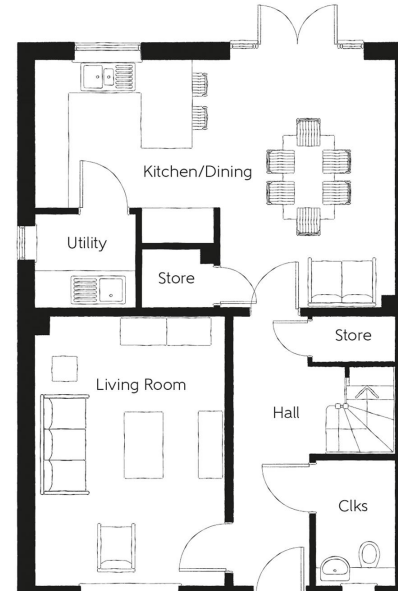
Entrance Hallway
 Kitchen/Dining Room: 21'0 maximum x 14'6 maximum (6.41m x 4.42m)
 Living Room: 15'7 x 11'1 (4.75m x 3.38m)
 Utility Room: 5'9 x 5'3 (1.75m x 1.60m)
 Cloakroom: 7'4 x 4'10 (2.24m x 1.47m)

FIRST FLOOR

Landing
 Bedroom 1: 12'4 x 10'5 maximum (3.76m x 3.18m)
 Bedroom 1 En-Suite: 6'9 x 5'1 (2.06m x 1.55m)
 Bedroom 2: 11'0 x 8'11 (3.36m x 2.72m)
 Bedroom 2 En-Suite: 6'9 x 5'1 (2.06m x 1.55m)
 Bedroom 3: 11'9 x 7'4 (3.58m x 2.24m)
 Bedroom 4: 11'1 x 7'3 (3.38m x 2.21m)
 Bathroom: 7'0 x 6'6 (2.14m x 1.98m)

OUTSIDE

Garage & Off Road Parking
 Front & Rear Garden



Call Haywards Heath - 01444 411132 ■ cubittandwest.co.uk

- If buying to let, the energy rating will need to be improved to at least 'E' rating before you can let the property
- Appliances & services are untested, dimensions are approximate and floor plans are not to scale

■ Legal advice should be taken to verify fixtures/fittings, planning, alterations and/or lease details

