



**Price**

**£550,000**

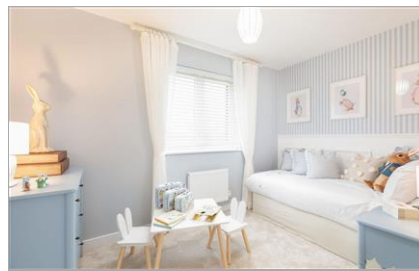
**Freehold**

3x  2x  2x 

Isaacs Avenue, Fallow  
Wood View, Burgess  
Hill, West Sussex, RH15

**cubitt&west**  
Helping you move forwards





## Main features

- **Open-plan kitchen/living/dining area ideal for modern living**
- **Sumptuous double bedrooms with ensuite to bedroom 1**
- **Roca sanitaryware to bathroom and ensuite**
- **Bristan chrome brassware**
- **10-year warranty and insurance protection**
- **\*Photos are from the show home**

## Accommodation

### GROUND FLOOR

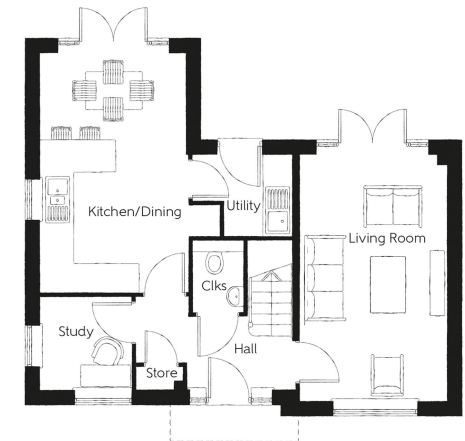
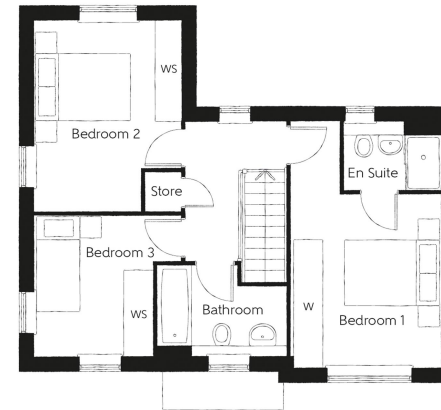
Entrance Hallway  
 Cloakroom: 4'11 x 3'5 (1.50m x 1.04m)  
 Living Room: 16'6 maximum x 10'0 maximum (5.03m x 3.05m)  
 Kitchen/Dining Room: 16'3 x 9'11 (4.96m x 3.02m)  
 Utility Room: 6'10 maximum x 5'5 maximum (2.08m x 1.65m)  
 Study: 6'3 x 6'1 (1.91m x 1.86m)

### FIRST FLOOR

Landing  
 Bedroom 1: 16'8 maximum x 10'1 maximum (5.08m x 3.08m)  
 En-Suite Shower Room: 6'7 x 4'7 (2.01m x 1.40m)  
 Bedroom 2: 13'0 maximum x 9'11 maximum (3.97m x 3.02m)  
 Bedroom 3: 10'0 maximum x 9'8 (3.05m x 2.95m)  
 Bathroom: 8'10 maximum x 6'2 maximum (2.69m x 1.88m)

### OUTSIDE

Garage & Off Road Parking  
 Front & Rear Garden



**Call Haywards Heath - 01444 411132 ■ [cubittandwest.co.uk](http://cubittandwest.co.uk)**

■ If buying to let, the energy rating will need to be improved to at least 'E' rating before you can let the property

■ Appliances & services are untested, dimensions are approximate and floor plans are not to scale

■ Legal advice should be taken to verify fixtures/fittings, planning, alterations and/or lease details



22705793/20240312/MG/DD