



Price

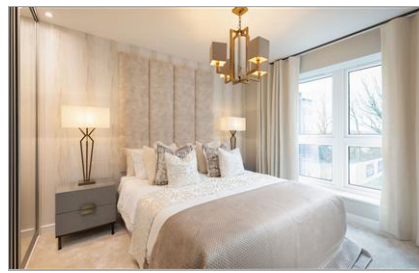
£595,000

Freehold

4x  2x  2x 

**Isaacs Avenue, Fallow
Wood View, Burgess
Hill, West Sussex, RH15**

cubitt&west
Helping you move forwards



Main features

- **Open-plan kitchen/dining/family area ideal for modern living**
- **Separate lounge for entertaining**
- **Sumptuous double bedrooms with ensuite to bedroom 1**
- **Roca sanitaryware to bathroom and ensuite**
- **Bristan chrome brassware**
- **10-year warranty and insurance protection**
- ***Photos are from the show home**

Accommodation

GROUND FLOOR

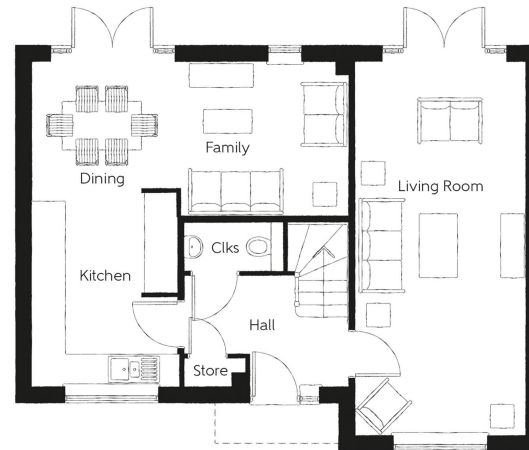
Entrance Hallway
 Cloakroom: 6'1 x 3'0 (1.86m x 0.92m)
 Living Room: 22'10 x 10'4 (6.96m x 3.15m)
 Kitchen: 11'10 x 8'10 (3.61m x 2.69m)
 Dining Room: 9'2 x 7'9 (2.80m x 2.36m)
 Family Room: 10'3 x 9'5 (3.13m x 2.87m)

FIRST FLOOR

Landing
 Bedroom 1: 14'3 maximum x 10'3 (4.35m x 3.13m)
 En-Suite Shower Room: 7'6 x 4'7 (2.29m x 1.40m)
 Bedroom 2: 11'9 maximum x 10'0 (3.58m x 3.05m)
 Bedroom 3: 9'8 x 8'4 (2.95m x 2.54m)
 Bedroom 4: 10'9 x 8'4 maximum (3.28m x 2.54m)
 Bathroom: 7'5 x 6'3 (2.26m x 1.91m)

OUTSIDE

Garage & Off Road Parking
 Front & Rear Garden



Call Haywards Heath - 01444 411132 ■ cubittandwest.co.uk

- If buying to let, the energy rating will need to be improved to at least 'E' rating before you can let the property
- Appliances & services are untested, dimensions are approximate and floor plans are not to scale

■ Legal advice should be taken to verify fixtures/fittings, planning, alterations and/or lease details



22705794/20240312/MG/DD