



Guide Price
£208,000

Leasehold

1x  1x  1x 

**Priory Mews, Haywards
Heath, West Sussex,
RH16**

OVER 60?

Secure this property
for up to **59% less!**

cubitt&west
Helping you move forwards



Main features

- No forward chain
- Open plan living
- Walking distance to town & train station
- Features a balcony
- The convenience of an allocated parking space
- Remainder of a long lease

Accommodation

SECOND FLOOR

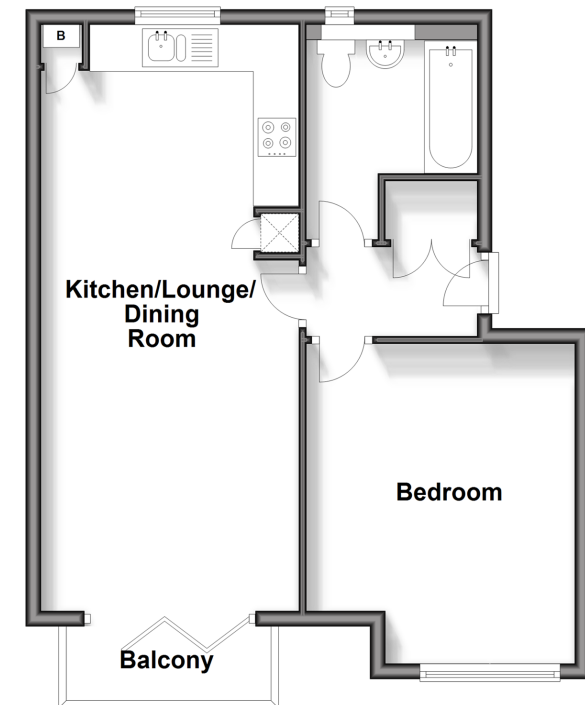
Hallway
 Kitchen/Lounge/Dining Room: 25'1 x 11'2 (7.65m x 3.41m)
 Bedroom : 13'3 x 11'7 (4.04m x 3.53m)
 Bathroom

OUTSIDE

Allocated Parking

Second Floor

Approx. 50.6 sq. metres (544.1 sq. feet)



Call Haywards Heath - 01444 411132 ■ cubittandwest.co.uk

■ Legal advice should be taken to verify fixtures/fittings, planning, alterations and/or lease details
 ■ Through a Homewise Home For Life Plan people aged 60+ can secure this property for up to 59% less, by purchasing a Lifetime Lease.

■ Appliances & services are untested, dimensions are approximate and floor plans are not to scale