



Price
£485,000

Freehold

3x  2x  1x 

**Elizabeth Road,
Haywards Heath, West
Sussex, RH16**

OVER 60?

Secure this property
for up to **59% less!**

cubitt&west
Helping you move forwards



Main features

- No forward chain
- Lots of upgrades including fully tiled bathrooms, large hand towel rails & shutters
- Boarded loft
- En-suite shower room
- Situated in a quiet location with the convenience of off road parking
- Secluded rear garden

Accommodation

GROUND FLOOR

Entrance Hallway
Cloakroom
Lounge: 18'10 x 11'11 (5.74m x 3.63m)
Kitchen/Dining Room: 15'7 x 11'9 (4.75m x 3.58m)

FIRST FLOOR

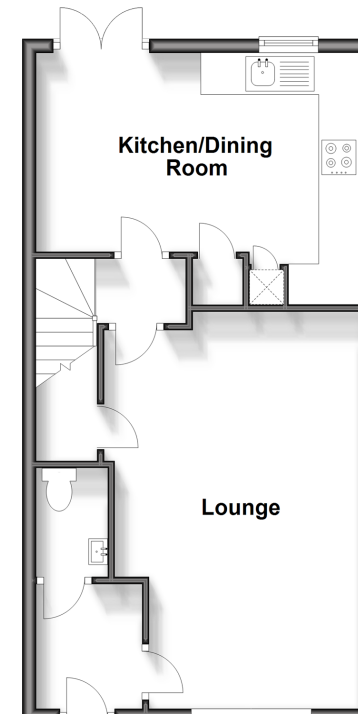
Landing
Bedroom 1: 12'5 x 11'3 up to fitted wardrobes (3.79m x 3.43m)
En-Suite Shower Room
Bedroom 2: 14'9 x 8'0 (4.50m x 2.44m)
Bedroom 3: 11'4 x 7'1 (3.46m x 2.16m)
Bathroom

OUTSIDE

Front & Rear Garden
Off Road Parking

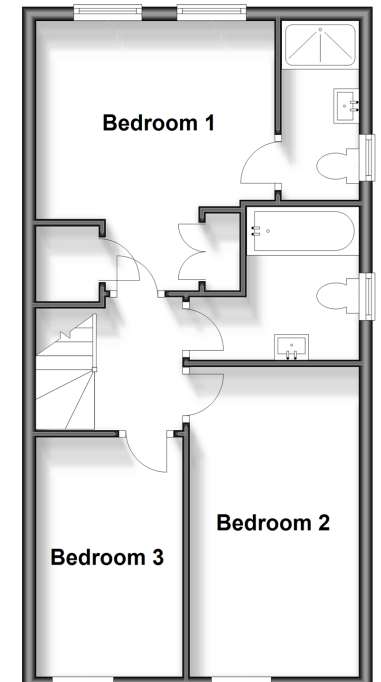
Ground Floor

Approx. 44.8 sq. metres (482.4 sq. feet)



First Floor

Approx. 44.8 sq. metres (482.4 sq. feet)



Call Haywards Heath - 01444 411132 ■ cubittandwest.co.uk

■ Legal advice should be taken to verify fixtures/fittings, planning, alterations and/or lease details
■ Through a Homewise Home For Life Plan people aged 60+ can secure this property for up to 59% less, by purchasing a Lifetime Lease.

■ Appliances & services are untested, dimensions are approximate and floor plans are not to scale



22705818/20240430/MG/DD