



Price
£575,000

Freehold

5x  2x  2x 

**Priory Road, Hassocks,
West Sussex, BN6**

OVER 60?

Secure this property
for up to **59% less!**

cubitt&west
Helping you move forwards



Main features

- **Extended semi-detached house**
- **Set over 3 Floors**
- **Secluded rear garden**
- **The convenience of a garage & off road parking**
- **Within walking distance to train station**

Accommodation

GROUND FLOOR

Entrance Hallway
Cloakroom
Lounge: 16'8 x 10'5 (5.08m x 3.18m)
Dining Room: (L-shaped) 16'6 x 11'4 (5.03m x 3.46m) plus 8'7 x 8'5 (2.62m x 2.57m)
Kitchen: 8'6 x 7'9 (2.59m x 2.36m)

FIRST FLOOR

Landing
Bedroom 1: 10'5 up to fitted wardrobes x 10'3 (3.18m x 3.13m)
Bedroom 2: 10'4 up to fitted wardrobes x 9'7 (3.15m x 2.92m)
Bedroom 3: 7'7 x 6'4 (2.31m x 1.93m)
Bathroom

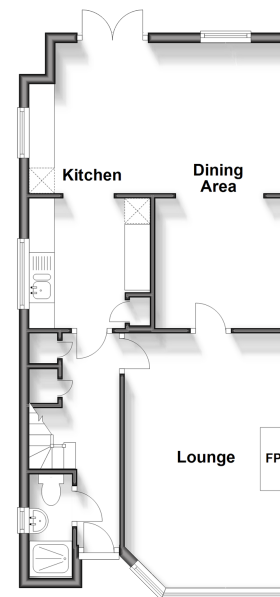
SECOND FLOOR

Landing
Bedroom 4: 16'2 x 7'0 (4.93m x 2.14m)
Bedroom 5: 13'7 up to fitted wardrobes x 9'6 (4.14m x 2.90m)
En-Suite

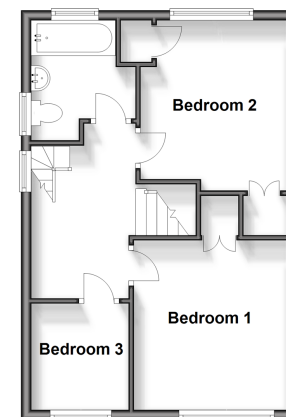
OUTSIDE

Front & Rear Garden
Garage: 16'3 x 8'0 (4.96m x 2.44m)
Off Road Parking

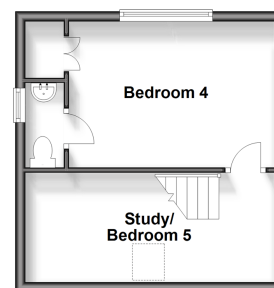
Ground Floor
Approx. 53.0 sq. metres (570.6 sq. feet)



First Floor
Approx. 39.2 sq. metres (421.7 sq. feet)



Second Floor
Approx. 25.5 sq. metres (274.3 sq. feet)



Call Haywards Heath - 01444 411132 ■ cubittandwest.co.uk

■ Legal advice should be taken to verify fixtures/fittings, planning, alterations and/or lease details
■ Through a Homewise Home For Life Plan people aged 60+ can secure this property for up to 59% less, by purchasing a Lifetime Lease.

■ Appliances & services are untested, dimensions are approximate and floor plans are not to scale



22705822/20240516/DD/DD