



Price

£850,000

Freehold

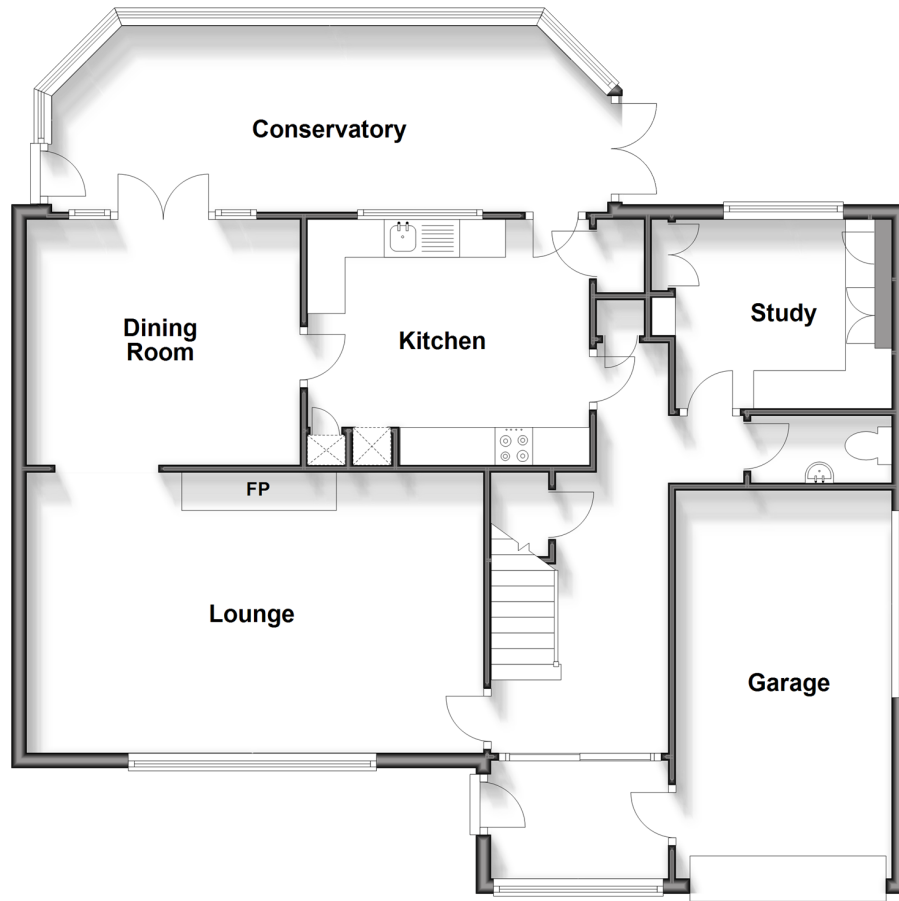
4x  2x  4x 

**Weald Rise, Haywards
Heath, West Sussex,
RH16**

cubitt&west
Helping you move forwards

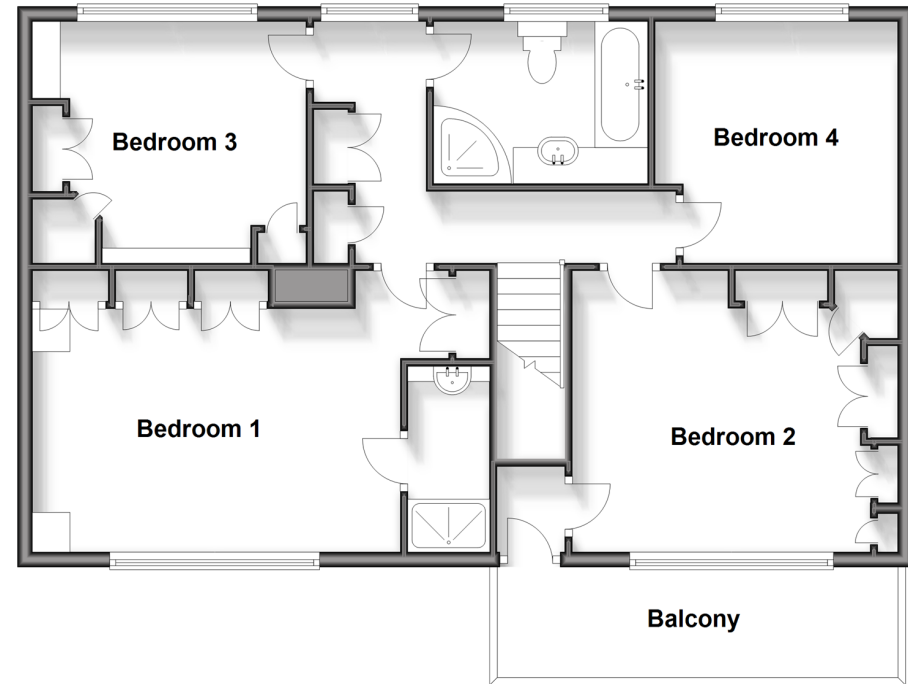
Ground Floor

Approx. 107.4 sq. metres (1156.6 sq. feet)



First Floor

Approx. 80.6 sq. metres (867.6 sq. feet)



Accommodation

GROUND FLOOR

Porch
Entrance Hallway
Cloakroom
Lounge: 20'1 x 13'0 (6.13m x 3.97m)
Dining Room: 11'11 x 10'7 (3.63m x 3.23m)
Kitchen: 12'7 x 10'8 (3.84m x 3.25m)
Study: 10'7 x 7'10 (3.23m x 2.39m)
Conservatory: 24'3 x 8'2 (7.40m x 2.49m)

FIRST FLOOR

Landing
Bedroom 1: 18'1 x 12'3 up to fitted wardrobes (5.52m x 3.74m)
En-Suite Shower Room
Bedroom 2: 14'0 x 12'4 up to fitted wardrobes (4.27m x 3.76m)
Bedroom 3: 12'0 x 11'4 up to fitted wardrobes (3.66m x 3.46m)

Bedroom 4: 10'7 x 10'6 (3.23m x 3.20m)

Bathroom

OUTSIDE

Balcony
Garage: 17'10 x 9'1 (5.44m x 2.77m)
Off Road Parking
Front & Rear Garden



Main features

- Current seller has lived here for 32 years
- The perfect family home located in a quiet cul-de-sac
- All bedrooms are doubles
- Balcony
- Secluded rear garden
- Integral garage & off road parking
- Large bathroom with jacuzzi bath & separate shower cubicle



Nearest Schools

Primary Schools: St Wilfrid's CofE Primary, Haywards Heath 0.9 miles, St Joseph's Catholic Primary, Haywards Heath 0.9 miles, Heyworth Primary 1.1 miles

Secondary Schools: Oathall Community College 1.6 miles,



Transport Information

Train Stations: Haywards Heath 1.4 miles, Wivelsfield 1.5 miles, Burgess Hill 2.4 miles



Address

Weald Rise, Haywards Heath, West Sussex, RH16



Directions

For directions to this property please contact us.



cubitt&west
Helping you move forwards

Call Haywards Heath Branch 01444 411132 ■ cubittandwest.co.uk



■ Legal advice should be taken to verify fixtures/fittings, planning, alterations and/or lease details ■ Appliances & services are untested, dimensions are approximate and floor plans are not to scale



22705828/20240427/DD/DD