

OVER 60?

Secure this property
for up to **59% less!**



Price
£650,000
Freehold

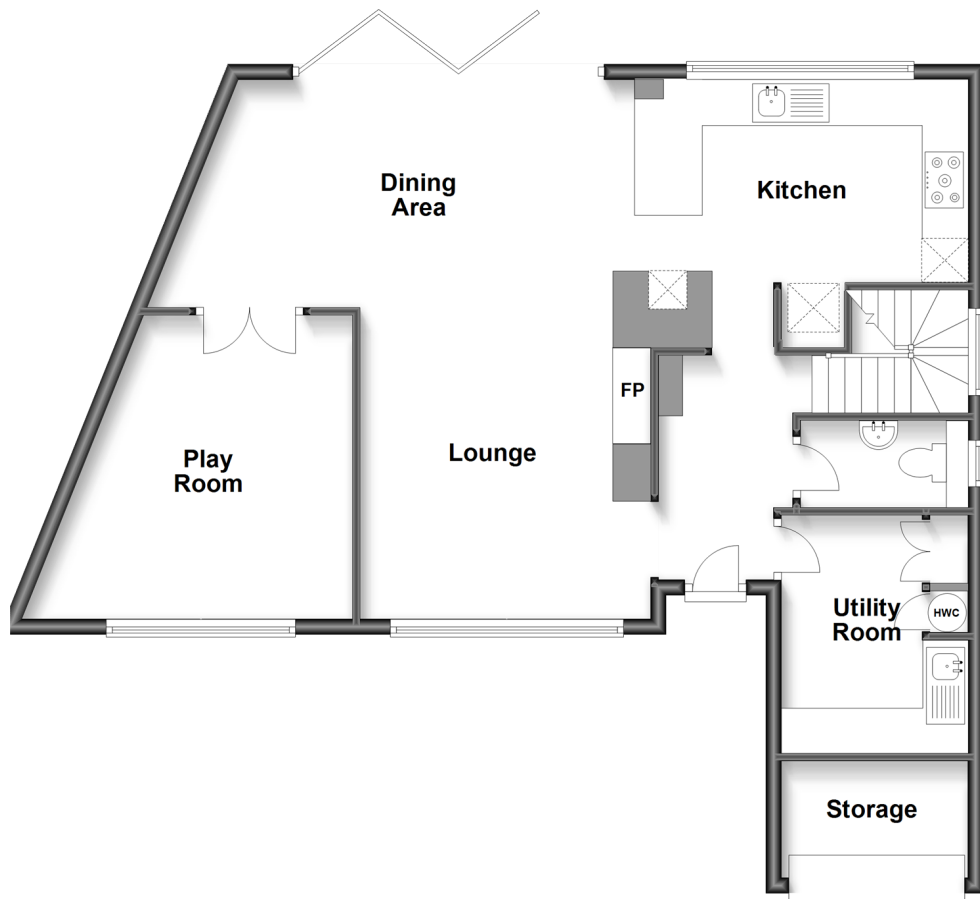
4x  3x  2x 

Newick Drive, Newick, East Sussex, BN8

cubitt & west
Helping you move forwards

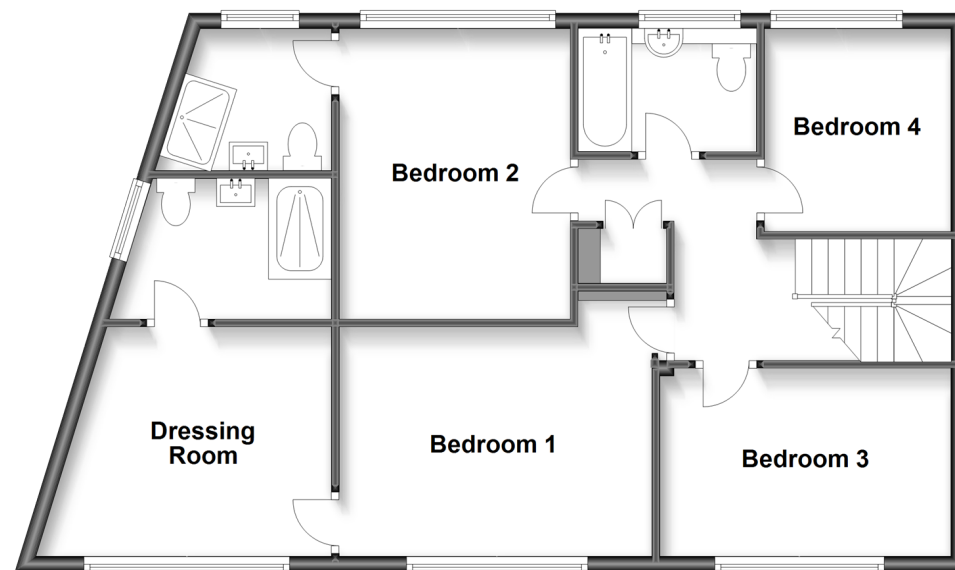
Ground Floor

Approx. 84.3 sq. metres (907.5 sq. feet)



First Floor

Approx. 75.2 sq. metres (809.3 sq. feet)



Accommodation

GROUND FLOOR

Hallway
Cloakroom
Utility Room
Kitchen: 13'9 x 8'8 (4.19m x 2.64m)
Lounge: 12'8 x 11'1 up to chimney (3.86m x 3.38m)
Dining Area: 20'0 x 9'10 (6.10m x 3.00m)
Play Room: 12'8 x 12'0 (3.86m x 3.66m)

FIRST FLOOR

Landing
Bedroom 1: 13'4 x 10'5 (4.07m x 3.18m)
Dressing Room: 10'9 x 9'3 (3.28m x 2.82m)
Ensuite Shower Room
Bedroom 2: 12'5 x 9'10 (3.79m x 3.00m)
Ensuite Shower Room
Bedroom 3: 12'5 x 8'1 (3.79m x 2.47m)
Bedroom 4: 8'10 x 7'10 (2.69m x 2.39m)
Bathroom

OUTSIDE

Rear Garden
Driveway
Storage : 9'6 x 6'6 (2.90m x 1.98m)



Main features

- Immaculately presented family home
- Substantial open-plan living area with under-floor heating
- Bi-fold doors leading into the sunny rear garden
- Walk-thru dressing room and 2 stunning en-suite shower rooms
- Remote control blinds & 'intelligent heating'



Nearest Schools

Primary Schools: Newick C of E Primary 0.1 miles, Chailey St Peter's C of E Primary 1.6 miles, Fletching C of E Primary 1.6 miles. Secondary Schools: Chailey Heritage School 1.8 miles, Chailey School 2.8 miles, Uckfield Community Technology College 3.9 miles



Transport Information

Train Stations: Plumpton 4.3 miles, Cooksbridge 4.9 miles, Lewes 7.0 miles



Address

Newick Drive, Newick, East Sussex, BN8



Directions

For directions to this property please contact us.



cubitt&west
Helping you move forwards

Call Uckfield Branch 01825 768915 ■ cubittandwest.co.uk



- Legal advice should be taken to verify fixtures/fittings, planning, alterations and/or lease details
- Appliances & services are untested, dimensions are approximate and floor plans are not to scale
- Through a Homewise Home For Life Plan people aged 60+ can secure this property for up to 59% less, by purchasing a Lifetime Lease.



22822371/20231007/JL/DM