

**OVER 60?**

Secure this property  
for up to **59% less!**



**Price**

**£675,000**

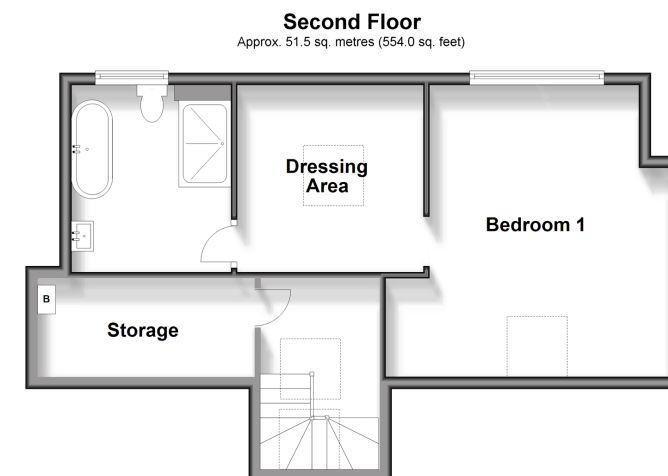
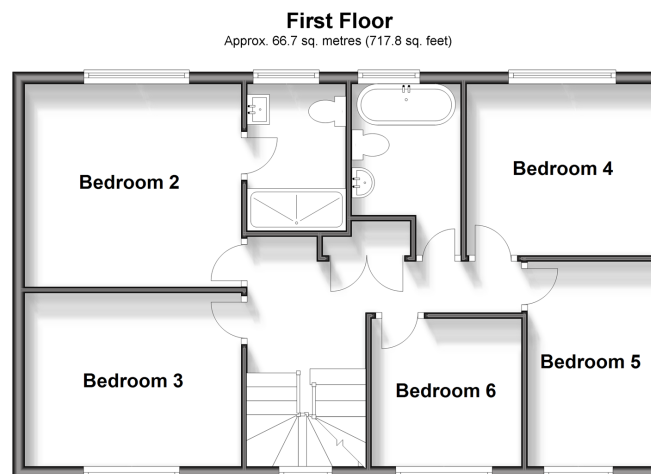
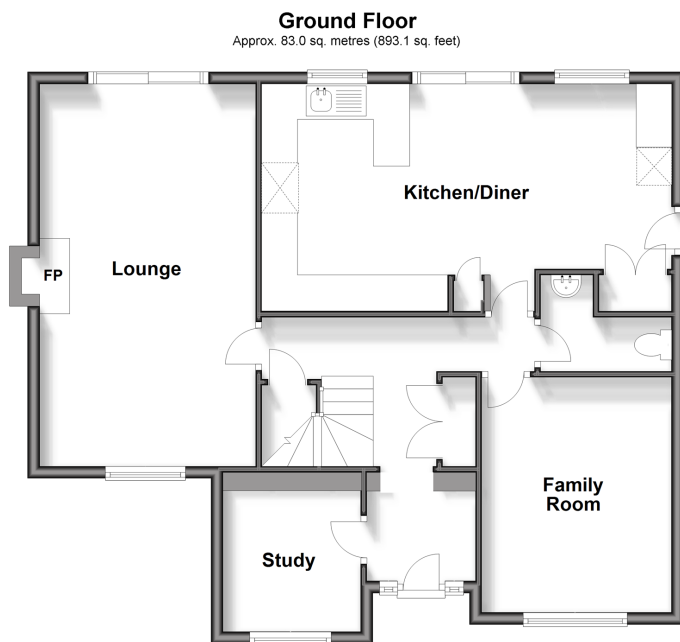
**Freehold**

6x  3x  1x 

Pipers Field, Ridgewood, Uckfield, East  
Sussex, TN22

**cubitt&west**  
Helping you move forwards





## Accommodation

### GROUND FLOOR

Hallway  
Study: 7'9 x 7'8 (2.36m x 2.34m)  
Family Room: 12'8 x 10'4 (3.86m x 3.15m)  
Lounge: 20'9 x 11'9 (6.33m x 3.58m)  
Kitchen/Diner: 22'7 x 11'0 (6.89m x 3.36m)

### FIRST FLOOR

Landing  
Bedroom 2: 11'10 x 11'0 (3.61m x 3.36m)  
Ensuite Shower Room  
Bedroom 3: 11'11 x 9'5 (3.63m x 2.87m)  
Bedroom 4: 10'6 x 9'5 (3.20m x 2.87m)  
Bedroom 5: 11'0 x 7'3 (3.36m x 2.21m)  
Bedroom 6: 8'2 x 8'0 (2.49m x 2.44m)  
Bathroom

### SECOND FLOOR

Landing  
Bedroom 1: 16'6 x 13'3 (5.03m x 4.04m)  
Ensuite Bathroom  
Dressing Area: 10'2 x 7'10 into cupboard (3.10m x 2.39m)  
Storage

### OUTSIDE

Front & Rear Gardens  
Double Garage : 16'7 x 16'2 (5.06m x 4.93m)  
Driveway



## Main features

- A remarkable, extended family home
- Large rear garden, double garage & parking
- Impressive main bedroom with ensuite bathroom & dressing area
- Further ensuite shower room & separate bathroom
- Covered patio/entertainment area with gas fireplace
- Elevated views & close to Millennium Green



### Nearest Schools

Primary Schools: St Philip's Catholic Primary 0.7 miles, Harlands Primary 0.8 miles, Framfield C of E Primary 1.2 miles  
Secondary Schools: Uckfield Community Technology College 1.7 miles, Ringmer Community College 4.5 miles



### Transport Information

Train Stations: Plumpton 7.3 miles, Lewes 8.1 miles, Berwick 8.3 miles



### Address

Pipers Field, Ridgewood, Uckfield, East Sussex, TN22



### Directions

For directions to this property please contact us.





**cubitt&west**  
Helping you move forwards

Call Uckfield Branch 01825 768915 ■ [cubittandwest.co.uk](https://cubittandwest.co.uk)



■ Legal advice should be taken to verify fixtures/fittings, planning, alterations and/or lease details ■ Appliances & services are untested, dimensions are approximate and floor plans are not to scale  
■ Through a Homewise Home For Life Plan people aged 60+ can secure this property for up to 59% less, by purchasing a Lifetime Lease.



22823565/20231201/JL/RSE