



Guide Price
£600,000
Freehold

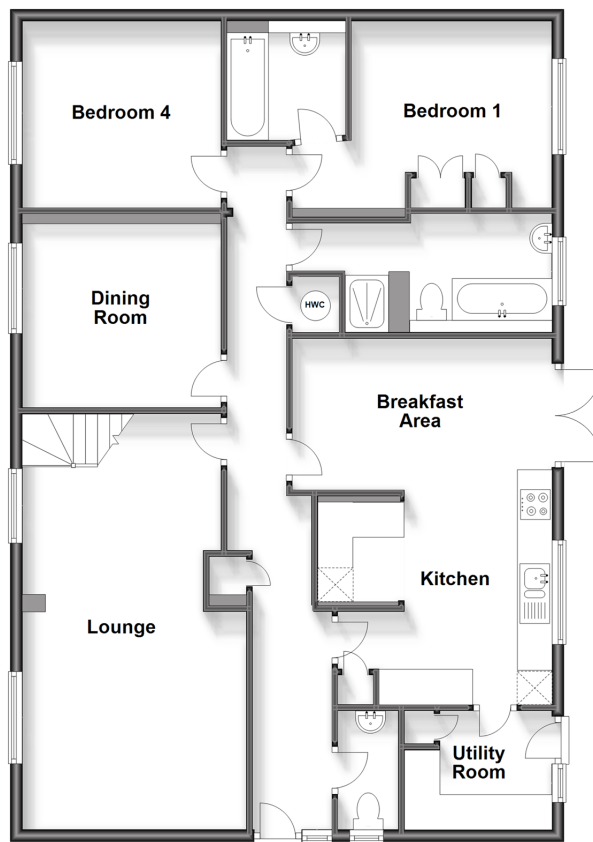
4x  3x  2x 

Horney Common, Uckfield, East Sussex,
TN22

cubitt&west
Helping you move forwards

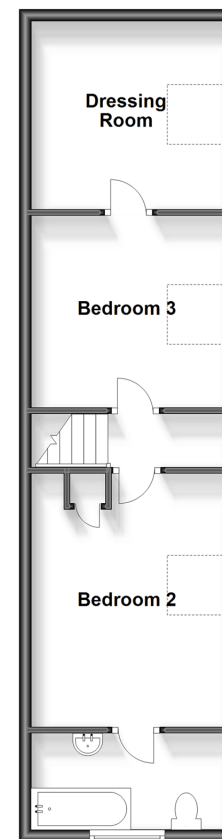
Ground Floor

Approx. 121.3 sq. metres (1306.0 sq. feet)



First Floor

Approx. 45.0 sq. metres (484.9 sq. feet)



Accommodation

GROUND FLOOR

Hallway

Cloakroom

Kitchen: 20'10 x 14'3 (6.35m x 4.35m)

Utility Room

Lounge: 20'10 x 12'1 (6.35m x 3.69m)

Dining Room: 11'1 x 10'2 (3.38m x 3.10m)

Bedroom 1: 11'1 x 10'2 (3.38m x 3.10m)

Ensuite Bathroom

Bedroom 4: 10'11 x 10'2 (3.33m x 3.10m)

Bathroom

FIRST FLOOR

Landing

Bedroom 2: 13'10 x 10'9 (4.22m x 3.28m)

Ensuite Bathroom

Bedroom 3: 10'10 x 10'4 (3.30m x 3.15m)

Dressing Room: 10'10 x 10'1 (3.30m x 3.08m)

OUTSIDE

Front, Side & Rear Gardens

Garage & Off-Road Parking



Main features

- Large chalet style property on the edge of Ashdown Forest
- 2 ensuite bathrooms and a separate family bathroom
- Dressing room, utility room & cloakroom
- Private garden and parking for several cars
- Flexible accommodation with rural views



Nearest Schools

Primary Schools: Nutley C of E Primary 1.2 miles, Bonners CofE School 1.8 miles, Fletching C of E Primary 2.2 miles

Secondary Schools: Uckfield Community Technology College 3.2 miles, Grove Park School 4.6 miles



Transport Information

Train Stations: Buxted 3.3 miles, Uckfield 3.6 miles, Crowborough 5.5 miles



Address

Horney Common, Uckfield, East Sussex, TN22



Directions

For directions to this property please contact us.



cubitt&west
Helping you move forwards

Call Uckfield Branch 01825 768915 ■ cubittandwest.co.uk



■ Legal advice should be taken to verify fixtures/fittings, planning, alterations and/or lease details ■ Appliances & services are untested, dimensions are approximate and floor plans are not to scale



22823750/20240518/JS/RSE