



Price

£115,000

Leasehold

1x  1x  1x 

**Portman Court, Grange
Road, Uckfield, East
Sussex, TN22**



Video Tour available

cubitt&west
Helping you move forwards



Main features

- Ground floor assisted living apartment for the over 60's
- Direct access onto communal patio & grounds
- 4-piece bathroom suite/wet room
- Resident/visitor parking
- Excellent communal facilities
- Offered with no chain

Accommodation

GROUND FLOOR

Hallway

Lounge/Dining Room: 25'4 x 10'7
(7.73m x 3.23m)

Kitchen: 9'2 x 7'7 (2.80m x 2.31m)

Bedroom 1: 15'4 x 9'11 (4.68m x 3.02m)

Bathroom

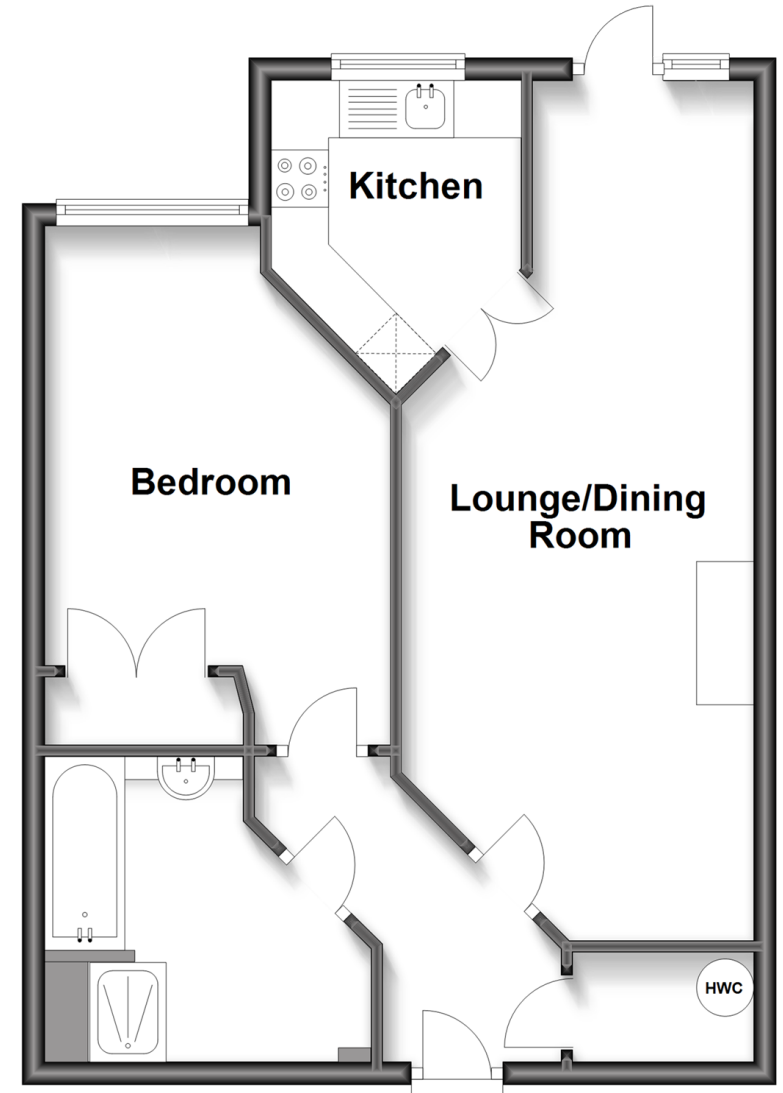
OUTSIDE

Communal Gardens

Off-Road Parking

Ground Floor

Approx. 50.9 sq. metres (548.2 sq. feet)



Call Uckfield - 01825 768915 ■ cubittandwest.co.uk

- Legal advice should be taken to verify fixtures/fitings, planning, alterations and/or lease details
- Appliances & services are untested, dimensions are approximate and floor plans are not to scale