



**Guide Price**

**£130,000**

**Leasehold**

1x  1x  1x 

**Shaftesbury Court,  
London Road, Uckfield,  
East Sussex, TN22**



Video Tour available

**cubitt&west**  
Helping you move forwards





## Main features

- Ground floor retirement apartment for the over 60s
- Immaculate interior with updated kitchen
- Modern walk-in shower room with matching suite
- Communal gardens & facilities
- Offered with no onward chain

## Accommodation

### GROUND FLOOR

Hallway

Lounge/Dining Area: 17'8 x 13'1  
(5.39m x 3.99m)

Kitchen: 8'3 x 5'11 (2.52m x 1.80m)

Bedroom : 14'2 x 8'1 (4.32m x 2.47m)

Shower Room

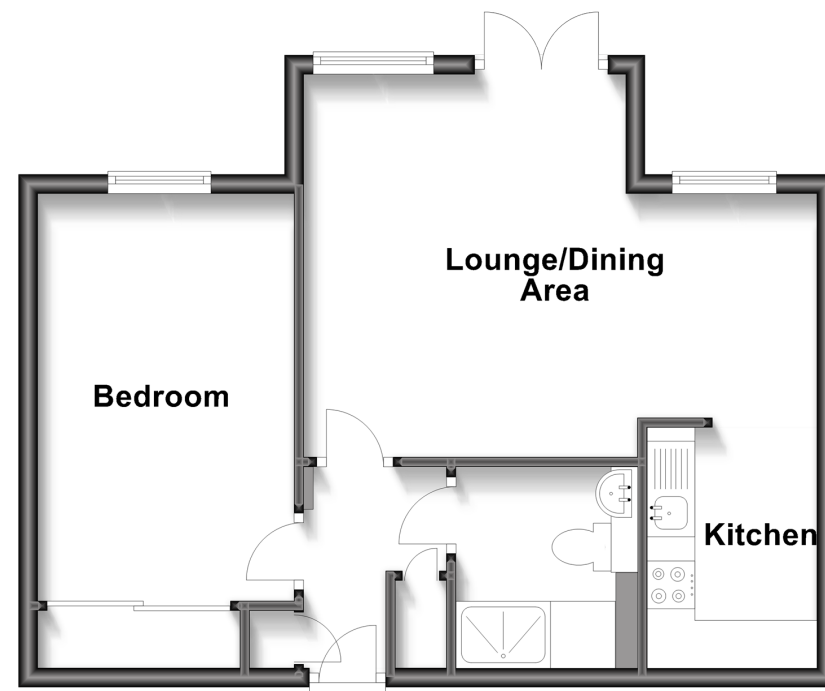
### OUTSIDE

Communal Gardens

Off-Road Parking

## Ground Floor

Approx. 44.9 sq. metres (482.9 sq. feet)



**Call Uckfield - 01825 768915 ■ [cubittandwest.co.uk](http://cubittandwest.co.uk)**

- Legal advice should be taken to verify fixtures/fittings, planning, alterations and/or lease details
- Appliances & services are untested, dimensions are approximate and floor plans are not to scale



22823798/20230804/JL/RSE