



Guide Price
£600,000

Freehold

4x  1x  3x 

**New Road, Uckfield,
East Sussex, TN22**

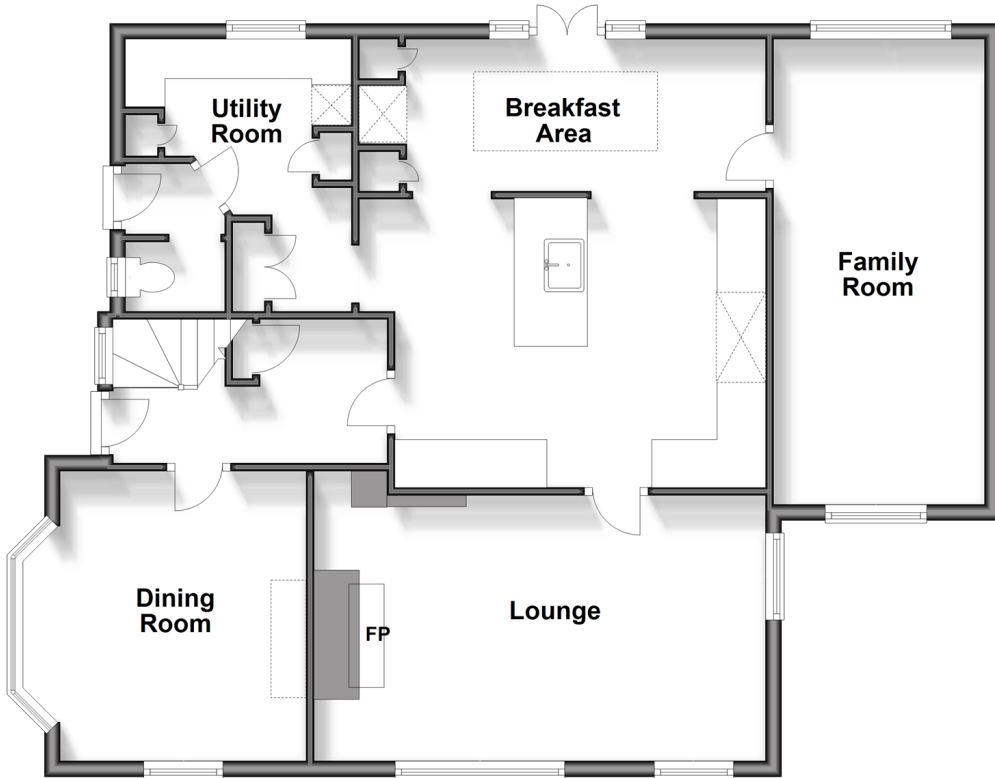
OVER 60?

Secure this property
for up to **59% less!**

cubitt & west
Helping you move forwards

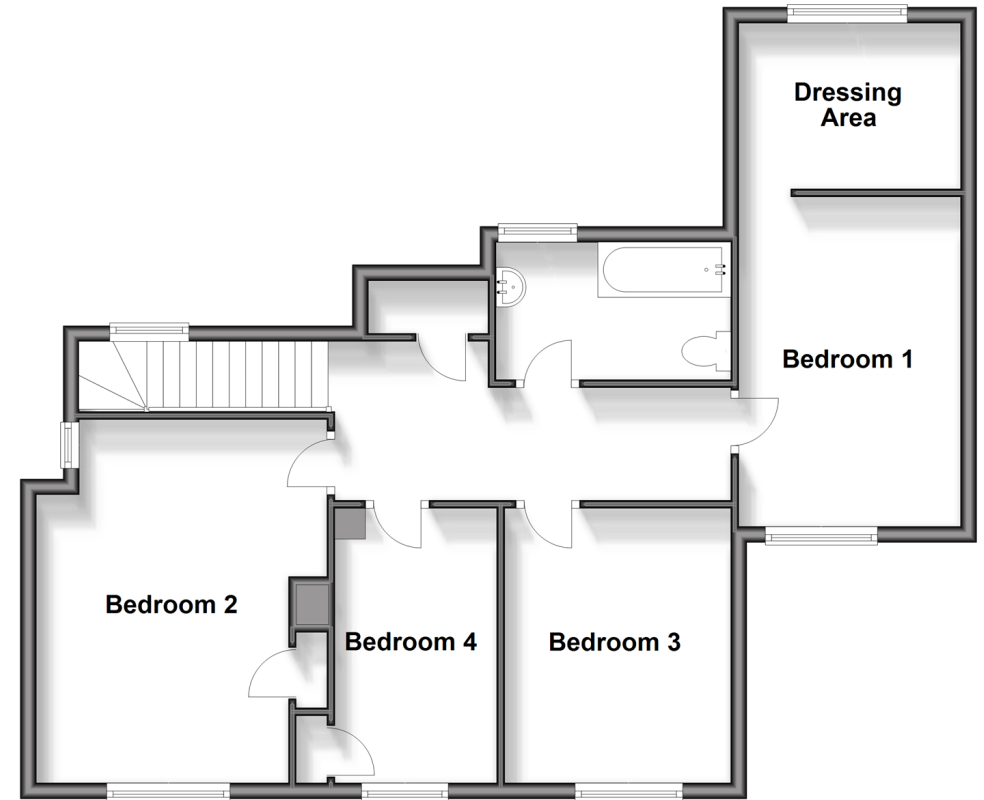
Split Level Ground Floor

Approx. 93.8 sq. metres (1009.2 sq. feet)



First Floor

Approx. 71.0 sq. metres (763.8 sq. feet)



Accommodation

GROUND FLOOR

Hallway

Dining Room: 12'10 maximum x 12'0 (3.91m x 3.66m)

Kitchen/Breakfast Area: 19'0 x 17'2 (5.80m x 5.24m)

Utility Room: 11'3 x 9'4 (3.43m x 2.85m)

Separate Toilet

Family Room: 19'0 x 11'7 (5.80m x 3.53m)

Lounge: 18'6 x 11'1 (5.64m x 3.38m)

FIRST FLOOR

Landing

Bedroom 1: 13'8 x 9'3 (4.17m x 2.82m)

Dressing Area: 9'3 x 6'11 (2.82m x 2.11m)

Bedroom 2: 15'1 x 12'1 (4.60m x 3.69m)

Bedroom 3: 11'10 x 9'8 (3.61m x 2.95m)

Bedroom 4: 11'10 x 8'9 (3.61m x 2.67m)

Bathroom

OUTSIDE

Front & Rear Gardens

Driveway



Main features

- Desirable Ridgewood location
- Overlooking a protected park area with woodland walks
- Converted garage creating extra living space
- Large open-plan kitchen overlooking the garden
- Offered with no onward chain



Nearest Schools

Primary Schools: Harlands Primary 0.9 miles, St Philip's Catholic Primary 0.9 miles, Little Horsted C of E Primary 1.0 miles
Secondary Schools: Uckfield Community Technology College 1.8 miles, Ringmer Community College 6.4 miles



Transport Information

Train Stations: Uckfield 1.0 miles, Buxted 5.6 miles, Plumpton 7.3 miles



Address

New Road, Uckfield, East Sussex, TN22



Directions

For directions to this property please contact us.



cubitt&west
Helping you move forwards

Call Uckfield Branch 01825 768915 ■ cubittandwest.co.uk



■ Legal advice should be taken to verify fixtures/fittings, planning, alterations and/or lease details ■ Appliances & services are untested, dimensions are approximate and floor plans are not to scale
■ Through a Homewise Home For Life Plan people aged 60+ can secure this property for up to 59% less, by purchasing a Lifetime Lease.



22823867/20240501/JL/RSE