



Guide Price
£350,000

Freehold

2x  1x  1x 

South Street, East
Hoathly, East Sussex,
BN8

OVER 60?

Secure this property
for up to **59% less!**

cubitt&west
Helping you move forwards



Main features

- Recently refurbished, charming village home with feature fireplace
- Pretty cottage gardens to front & rear
- Former garage currently being used as a gym/office
- Close to village shop with Post Office, pub, hairdressers & cafe
- Offered with no onward chain

Accommodation

GROUND FLOOR

Lounge: 16'1 x 11'10 (4.91m x 3.61m)

Dining Area: 10'0 x 8'0 (3.05m x 2.44m)

Kitchen: 10'1 x 5'3 (3.08m x 1.60m)

FIRST FLOOR

Landing

Bedroom 1: 14'11 x 9'3 (4.55m x 2.82m)

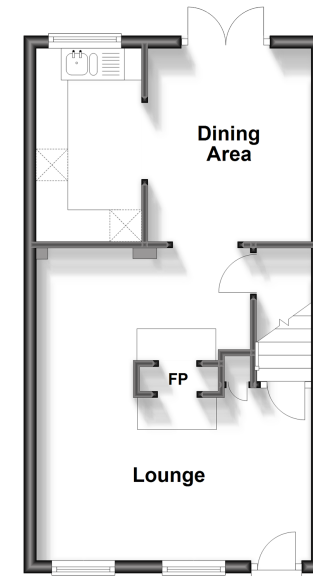
Bedroom 2: 10'10 x 8'7 (3.30m x 2.62m)

Bathroom

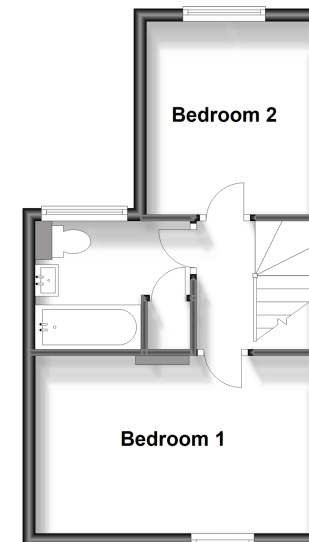
OUTSIDE

Front & Rear Gardens
Workshop/Outbuilding

Ground Floor
Approx. 36.0 sq. metres (387.5 sq. feet)



First Floor
Approx. 31.1 sq. metres (334.9 sq. feet)



Call Uckfield - 01825 768915 ■ cubittandwest.co.uk

- Legal advice should be taken to verify fixtures/fittings, planning, alterations and/or lease details
- Appliances & services are untested, dimensions are approximate and floor plans are not to scale
- Through a Homewise Home For Life Plan people aged 60+ can secure this property for up to 59% less, by purchasing a Lifetime Lease.



22823886/20231220/JS/RSE