



Price
£245,000

2x  2x  1x 

**Barley Mow Park,
Eastbourne Road,
Ridgewood, Uckfield,
East Sussex, TN22**

cubitt&west
Helping you move forwards



Main features

- A beautifully presented home for the over 55s
- 2 shower rooms, one of which is ensuite
- Private wrap-around garden
- Off-road parking
- Offered with no onward chain
- Close to bus route into the town centre

Accommodation

GROUND FLOOR

Hallway

Lounge: 14'2 x 11'1 (4.32m x 3.38m)

Dining Area: 8'2 x 6'9 (2.49m x 2.06m)

Kitchen: 12'4 x 7'11 (3.76m x 2.41m)

Bedroom 1: 10'1 x 9'3 (3.08m x 2.82m)

Ensuite Shower Room

Bedroom 2: 10'0 x 9'5 (3.05m x 2.87m)

Bathroom

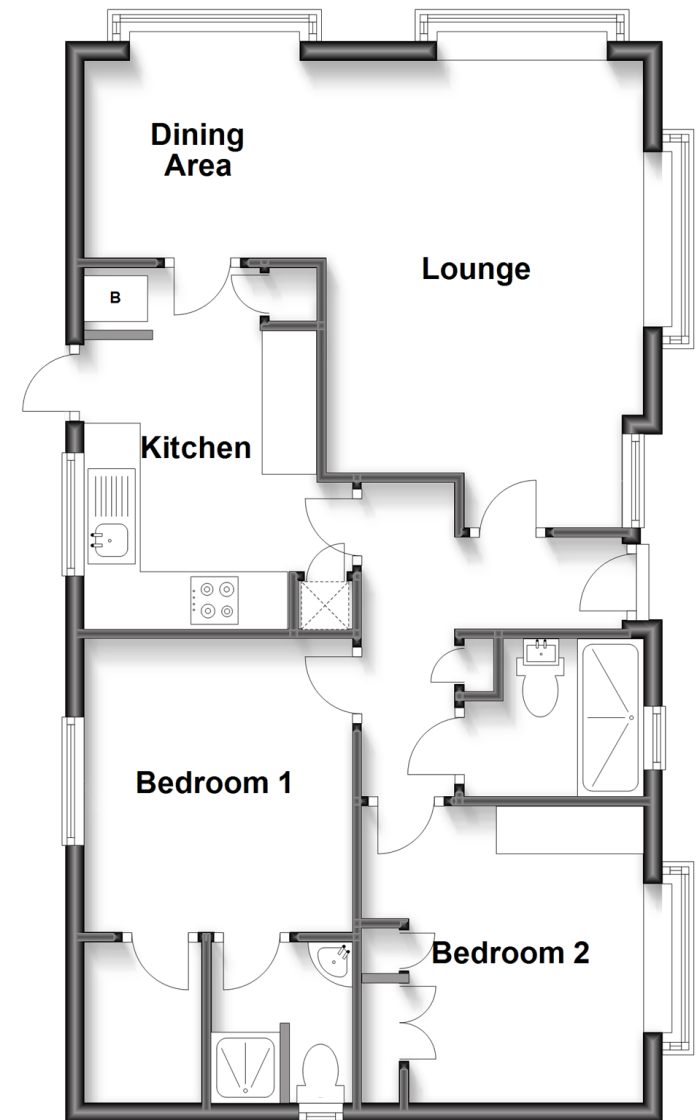
OUTSIDE

Patio Garden

Off-Road Parking

Ground Floor

Approx. 65.4 sq. metres (704.0 sq. feet)



Call Uckfield - 01825 768915 ■ cubittandwest.co.uk

- If buying to let, the energy rating will need to be improved to at least 'E' rating before you can let the property
- Legal advice should be taken to verify fixtures/fittings, planning, alterations and/or lease details
- Appliances & services are untested, dimensions are approximate and floor plans are not to scale



22823895/20230511/RSE/DM