



Price

£600,000

Freehold

4x  2x  1x 

Juziers Drive, East Hoathly, East Sussex,
BN8

cubitt&west
Helping you move forwards



Main features

- Immaculate detached family home with ensuite shower room, study & utility room
- Rural village location
- Close to the South Downs
- Garage and driveway
- Close to village pub, shop, and other amenities

Accommodation

GROUND FLOOR

Hallway
Cloakroom
Study: 6'9 x 6'1 (2.06m x 1.86m)
Lounge: 17'0 x 13'8 (5.19m x 4.17m)
Dining Area: 13'8 x 9'10 (4.17m x 3.00m)
Kitchen: 13'8 x 9'10 (4.17m x 3.00m)
Utility Room

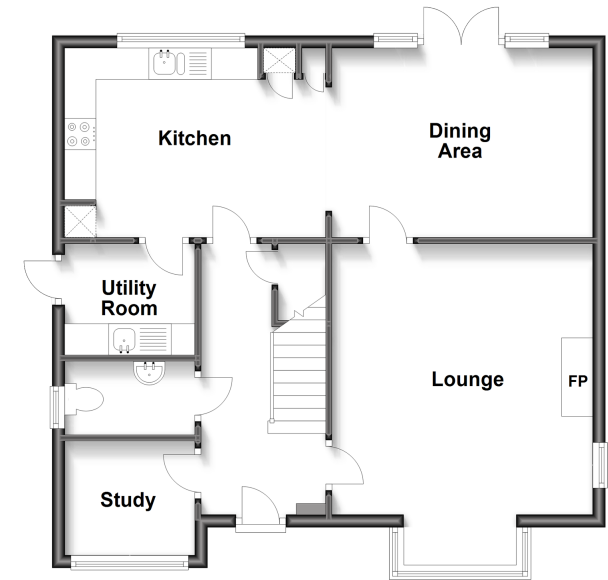
FIRST FLOOR

Landing
Bedroom 1: 13'8 x 9'11 (4.17m x 3.02m)
Ensuite Shower Room
Bedroom 2: 11'2 x 10'1 (3.41m x 3.08m)
Bedroom 3: 10'2 x 10'1 (3.10m x 3.08m)
Bedroom 4: 9'7 x 9'1 (2.92m x 2.77m)
Bathroom

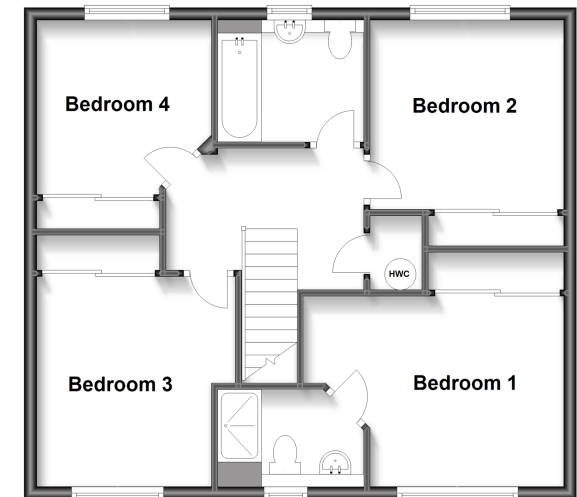
OUTSIDE

Front & Rear Gardens
Garage & Driveway

Ground Floor
Approx. 64.9 sq. metres (698.2 sq. feet)



First Floor
Approx. 62.4 sq. metres (671.9 sq. feet)



Call Uckfield - 01825 768915 ■ cubittandwest.co.uk

- Legal advice should be taken to verify fixtures/fittings, planning, alterations and/or lease details
- Appliances & services are untested, dimensions are approximate and floor plans are not to scale



22823912/20230503/JL/CA