



OVER 60?

Secure this property
for up to **59% less!**

Price

£900,000

Freehold

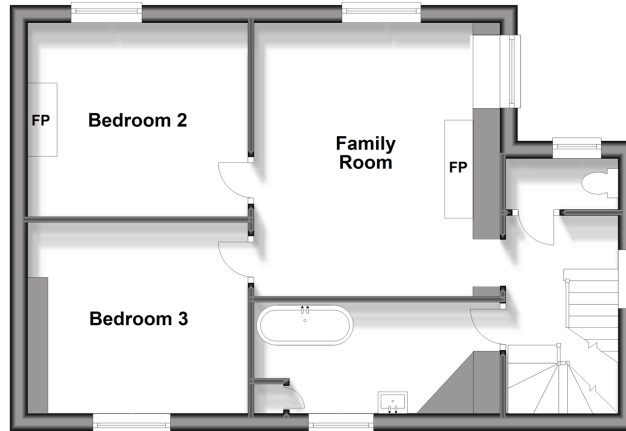
3x  2x  2x 

**The Stone House,
Oldlands Hall, Herons
Ghyll, East Sussex, TN22**

cubitt&west
Helping you move forwards

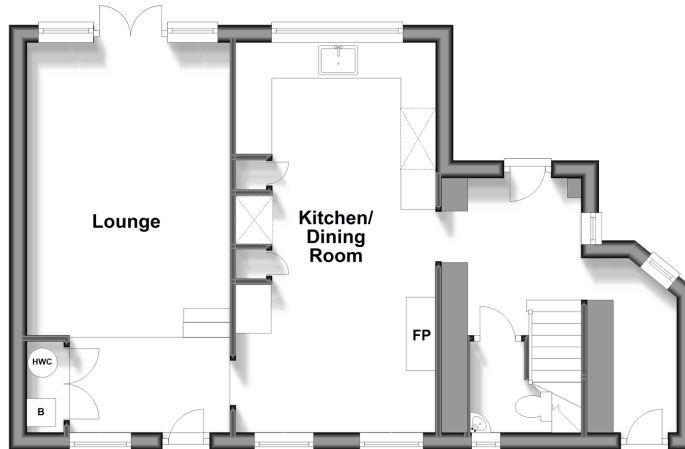
First Floor

Approx. 62.1 sq. metres (668.0 sq. feet)



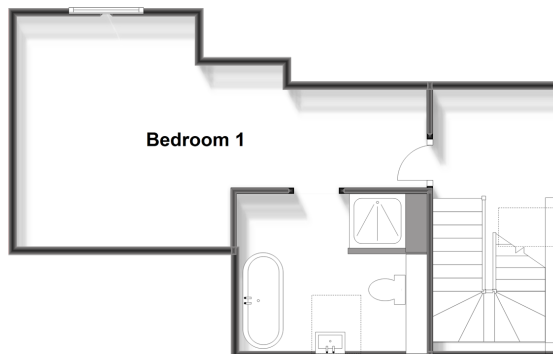
Split Level Ground Floor

Approx. 61.5 sq. metres (661.5 sq. feet)



Second Floor

Approx. 39.8 sq. metres (428.0 sq. feet)



Accommodation

GROUND FLOOR

Hallway

Cloakroom

Kitchen/Dining Room: 21'11 x 13'1 (6.68m x 3.99m)

Lounge: 21'10 x 10'10 (6.66m x 3.30m)

Utility Area

FIRST FLOOR

Landing

Family Room: 12'2 x 12'2 (3.71m x 3.71m)

Bedroom 2: 12'2 x 10'8 (3.71m x 3.25m)

Bedroom 3: 12'2 x 10'9 (3.71m x 3.28m)

Bathroom

Separate Toilet

SECOND FLOOR

Landing

Bedroom 1: 22'10 x 13'1 (6.96m x 3.99m)

Ensuite Bathroom

OUTSIDE

Private Gardens

Outbuilding

Allocated Parking

Communal Grounds



Main features

- A portion of an impressive Victorian stately home within a delightful setting
- Serene communal grounds & allocated parking
- Private walled garden with outbuilding
- Many character features
- Double aspect lounge, kitchen/dining room & family room
- Stunning main bedroom with ensuite bathroom
- Fairwarp village and local pub nearby



Nearest Schools

Primary Schools: Bonners CofE School 2.4 miles, Buxted CofE Primary 2.6 miles, Manor Primary 3.7 miles

Secondary Schools: Uckfield Community Technology College 3.7 miles, Chailey Heritage School 7.0 miles



Transport Information

Train Stations: Plumpton 9.9 miles, Cooksbridge 10. miles, Lewes 11. miles



Address

The Stone House, Oldlands Hall, Herons Ghyll, East Sussex, TN22



Directions

For directions to this property please contact us.



cubitt&west
Helping you move forwards

Call Uckfield Branch 01825 768915 ■ cubittandwest.co.uk



- Legal advice should be taken to verify fixtures/fittings, planning, alterations and/or lease details
- Appliances & services are untested, dimensions are approximate and floor plans are not to scale
- Through a Homewise Home For Life Plan people aged 60+ can secure this property for up to 59% less, by purchasing a Lifetime Lease.



22824001/20231113/JS/RSE