



Price
£395,000

Freehold

3x  1x  1x 

**Church Marks Lane, East
Hoathly, East Sussex,
BN8**

OVER 60?

Secure this property
for up to **59% less!**

cubitt&west
Helping you move forwards



Main features

- Beautifully presented home in a desirable village location
- Recently refitted windows, doors & kitchen
- Catch the afternoon sun on the patio in the pretty rear garden
- Updated heating system with air source heat pump
- Garage & driveway

Accommodation

GROUND FLOOR

Hallway

Cloakroom

Lounge: 14'3 x 11'4 (4.35m x 3.46m)

Kitchen/Dining Room: 17'3 x 8'7 (5.26m x 2.62m)

FIRST FLOOR

Landing

Bedroom 1: 13'9 x 8'7 (4.19m x 2.62m)

Bedroom 2: 11'3 x 10'1 (3.43m x 3.08m)

Bedroom 3: 8'1 x 6'11 (2.47m x 2.11m)

Bathroom

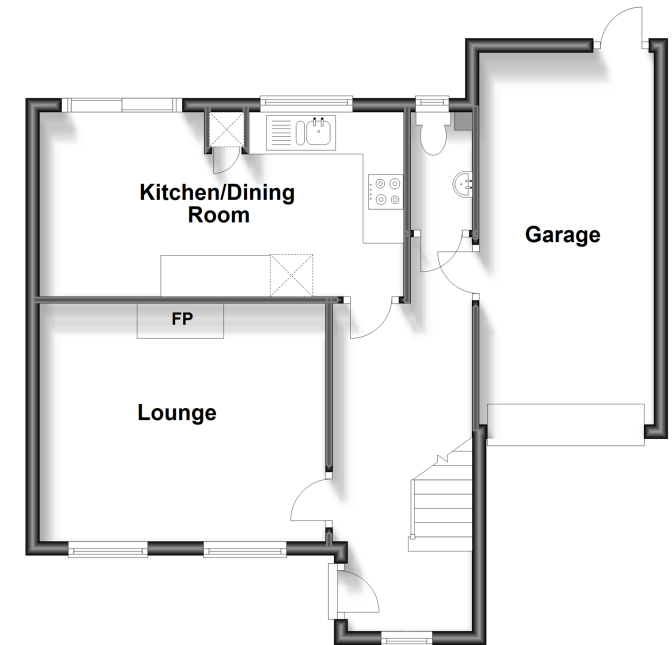
OUTSIDE

Front & Rear Gardens

Garage & Driveway

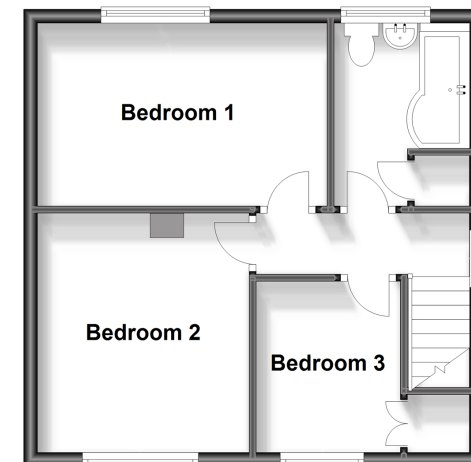
Ground Floor

Approx. 54.8 sq. metres (590.0 sq. feet)



First Floor

Approx. 38.5 sq. metres (414.8 sq. feet)



Call Uckfield - 01825 768915 ■ cubittandwest.co.uk

- Legal advice should be taken to verify fixtures/fittings, planning, alterations and/or lease details
- Appliances & services are untested, dimensions are approximate and floor plans are not to scale
- Through a Homewise Home For Life Plan people aged 60+ can secure this property for up to 59% less, by purchasing a Lifetime Lease.



22824013/20230930/JL/RSE