



Guide Price
£350,000

Freehold

3x  1x  1x 

**Nevill Road, Uckfield,
East Sussex, TN22**

OVER 60?

Secure this property
for up to **59% less!**

cubitt&west
Helping you move forwards



Main features

- Well presented family home
- Stunning, modern kitchen with dining area
- Driveway for 2 cars with space for garage (subject to planning permission) at the rear
- Close to local walks and woodland
- Sunny rear garden

Accommodation

GROUND FLOOR

Hallway

Lounge: 14'9 x 13'3 (4.50m x 4.04m)

Dining Area: 9'3 x 7'8 (2.82m x 2.34m)

Kitchen: 9'3 x 8'5 (2.82m x 2.57m)

FIRST FLOOR

Landing

Bedroom 1: 14'11 x 8'11 (4.55m x 2.72m)

Bedroom 2: 9'3 x 8'10 (2.82m x 2.69m)

Bedroom 3: 9'5 x 7'3 (2.87m x 2.21m)

Bathroom

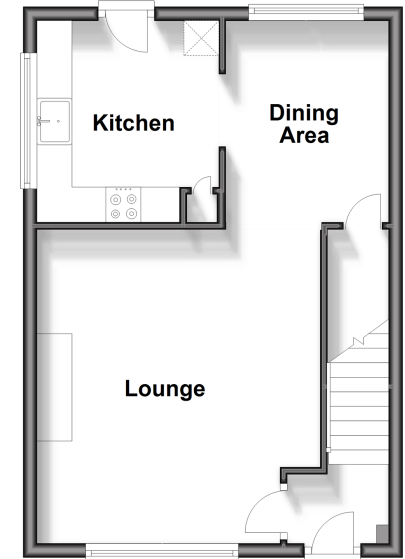
OUTSIDE

Front & Rear Gardens

Off-Road Parking

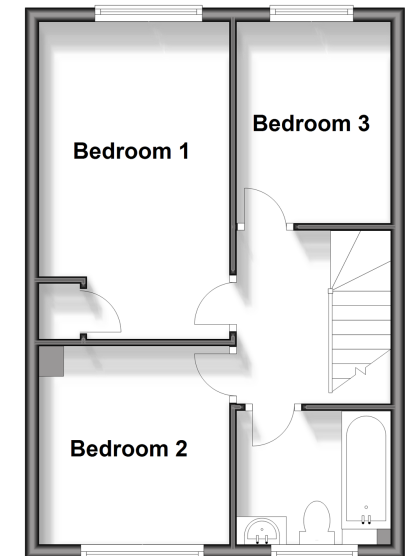
Ground Floor

Approx. 37.4 sq. metres (403.0 sq. feet)



First Floor

Approx. 37.4 sq. metres (403.0 sq. feet)



Call Uckfield - 01825 768915 ■ cubittandwest.co.uk

- Legal advice should be taken to verify fixtures/fittings, planning, alterations and/or lease details
- Appliances & services are untested, dimensions are approximate and floor plans are not to scale
- Through a Homewise Home For Life Plan people aged 60+ can secure this property for up to 59% less, by purchasing a Lifetime Lease.



22824126/20240405/FT/RSE