



Price
£725,000

Freehold

4x  2x  2x 

**Brickhurst Lane,
Laughton, BN8**

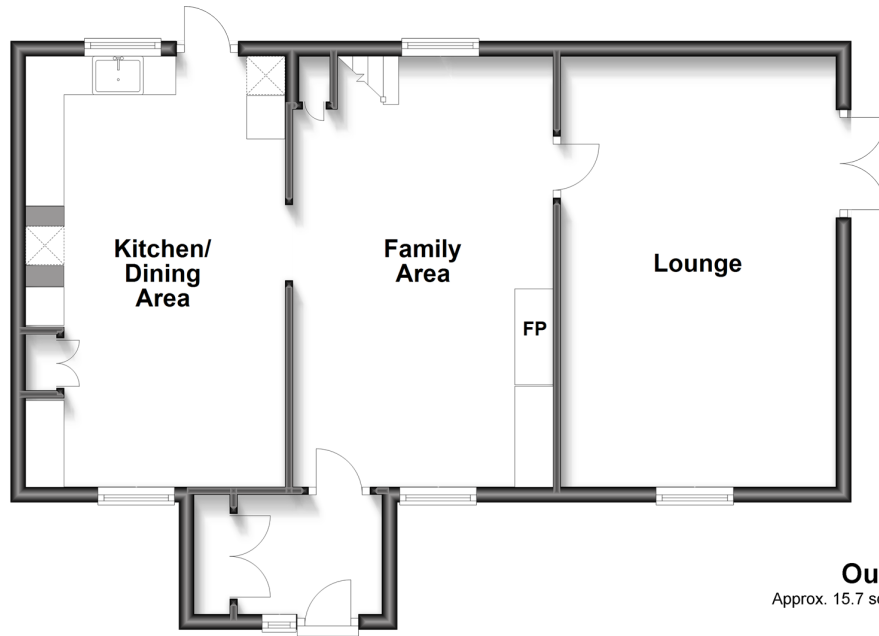
OVER 60?

Secure this property
for up to **59% less!**

cubitt&west
Helping you move forwards

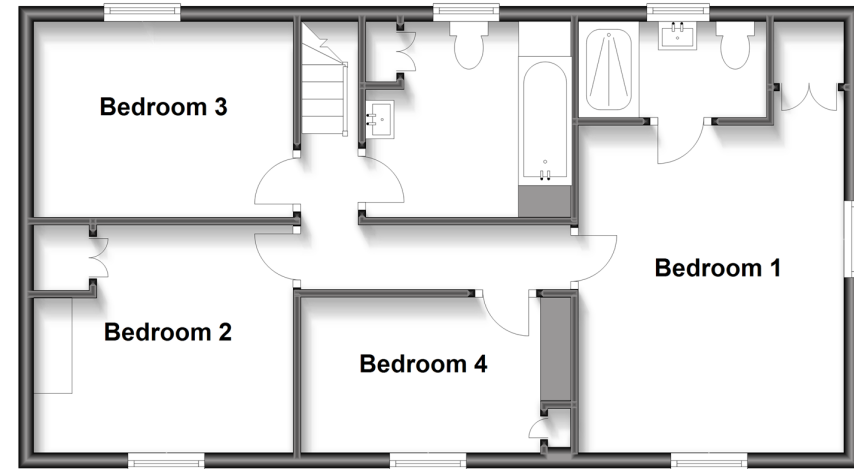
Ground Floor

Approx. 63.4 sq. metres (682.9 sq. feet)



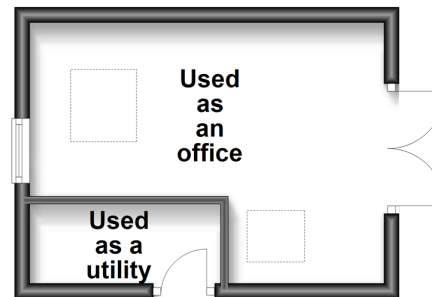
First Floor

Approx. 59.4 sq. metres (639.2 sq. feet)



Outbuilding

Approx. 15.7 sq. metres (169.1 sq. feet)



Accommodation

GROUND FLOOR

Porch

Family Area: 18'6 x 11'0 (5.64m x 3.36m)

Lounge: 18'2 x 11'9 (5.54m x 3.58m)

Kitchen/Dining Area: 18'7 x 11'0 (5.67m x 3.36m)

FIRST FLOOR

Landing

Bedroom 1: 13'8 x 11'10 (4.17m x 3.61m)

Ensuite Shower Room

Bedroom 2: 11'0 x 8'4 (3.36m x 2.54m)

Bedroom 3: 10'1 x 10'1 (3.08m x 3.08m)

Bedroom 4: 10'8 x 6'11 (3.25m x 2.11m)

Bathroom

OUTSIDE

Front, Side & Rear Garden

Self Contained Office/Studio

Driveway



Main features

- A family home designed with contemporary 'boutique' styling & reassuring period features
- Envious, quiet off-lane position with picturesque rear & side gardens & private driveway
- Outbuilding currently used as an office & utility
- Main bedroom with ensuite shower room
- Offered with no onward chain



Nearest Schools

Primary Schools: Laughton Community Primary 0.6 miles, Chiddingfold Primary 3.5 miles, Ringmer Primary 3.8 miles. Secondary Schools: Ringmer Community College 3.5 miles, St Bede's School 5.1 miles, Lewes Old Grammar School 7.3 miles



Transport Information

Train Stations: Lewes 7.2 miles, Glynde 5.6 miles, Berwick 7.6 miles



Address

Brickhurst Lane, Laughton, BN8



Directions

For directions to this property please contact us.



cubitt&west
Helping you move forwards

Call Lewes Branch (01273) 471231 ■ cubittandwest.co.uk



■ Legal advice should be taken to verify fixtures/fittings, planning, alterations and/or lease details ■ Appliances & services are untested, dimensions are approximate and floor plans are not to scale
■ Through a Homewise Home For Life Plan people aged 60+ can secure this property for up to 59% less, by purchasing a Lifetime Lease.



23006969/20230609/JL1/JM