

**OVER 60?**

You could get up to  
**59% off the price!\***



**Price**

**£625,000**

**Freehold**

3x  2x  1x 

Butlers Way, Ringmer, East Sussex, BN8

**cubitt&west**  
Helping you move forwards



## Main features

- Detached bungalow ideal for putting your own stamp on
- Ensuite bathroom & separate shower room
- Double garage & driveway
- Walking distance to local parade of shops & village green
- Primary & secondary schools close by

## Accommodation

### GROUND FLOOR

#### Hallway

**Kitchen:** 10'6 x 9'6 (3.20m x 2.90m)

**Lounge/Dining Area:** 29'9 L-shaped x 20'6 maximum (9.07m x 6.25m)

**Bedroom 1:** 16'4 x 12'5 (4.98m x 3.79m)

#### Ensuite Bathroom

**Bedroom 2:** 13'2 x 12'3 (4.02m x 3.74m)

**Bedroom 3:** 13'5 x 9'3 (4.09m x 2.82m)

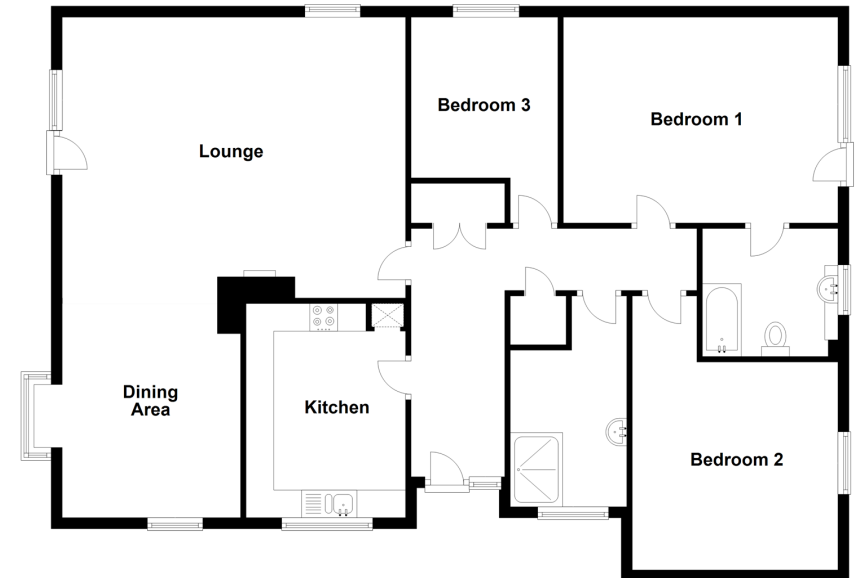
#### Shower Room

### OUTSIDE

#### Front & Rear Gardens

#### Double Garage & Driveway

**Ground Floor**  
Approx. 128.8 sq. metres (1386.4 sq. feet)



**Call Lewes - (01273) 471231 ■ [cubittandwest.co.uk](http://cubittandwest.co.uk)**

- Legal advice should be taken to verify fixtures/fittings, planning, alterations and/or lease details
- Appliances & services are untested, dimensions are approximate and floor plans are not to scale
- Our Homewise partnership offer a 'Home for Life' plan to buyers over 60, granting a lifetime lease for your protection and reducing the purchase price by up to 59%



23008327/20211019/JL1/RS