



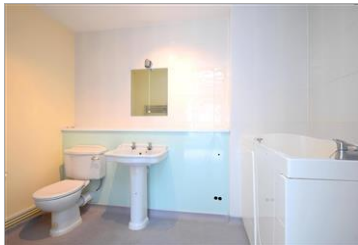
Price
£390,000

Leasehold

2x  2x  1x 

**Greyfriars Court, Court
Road, Lewes, East
Sussex, BN7**

cubitt&west
Helping you move forwards



Main features

- A modernised, first floor retirement apartment
- Only a short, level walk to the shops, mainline station & bus routes
- 24hr duty manager on call, emergency pull cords
- Allocated off-road parking
- Pretty communal garden

Accommodation

FIRST FLOOR

Hallway

Lounge/Dining Room: 21'5 x 10'0
(6.53m x 3.05m)

Kitchen: 10'5 x 6'5 (3.18m x 1.96m)

Bedroom 1: 10'8 x 7'2 (3.25m x 2.19m)

Ensuite Wet Room

Bedroom 2: 14'5 x 8'8 (4.40m x 2.64m)

Wet Room

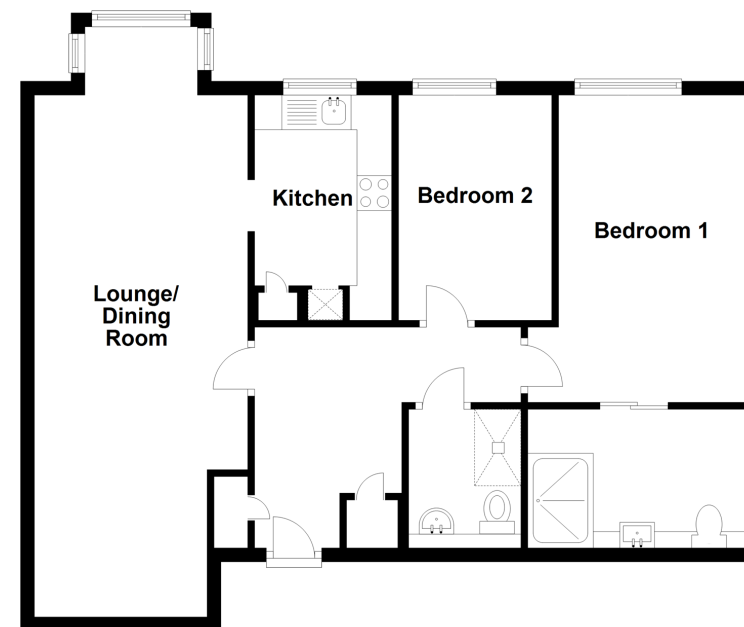
OUTSIDE

Communal Gardens

Allocated Parking

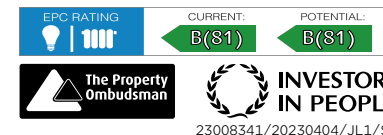
First Floor

Approx. 71.2 sq. metres (766.4 sq. feet)



Call Lewes - (01273) 471231 ■ cubittandwest.co.uk

- Legal advice should be taken to verify fixtures/fittings, planning, alterations and/or lease details
- Appliances & services are untested, dimensions are approximate and floor plans are not to scale



23008341/20230404/JL1/SL