



Price
£260,000

Leasehold

1x  1x  1x 

**Clayhill Court, The
Nurseries, Lewes, East
Sussex, BN7**

OVER 60?

You could get up to
59% off the price!*

cubitt&west
Helping you move forwards



Main features

- Bright & sizeable third (top) floor apartment
- Generous open plan living space with contemporary kitchen
- Juliet balcony
- Allocated parking & communal gardens
- Walking distance to playing fields, town centre & supermarkets

Accommodation

THIRD FLOOR

Lounge/Kitchen/Diner: 23'2 x 11'9 (7.07m x 3.58m)

Bedroom: 11'6 at widest point x 10'3 (3.51m x 3.13m)

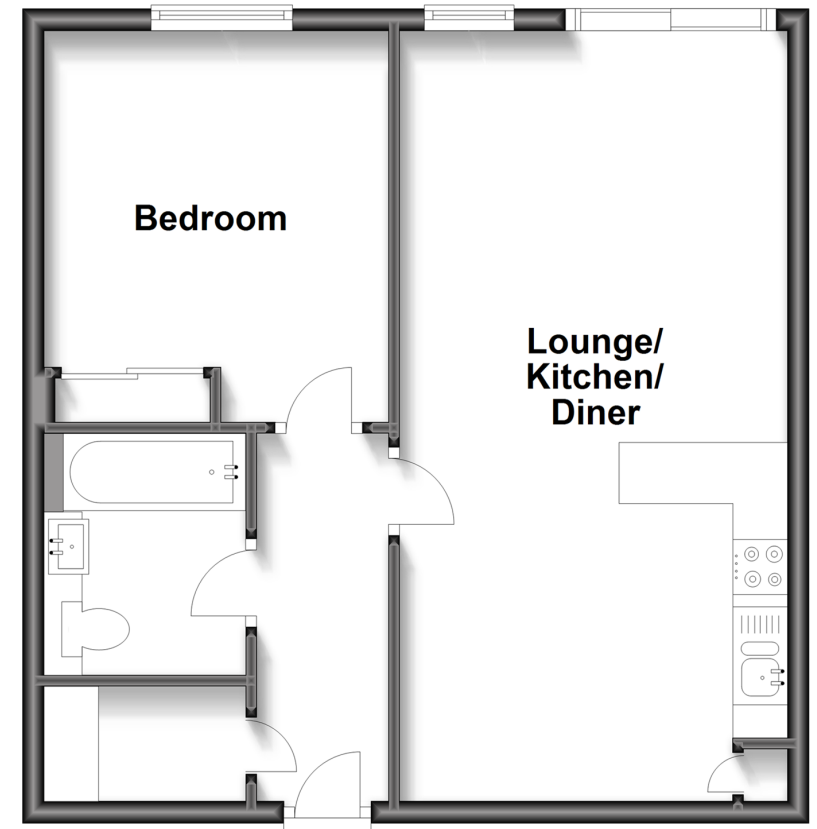
Bathroom

OUTSIDE

Allocated Parking
Communal Gardens

Third Floor

Approx. 47.7 sq. metres (513.9 sq. feet)



Call Lewes - (01273) 471231 ■ cubittandwest.co.uk

- Legal advice should be taken to verify fixtures/fittings, planning, alterations and/or lease details
- Appliances & services are untested, dimensions are approximate and floor plans are not to scale
- Our Homewise partnership offer a 'Home for Life' plan to buyers over 60, granting a lifetime lease for your protection and reducing the purchase price by up to 59%



23008607/20220804/JL1/KK