

OVER 60?

Secure this property
for up to **59% less!**

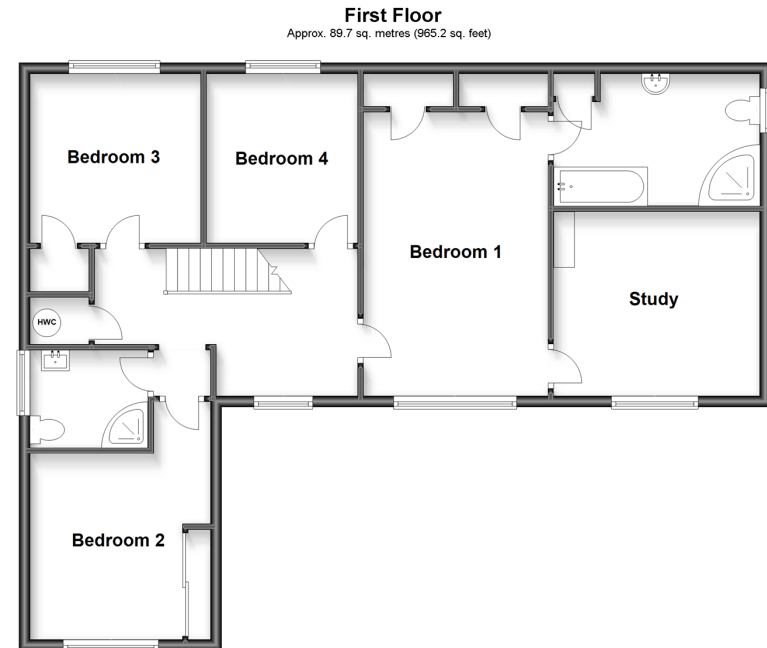
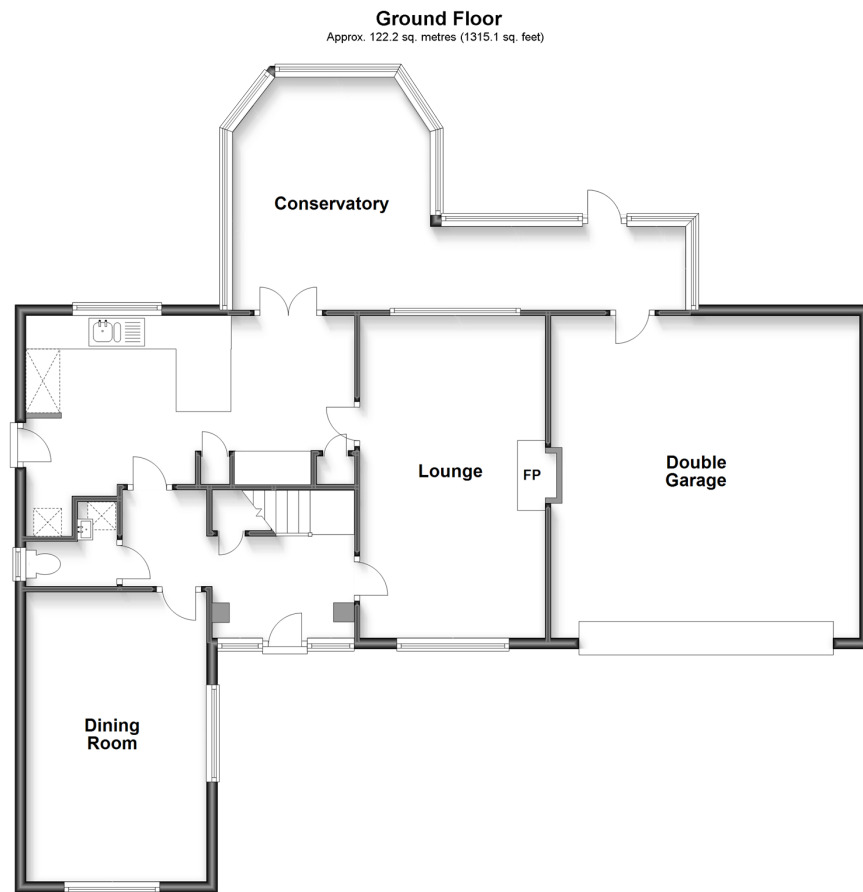


Price
£650,000
Freehold

4x  2x  2x 

Hornbuckles Close, South Chailey, East
Sussex, BN8

cubitt&west
Helping you move forwards



Accommodation

GROUND FLOOR

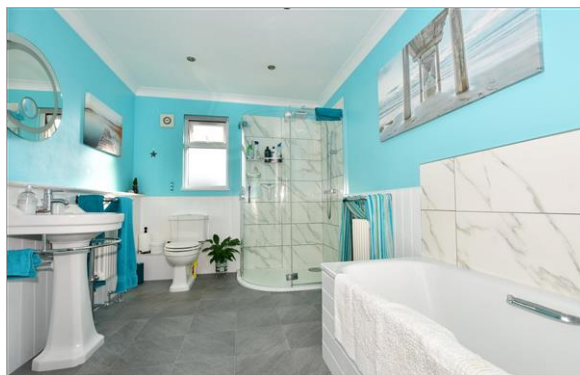
Hallway
Cloakroom
Dining Room: 16'7 x 10'8 (5.06m x 3.25m)
Lounge: 18'9 x 11'2 (5.72m x 3.41m)
Kitchen/Diner: 19'4 x 10'6 (5.90m x 3.20m)
Conservatory: 14'2 x 12'7 (4.32m x 3.84m)

FIRST FLOOR

Landing
Study: 12'1 x 10'9 (3.69m x 3.28m)
Bedroom 1: 10'0 x 9'9 (3.05m x 2.97m)
Ensuite Bathroom
Bedroom 2: 10'9 x 10'6 (3.28m x 3.20m)
Bedroom 3: 9'9 x 9'0 (2.97m x 2.75m)
Bedroom 4: 16'6 x 10'8 (5.03m x 3.25m)
Shower Room

OUTSIDE

Front, Side & Rear Gardens
Double Garage & Driveway



Main features

- A wonderful family home with a beautiful garden & secluded patio area
- Private gated driveway with double garage
- Main bedroom with en suite bathroom & study
- Wood panelled dining room
- Peaceful countryside location yet walking distance to the local school & shop



Nearest Schools

Primary Schools: Chailey St Peter's C of E Primary (with nursery school adjacent) 1.7 miles, Hamsey Community Primary 2.6 miles, Plumpton Primary 3.2 miles. Secondary Schools: Chailey School 0.4 miles, Chailey Heritage School 2.8 miles, Downlands Community School 5.1 miles



Transport Information

Train Stations: Cooksbridge 2.9 miles, Plumpton 3.4 miles, Burgess Hill 5.7 miles, Lewes 5.8 miles



Address

Hornbuckles Close, South Chailey, East Sussex, BN8



Directions

For directions to this property please contact us.



cubitt&west
Helping you move forwards

Call Lewes Branch (01273) 471231 ■ cubittandwest.co.uk



- Legal advice should be taken to verify fixtures/fittings, planning, alterations and/or lease details
- Appliances & services are untested, dimensions are approximate and floor plans are not to scale
- Through a Homewise Home For Life Plan people aged 60+ can secure this property for up to 59% less, by purchasing a Lifetime Lease.



23008697/20230503/GD/JM