



Guide Price
£599,999

Freehold

3x  1x  2x 

**Appledean Corner,
South Chailey, East
Sussex, BN8**

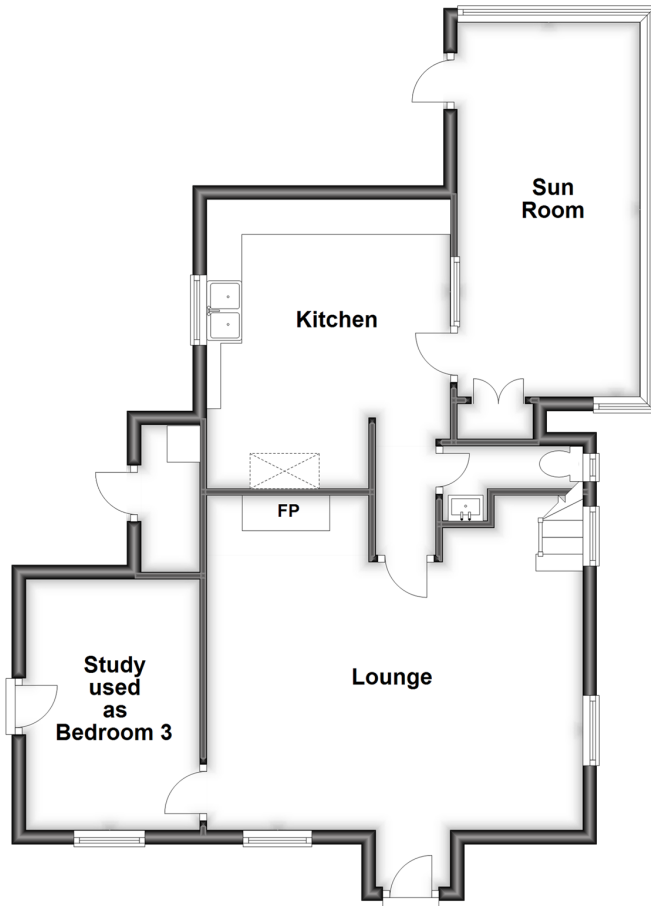
OVER 60?

Secure this property
for up to **59% less!**

cubitt&west
Helping you move forwards

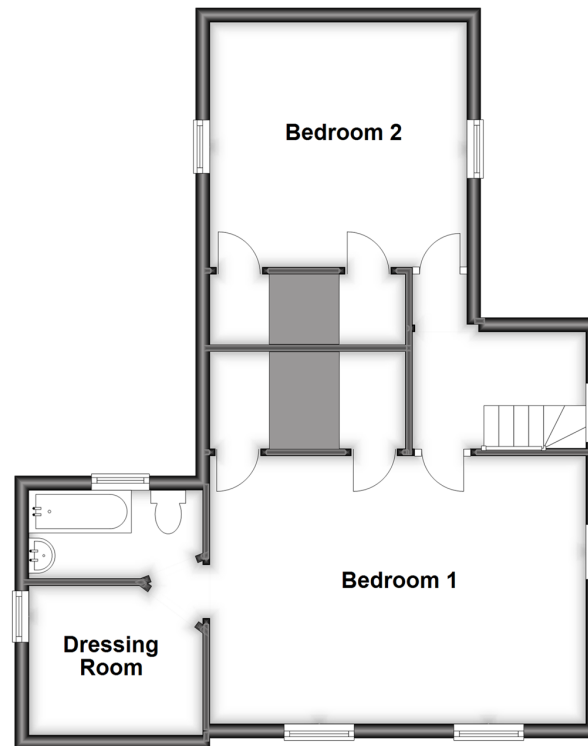
Ground Floor

Approx. 66.8 sq. metres (718.8 sq. feet)



First Floor

Approx. 55.2 sq. metres (594.6 sq. feet)



Accommodation

GROUND FLOOR

Lounge: 17'6 x 12'6 (5.34m x 3.81m)

Kitchen: 14'6 x 11'5 (4.42m x 3.48m)

Sun Room: 15'8 x 8'7 (4.78m x 2.62m)

Study used as Bedroom 3: 11'7 x 7'6 (3.53m x 2.29m)

Cloakroom

FIRST FLOOR

Landing

Bedroom 1: 17'8 x 12'4 (5.39m x 3.76m)

Dressing Room: 8'2 x 7'5 (2.49m x 2.26m)

Ensuite Bathroom

Bedroom 2: 11'6 x 11'2 (3.51m x 3.41m)

OUTSIDE

Front & Rear Garden

Workshop: 20'7 x 9'2 (6.28m x 2.80m)

Garage & Driveway

OUTBUILDING

Space 1: 11'2 x 8'7 (3.41m x 2.62m)

Space 2: 10'8 x 7'1 (3.25m x 2.16m)

Shower Room



Main features

- Stunning Grade 2 Listed detached house
- Includes an outbuilding, workshop, garage & driveway
- Plenty of character features including beams & fireplaces
- Sun room & large wrap round garden
- Delightful village location, close to local shop & schools



Nearest Schools

Primary Schools: Chailey St Peter's C of E Primary 1.4 miles, Plumpton Primary 1.7 miles, Barcombe C of E Primary 2.0 miles. Secondary Schools: Chailey School 0.3 miles, Chailey Heritage School 2.3 miles, Newick House School 4.3 miles



Transport Information

Train Stations: Plumpton 1.7 miles, Cocksbridge 2.5 miles, Uckfield 5.5 miles, Lewes 5.7 miles



Address

Appledean Corner, South Chailey, East Sussex, BN8



Directions

For directions to this property please contact us.



cubitt&west
Helping you move forwards

Call Lewes Branch (01273) 471231 ■ cubittandwest.co.uk



- If buying to let, the energy rating will need to be improved to at least 'E' rating before you can let the property
- Appliances & services are untested, dimensions are approximate and floor plans are not to scale

- Legal advice should be taken to verify fixtures/fittings, planning, alterations and/or lease details
- Through a Homewise Home For Life Plan people aged 60+ can secure this property for up to 59% less, by purchasing a Lifetime Lease.



23008698/20230427/JL1/JM