



Price
£710,000

Freehold

4x  2x  3x 

**Barnfield, Plumpton
Green, East Sussex, BN7**

cubitt&west
Helping you move forwards



Main features

- Well presented family home in the heart of Plumpton Green
- Main bedroom with en-suite bathroom
- Views from some rooms across to the race course
- Wrap around garden to 3 sides
- Off road parking for several vehicles

Accommodation

GROUND FLOOR

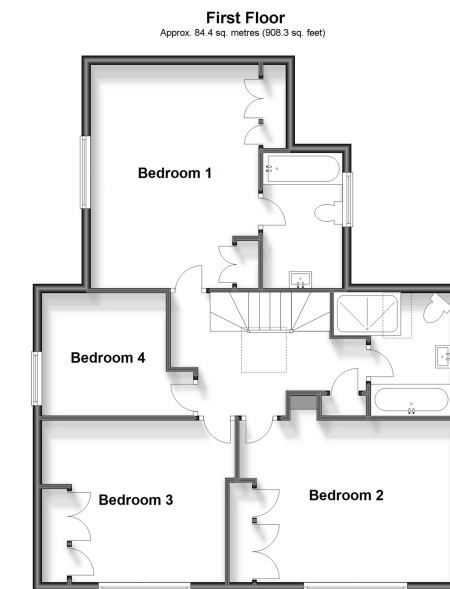
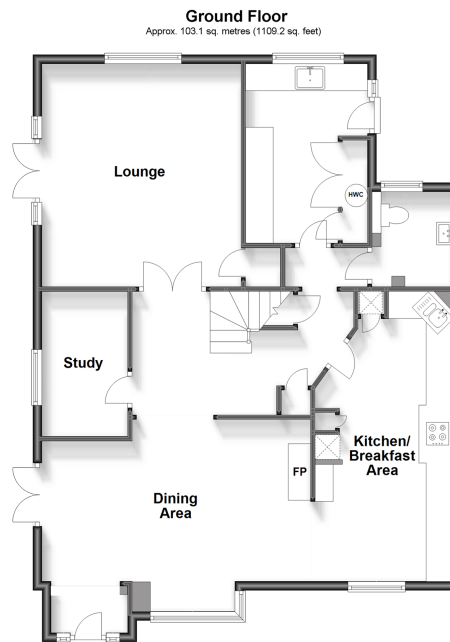
Lounge: 18'5 x 14'9 (5.62m x 4.50m)
 Dining Area: 16'5 x 14'7 (5.01m x 4.45m)
 Study: 10'6 x 6'2 (3.20m x 1.88m)
 Kitchen/Breakfast Area: 20'11 x 10'0 (6.38m x 3.05m)
 Utility Room: 12'10 x 8'11 (3.91m x 2.72m)
 Cloakroom

FIRST FLOOR

Landing
 Bedroom 1: 16'4 x 12'7 (4.98m x 3.84m)
 Ensuite Bathroom
 Bedroom 2: 15'8 x 11'8 (4.78m x 3.56m)
 Bedroom 3: 14'2 x 11'7 (4.32m x 3.53m)
 Bedroom 4: 10'9 x 6'2 (3.28m x 1.88m)
 Bathroom

OUTSIDE

Front, Side & Rear Gardens
 Driveway



Call Lewes - (01273) 471231 ■ cubittandwest.co.uk

- Legal advice should be taken to verify fixtures/fittings, planning, alterations and/or lease details
- Appliances & services are untested, dimensions are approximate and floor plans are not to scale