



OVER 60?

Secure this property
for up to **59% less!**

Price

£446,500

Freehold

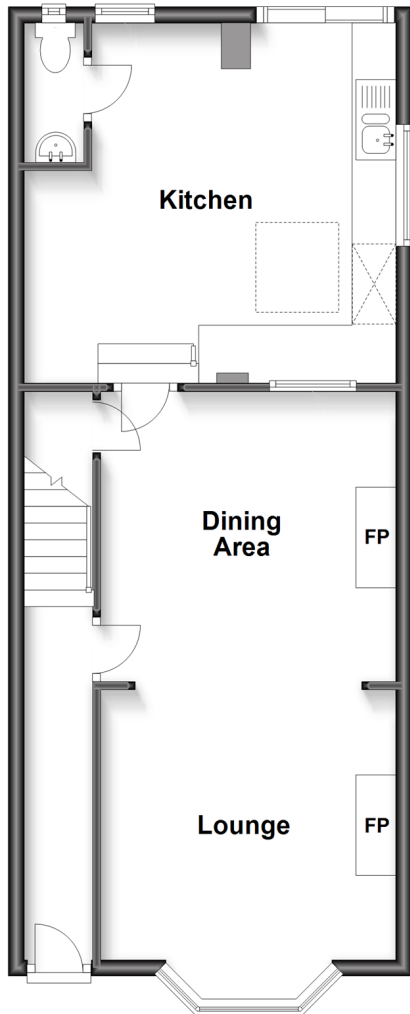
3x  2x  2x 

**Ford Road, Ford,
Arundel, West Sussex
BN18**

cubitt&west
Helping you move forwards

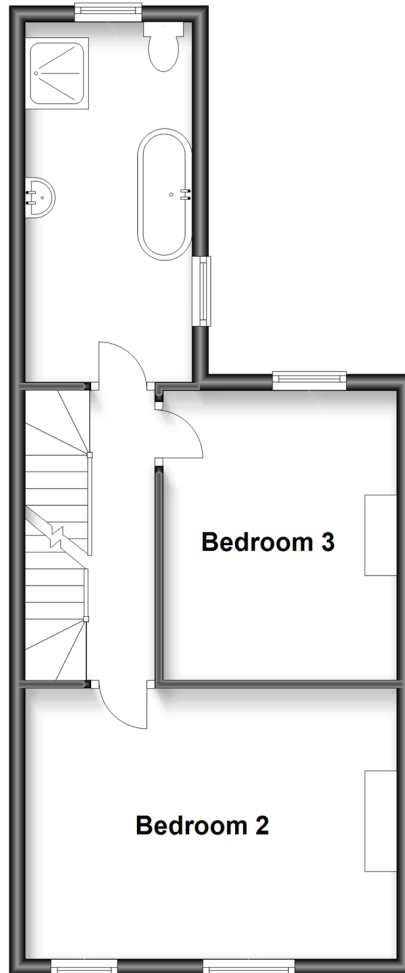
Split Level Ground Floor

Approx. 54.5 sq. metres (586.8 sq. feet)



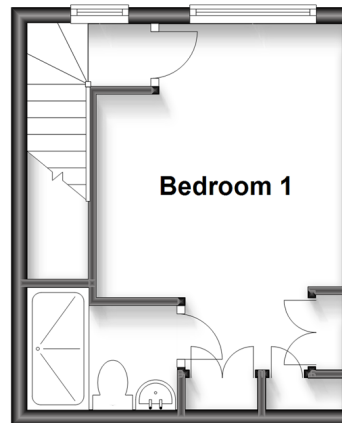
First Floor

Approx. 42.5 sq. metres (457.4 sq. feet)



Second Floor

Approx. 19.0 sq. metres (204.2 sq. feet)



Accommodation

SPLIT-LEVEL GROUND FLOOR

Entrance Hall

Lounge: 11'8 into bay x 10'10 into recess (3.56m x 3.30m)

Dining Area: 11'11 x 10'8 into recess (3.63m x 3.25m)

Kitchen: 14'4 (4.37m) x 13'10 (4.22m) narrowing to 10'11 (3.33m)

Cloakroom

FIRST FLOOR

Landing

Bedroom 2: 14'11 into alcove x 10'5 (4.55m x 3.18m)

Bedroom 3: 11'11 x 9'4 (3.63m x 2.85m)

Bathroom

SECOND FLOOR

Landing

Bedroom 1: 13'6 up to fitted wardrobes x 10'2 (4.12m x 3.10m)

En Suite Shower Room: 6'1 x 4'2 (1.86m x 1.27m)

OUTSIDE

Front Garden

Rear Garden



Main features

- Opened up to offer generous modern open plan living space
- Beautifully presented throughout with contemporary kitchen with island
- Excellent sized family bathroom plus en suite to the main bedroom
- Spacious, well maintained garden
- Just a short distance to the historic market town centre



Nearest Schools

Primary Schools: St Philip's Catholic Primary, Arundel 0.3 miles, Arundel CofE Primary 0.4 miles. Secondary Schools: Cornfield School, Littlehampton 2.4 miles, Littlehampton Community School, 2.7 miles.. Further Education: Littlehampton Community School 2.7 miles.



Transport Information

Train Stations: Arundel 0.8 miles, Ford 1.5 miles, Littlehampton 2.9 miles



Address

Ford Road, Ford, Arundel, West Sussex BN18



Directions

For directions to this property please contact us.



cubitt&west
Helping you move forwards

Call Arundel Branch 01903 884420 ■ cubittandwest.co.uk



■ Legal advice should be taken to verify fixtures/fittings, planning, alterations and/or lease details ■ Appliances & services are untested, dimensions are approximate and floor plans are not to scale
■ Through a Homewise Home For Life Plan people aged 60+ can secure this property for up to 59% less, by purchasing a Lifetime Lease.



23215315/20230904/RH/DW