



Price
£85,000
Leasehold

1x  1x  1x 

Causeway Court, Queen Street, Arundel,
West Sussex BN18

cubitt&west
Helping you move forwards



Main features

- Charming flat with parking- ideal bolthole for active individual
- Bright neutrally finished lounge
- Well kept communal garden with patio
- Ideally positioned with bus stop & the Arundel lido on your doorstep
- Short walk from bustling historic town centre with shops and cafes

Accommodation

FIRST FLOOR

Entrance Hall

Lounge : 12'4 x 12'2 (3.76m x 3.71m)

Kitchen : 8'0 (2.44m) x 7'1 maximum (2.16m) narrowing to 5'9 minimum (1.75m)

Bathroom : 7'5 x 5'8 (2.26m x 1.73m)

Bedroom : 13'11 x 7'5 (4.24m x 2.26m)

OUTSIDE

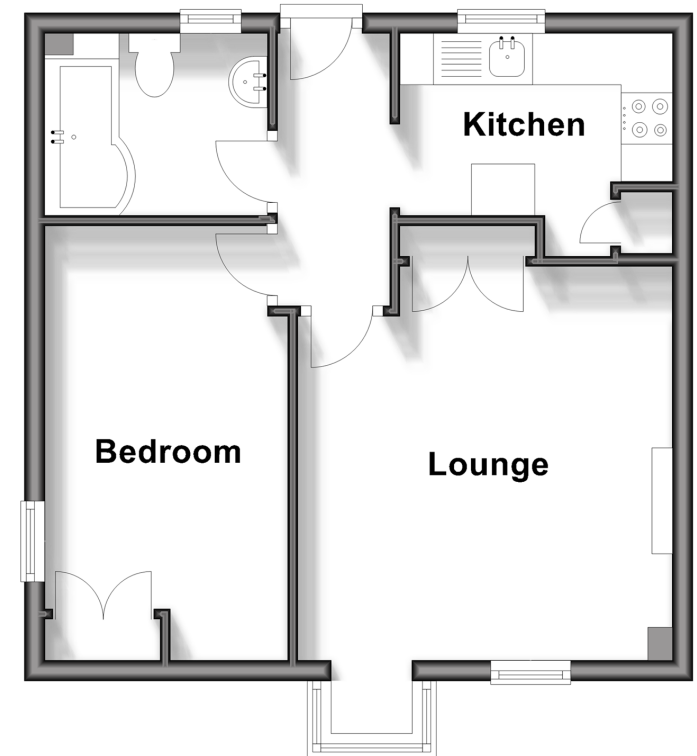
Communal Garden

Residents & Visitors Parking

Outside Storage Cupboard

First Floor

Approx. 37.6 sq. metres (404.9 sq. feet)



Call Arundel - 01903 884420 ■ cubittandwest.co.uk

- Legal advice should be taken to verify fixtures/fittings, planning, alterations and/or lease details
- Appliances & services are untested, dimensions are approximate and floor plans are not to scale