



Price
£245,000
Leasehold

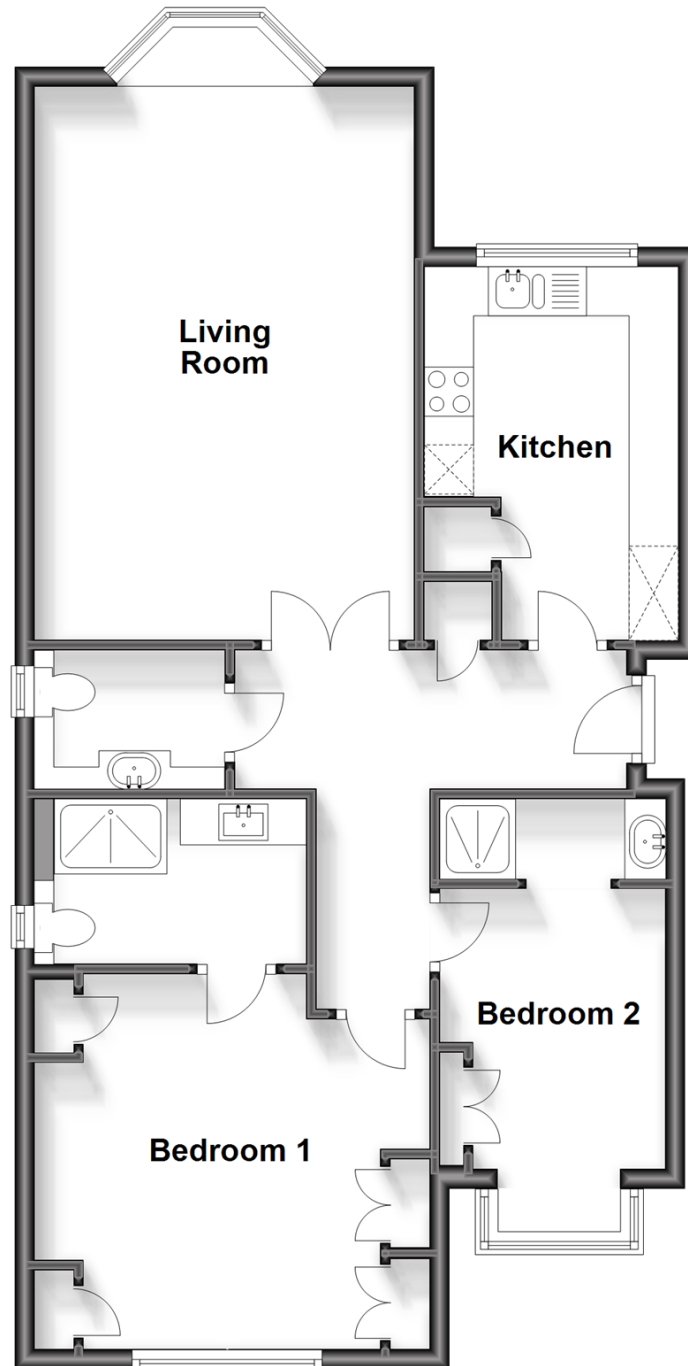
2x  2x  1x 

Batworth Park, Crossbush, Arundel, West
Sussex BN18

cubitt&west
Helping you move forwards

First Floor

Approx. 74.0 sq. metres (796.8 sq. feet)



Accommodation

FIRST FLOOR

Entrance Hall

Living Room: 18'4 x 12'8 (5.59m x 3.86m)

Kitchen: 12'5 x 8'2 (3.79m x 2.49m)

Cloakroom: 5'8 x 4'7 (1.73m x 1.40m)

Bedroom One: 13'5 into fitted wardrobes x 12'6 (4.09m x 3.81m)

En-suite Shower Room: 8'5 x 5'3 (2.57m x 1.60m)

Bedroom Two: 9'4 x 7'6 (2.85m x 2.29m)

En-suite Shower Room: 7'7 x 2'7 (2.31m x 0.79m)

OUTSIDE

Garage

Communal Gardens & Lawn



Main features

- Charming first floor apartment in prestigious converted Victorian Manor for the over 55s
- Lounge has views over the extensive communal gardens and rolling green countryside
- Parking available & garage with light and power
- Located in peaceful semi-rural spot just outside of Arundel for shops, restaurants and entertainment



Nearest Schools

Primary Schools: Arundel CofE Primary 1.9 miles, St Philip's Catholic Primary, Arundel 2.0 miles

Secondary Schools: Cornfield School, Littlehampton 3.0 miles



Transport Information

Train Stations: Arundel 0.5 miles, Ford 3.1 miles, Littlehampton 3.4 miles



Address

Batworth Park, Crossbush, Arundel, West Sussex BN18



Directions

For directions to this property please contact us.



cubitt&west
Helping you move forwards

Call Arundel Branch 01903 884420 ■ cubittandwest.co.uk



■ Legal advice should be taken to verify fixtures/fittings, planning, alterations and/or lease details ■ Appliances & services are untested, dimensions are approximate and floor plans are not to scale



23216514/20231002/1B/DW