



Video Tour available

Price

£90,000

Leasehold

1x  1x  1x 

Causeway Court, Queen Street, Arundel,
West Sussex BN18

cubitt&west
Helping you move forwards



Main features

- Ground floor retirement apartment with private entrance
- Useful storage cupboard right outside
- Communal gardens for sitting in the sun plus hanging your washing out
- Spacious lounge with electric fireplace
- Freshly painted
- Excellent position in the heart of the historic town with shops, cafes, riverside walks, swimming pool & bus stop on your doorstep
- No forward chain

Accommodation

GROUND FLOOR

Entrance Hall

Lounge: 12'9 x 11'10 (3.89m x 3.61m)

Bedroom: 12'9 x 7'9 (3.89m x 2.36m)

Shower Room: 6'10 x 5'9 (2.08m x 1.75m)

OUTSIDE

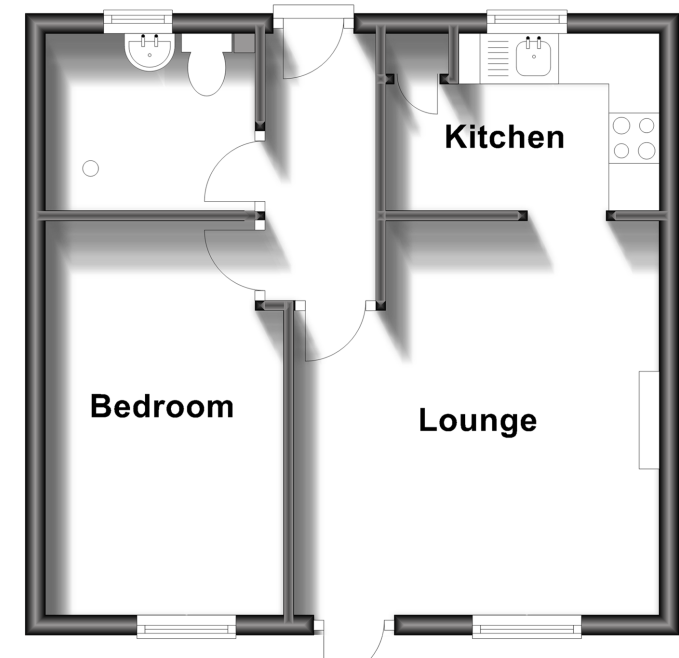
Communal Gardens

Residents' Parking

Lock up Storage Cupboard

Ground Floor

Approx. 35.1 sq. metres (378.3 sq. feet)



Call Arundel - 01903 884420 ■ cubittandwest.co.uk

■ Legal advice should be taken to verify fixtures/fittings, planning, alterations and/or lease details

■ Appliances & services are untested, dimensions are approximate and floor plans are not to scale



23217313/20221101/KT/DW