

**OVER 60?**

Secure this property  
for up to **59% less!**



Video Tour available

**Price**

**£345,000**

**Share of Freehold**

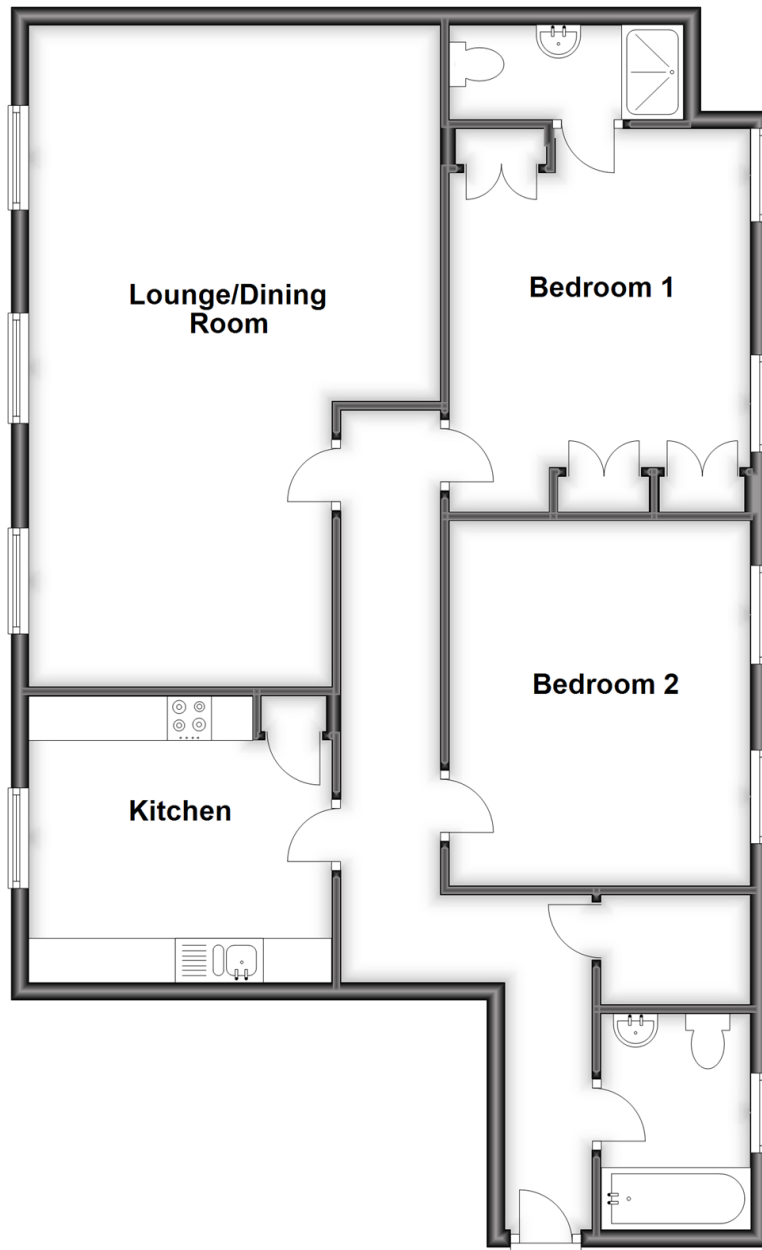
2x  2x  1x 

New England Wing, Tortington Manor,  
Ford Road, Arundel, West Sussex BN18

**cubitt&west**  
Helping you move forwards

## Second Floor

Approx. 95.5 sq. metres (1027.6 sq. feet)



## Accommodation

### SECOND FLOOR

Entrance Hall

Lounge/Dining Room: (L-shaped) 15'9 x 13'10 (4.80m x 4.22m) plus 11'4 x 10'7 (3.46m x 3.23m)

Kitchen: 11'4 x 10'7 (3.46m x 3.23m)

Bedroom 1: 12'3 up to fitted wardrobes x 11'1 (3.74m x 3.38m)

En Suite Shower Room: 8'6 x 3'7 (2.59m x 1.09m)

Bedroom 2: 13'5 x 11'3 (4.09m x 3.43m)

Bathroom: 7'8 x 5'7 (2.34m x 1.70m)

### OUTSIDE

Garage

Allocated Parking Space

Communal Gardens

Residents' Tennis Courts

Visitors' Parking





## Main features

- Superb apartment in an elegant country mansion just outside Arundel
- Stunning views reaching across the Arun Valley with Arundel Castle framed against the fields
- Well maintained bright interior
- Generous lounge/dining room
- Beautiful managed grounds with gravel paths through acres of idyllic gardens & tennis courts
- Share of freehold plus long lease



### Nearest Schools

Primary Schools: Arundel CoFE Primary 1.1 miles, St Philip's Catholic Primary, Arundel 1.4 miles. Secondary Schools: St Philip Howard Catholic High School 2.9 miles, Bishop Luffa CoFE School, 10 miles.. Further Education: Littlehampton Community School 2.4 miles.



### Transport Information

Train Stations: Ford 0.5 miles, Arundel 1.5 miles, Littlehampton 2.3 miles



### Address

New England Wing, Tortington Manor, Ford Road, Arundel, West Sussex BN18



### Directions

For directions to this property please contact us.





**cubitt&west**  
Helping you move forwards

Call Arundel Branch 01903 884420 ■ [cubittandwest.co.uk](https://cubittandwest.co.uk)



- Legal advice should be taken to verify fixtures/fittings, planning, alterations and/or lease details
- Appliances & services are untested, dimensions are approximate and floor plans are not to scale
- Through a Homewise Home For Life Plan people aged 60+ can secure this property for up to 59% less, by purchasing a Lifetime Lease.



23217356/20240408/1B/DW