



Price

£500,000

Leasehold

2x  2x  1x 

**Arundel Wing,
Tortington Manor, Ford
Road, Arundel, West
Sussex BN18**

OVER 60?

Secure this property
for up to **59% less!**

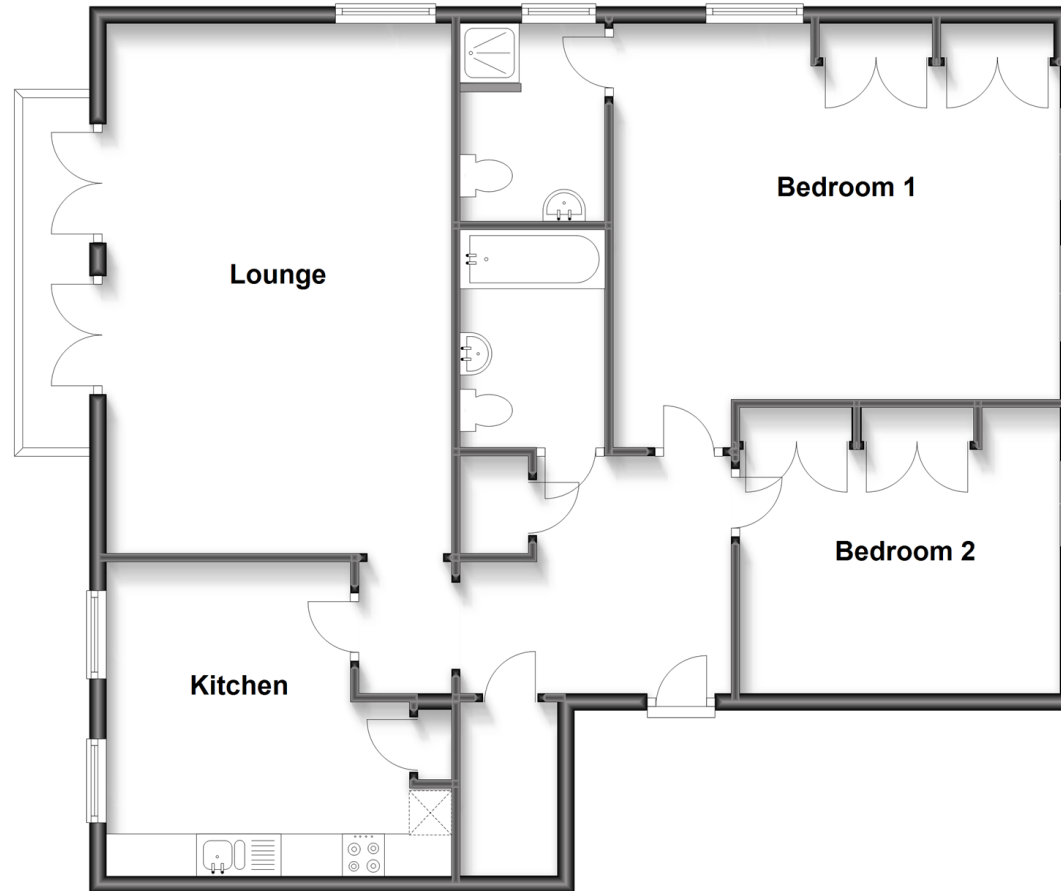


Video Tour available

cubitt&west
Helping you move forwards

First Floor

Approx. 100.9 sq. metres (1086.3 sq. feet)



Accommodation

FIRST FLOOR

Hallway

Lounge: 20'7 x 13'4 (6.28m x 4.07m)

Balcony: 6'9 x 3'9 (2.06m x 1.14m)

Kitchen: 12'11 x 12'6 at widest point
(3.94m x 3.81m)

Bedroom 1: 17'6 x 14'4 at widest point
(5.34m x 4.37m)

En Suite Shower Room: 6'8 x 5'8
(2.03m x 1.73m)

Bedroom 2: 13'4 x 11'0 up to fitted
wardrobes (4.07m x 3.36m)

Bathroom: 8'6 x 5'6 (2.59m x 1.68m)

OUTSIDE

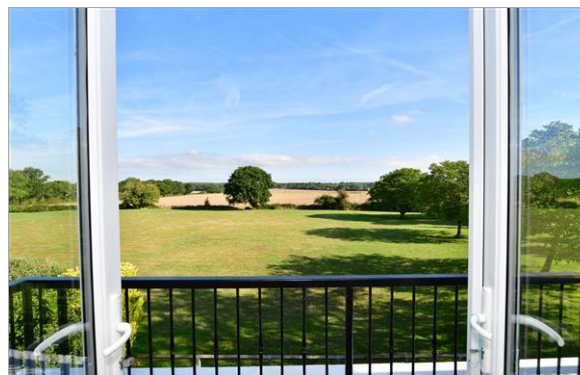
Garage

Allocated Parking Space

Visitors' Parking

Communal Gardens

Residents' Tennis Courts



Main features

- Stunning double aspect lounge with wonderful views and balcony
- Excellent access with lift almost direct to the front door
- Acres of managed grounds to wander through plus tennis courts
- Beautifully presented generous main bedroom with bespoke fitted wardrobes
- Modern kitchen with space to dine



Nearest Schools

Further Education: Chichester College 12.5 miles, Chichester University 11.9 miles, West Dean College 15.5 miles. Primary: St Philips Catholic 1.8 miles, Arundel CofE Primary 2 miles. Secondary: St Philip Howard 2.9 miles.



Transport Information

Train Stations: Ford 0.8 miles, Arundel 2.5 miles, Littlehampton 3.9 miles



Address

Arundel Wing, Tortington Manor, Ford Road, Arundel, West Sussex BN18



Directions

For directions to this property please contact us.



cubitt&west
Helping you move forwards

Call Arundel Branch 01903 884420 ■ cubittandwest.co.uk



- Legal advice should be taken to verify fixtures/fittings, planning, alterations and/or lease details
- Appliances & services are untested, dimensions are approximate and floor plans are not to scale
- Through a Homewise Home For Life Plan people aged 60+ can secure this property for up to 59% less, by purchasing a Lifetime Lease.



23217398/20230414/GS1/DW