



Price

£235,000

Leasehold

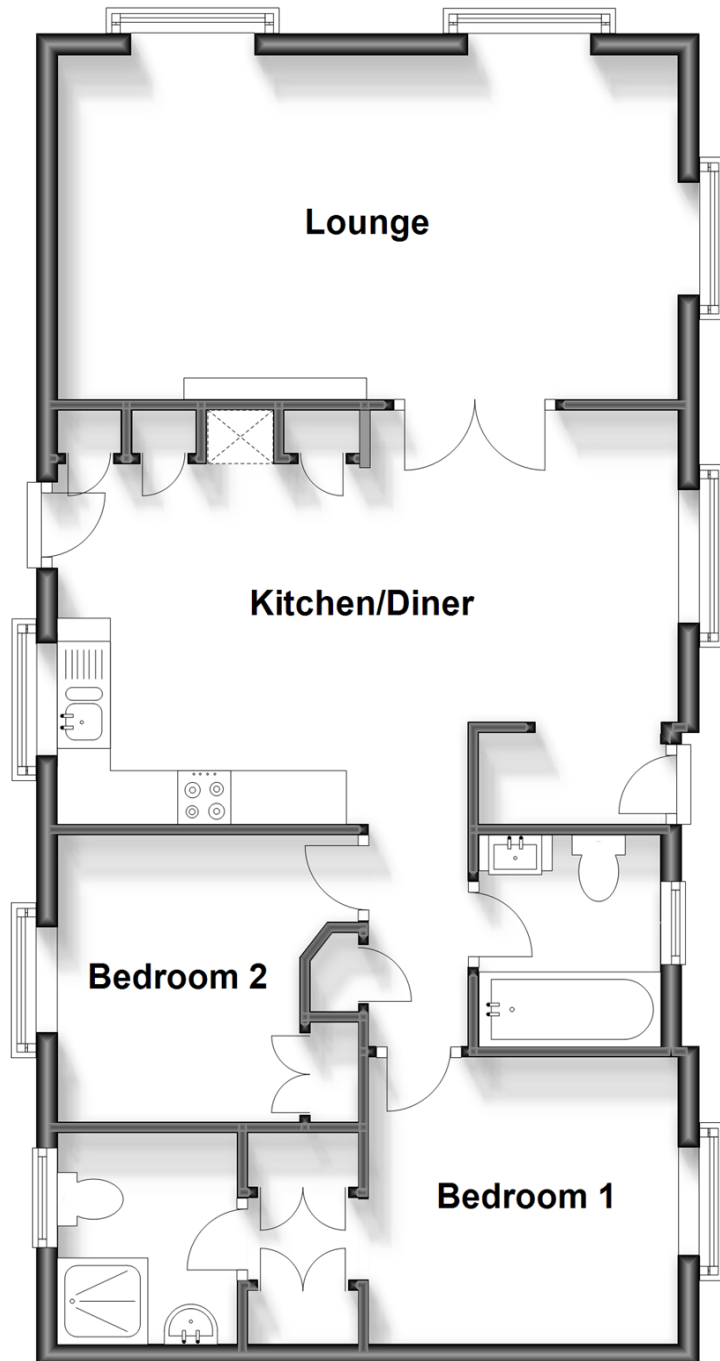
2x  2x  1x 

Havenwood, Arundel, West Sussex BN18

cubitt&west
Helping you move forwards

Ground Floor

Approx. 70.7 sq. metres (760.6 sq. feet)



Accommodation

GROUND FLOOR

Entrance Lobby

Kitchen/Diner: 19'2 at widest point x 12'8 at widest point (5.85m x 3.86m)

Lounge: 19'5 x 10'5 (5.92m x 3.18m)

Bedroom 1: 9'7 x 8'9 (2.92m x 2.67m)

Dressing Area

En-Suite Shower Room: 6'5 x 5'6 (1.96m x 1.68m)

Bedroom 2: 8'8 at widest point x 7'5 at widest point (2.64m x 2.26m)

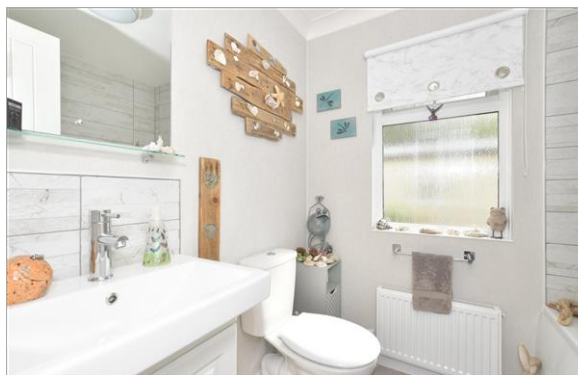
Bathroom: 6'6 x 5'6 (1.98m x 1.68m)

OUTSIDE

Surrounding Garden

Private Driveway

Visitors' Parking



Main features

- Stunning nearly new residential park home
- Luxury fitted kitchen with integrated appliances
- Over 50s residential site surrounded by woodland
- Wrap around gardens and block paved driveway
- Short drive to Arundel and Climping Beach
- Pets allowed with permission
- Insulated floor, walls, and loft



Nearest Schools

Further Education at Chichester College, Chichese University, West Dean College, and Northbrook College in Worthing.



Transport Information

Train Stations: Ford 1.9 miles, Arundel 2.2 miles, Barnham 2.5 miles



Address

Havenwood, Arundel, West Sussex BN18



Directions

For directions to this property please contact us.



cubitt&west
Helping you move forwards

Call Arundel Branch 01903 884420 ■ cubittandwest.co.uk



■ If buying to let, the energy rating will need to be improved to at least 'E' rating before you can let the property
■ Appliances & services are untested, dimensions are approximate and floor plans are not to scale

■ Legal advice should be taken to verify fixtures/fittings, planning, alterations and/or lease details

23217558/20230605/GS1/DW