

OVER 60?

Secure this property
for up to **59% less!**



Price
£800,000
Freehold

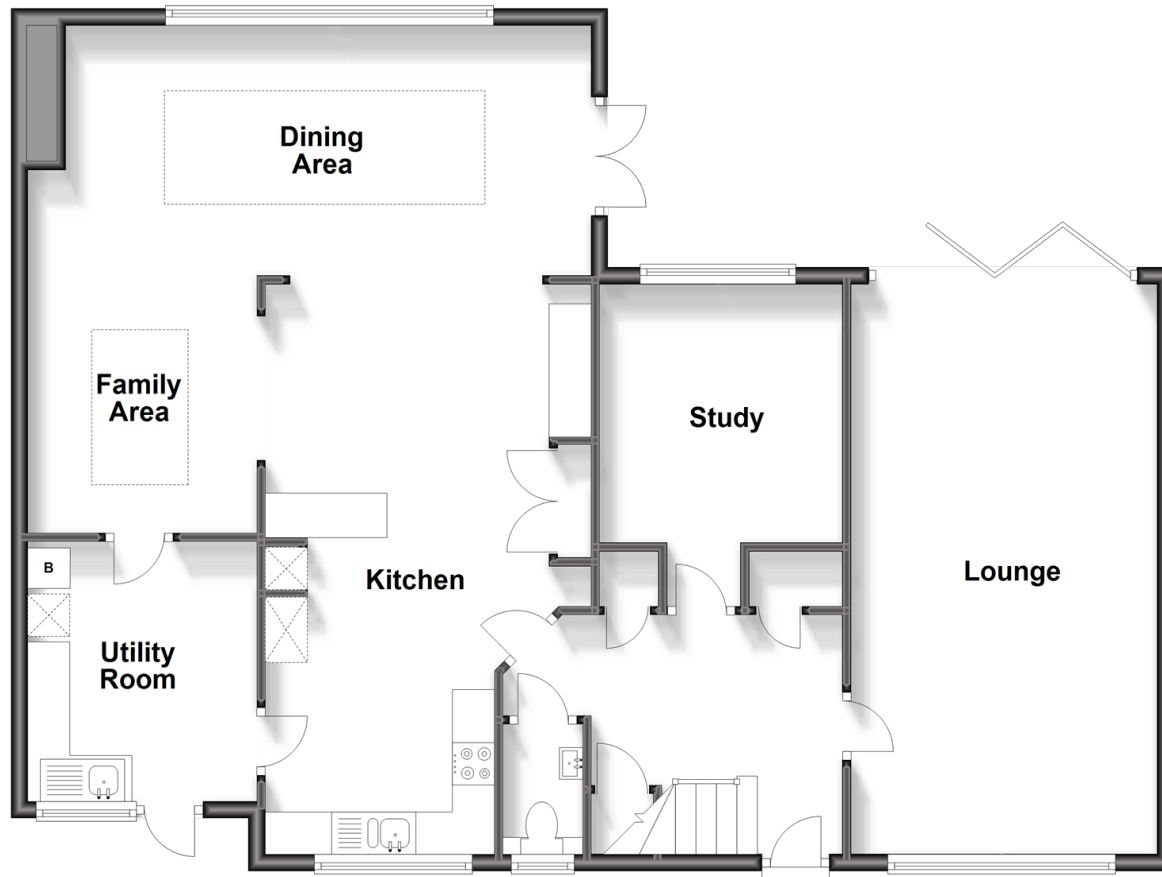
4x  2x  4x 

Poling Street, Poling, Arundel, West Sussex
BN18

cubitt&west
Helping you move forwards

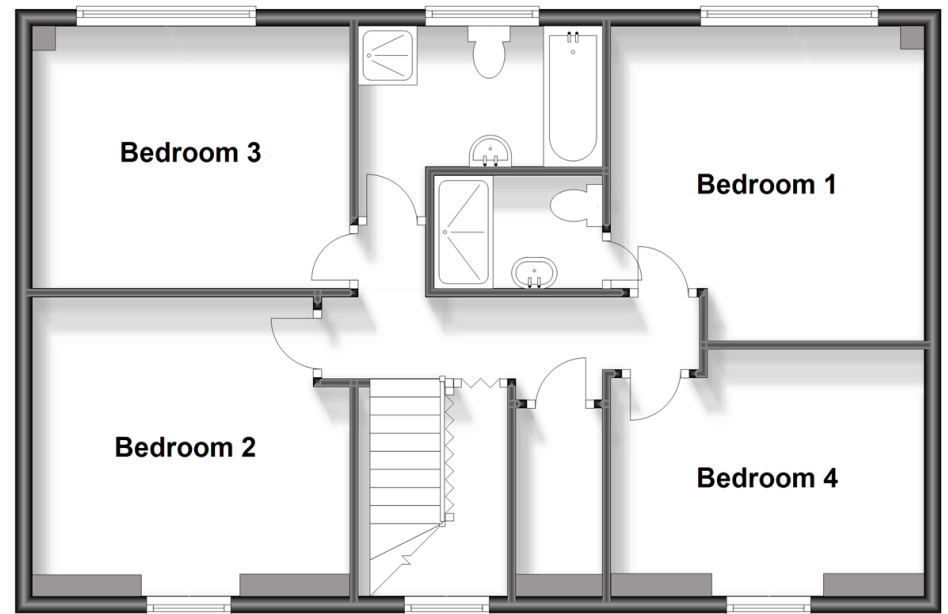
Ground Floor

Approx. 109.2 sq. metres (1175.2 sq. feet)



First Floor

Approx. 71.1 sq. metres (765.5 sq. feet)



Accommodation

GROUND FLOOR

Entrance Hall
 Lounge: 22'2 x 12'0 (6.76m x 3.66m)
 Kitchen: 22'2 x 12'8 (6.76m x 3.86m)
 Family Area
 Utility Room : 9'5 x 8'10 (2.87m x 2.69m)
 Study: 12'7 x 9'7 (3.84m x 2.92m)
 Cloakroom

FIRST FLOOR

First Floor Landing
 Bedroom 1: 12'7 x 11'11 (3.84m x 3.63m)
 En Suite Shower Room
 Bedroom 2: 12'6 x 10'8 (3.81m x 3.25m)
 Bedroom 3: 12'1 x 11'7 (3.69m x 3.53m)
 Bedroom 4: 11'11 x 9'7 (3.63m x 2.92m)
 Family Bathroom

OUTSIDE

Gravel Driveway- Multiple Cars
 Secure Lawned Front Garden
 Rear Garden with Patio & Lawn



Main features

- Spacious family home in an idyllic rural setting
- Finished to a high standard with light-flooded open plan kitchen diner excellent for entertaining
- Separate lounge & study perfect for a busy , working family
- Views over open farmland with garden over looking fields -ideal for alfresco dining
- Tucked away in a vibrant village community, a short drive to Arundel or Worthing



Nearest Schools

Primary Schools: Arundel Church of England Primary School 3.5 miles, St Philips Catholic Primary School 3.5 miles
Secondary Schools: St Oscar Romero Catholic Senior School 5.5 miles The Angmering School 5.7miles



Transport Information

Train Stations: Arundel 1.5 miles, Angmering 1.6 miles, Littlehampton 1.9 miles



Address

Poling Street, Poling, Arundel, West Sussex BN18



Directions

For directions to this property please contact us.



cubitt&west
Helping you move forwards

Call Arundel Branch 01903 884420 ■ cubittandwest.co.uk



■ Legal advice should be taken to verify fixtures/fittings, planning, alterations and/or lease details ■ Appliances & services are untested, dimensions are approximate and floor plans are not to scale
■ Through a Homewise Home For Life Plan people aged 60+ can secure this property for up to 59% less, by purchasing a Lifetime Lease.



23217622/20230825/RH/DW