



OVER 60?

Secure this property
for up to **59% less!**

Guide Price
£340,000

Freehold

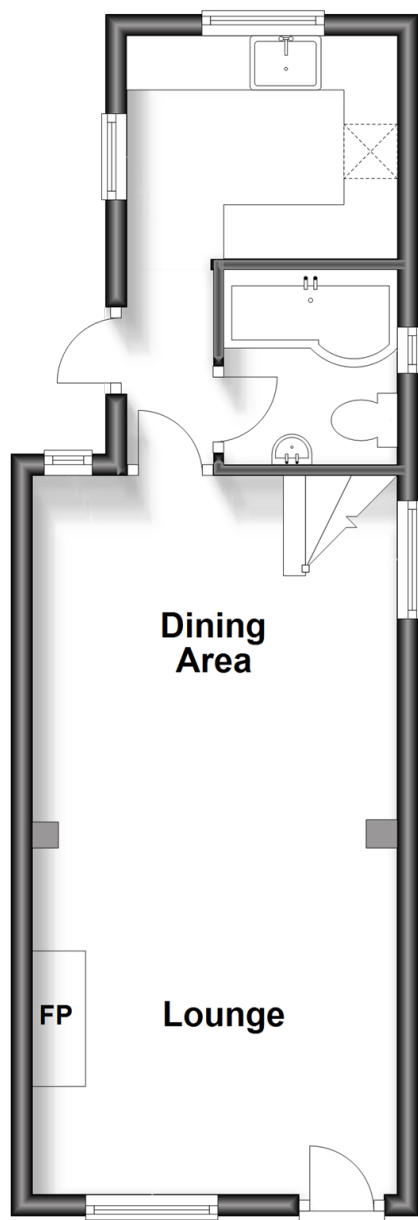
2x  1x  2x 

**The Terrace, Crossbush
Lane, Crossbush,
Arundel, West Sussex
BN18**

cubitt&west
Helping you move forwards

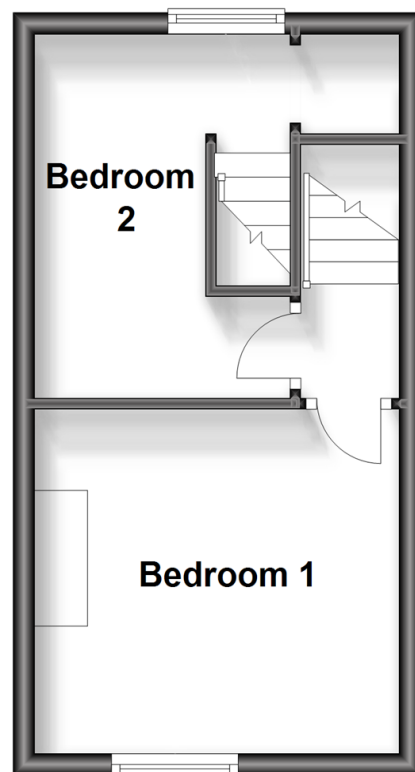
Ground Floor

Approx. 33.0 sq. metres (355.2 sq. feet)



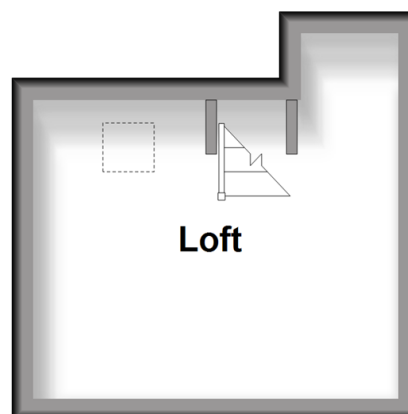
First Floor

Approx. 22.7 sq. metres (244.4 sq. feet)



Second Floor

Approx. 10.0 sq. metres (107.5 sq. feet)



Accommodation

GROUND FLOOR

Lounge : 11'2 x 9'10 (3.41m x 3.00m)

Dining Area: 11'2 x 10'5 (3.41m x 3.18m)

Kitchen : 8'4 x 6'9 (2.54m x 2.06m)

Bathroom

FIRST FLOOR

First Floor Landing

Bedroom 1: 11'3 x 10'6 (3.43m x 3.20m)

Bedroom 2: 11'1 x 5'6 (3.38m x 1.68m)

SECOND FLOOR

Loft Room : 11'6 x 7'1 (3.51m x 2.16m)

OUTSIDE

Rear Garden

Front Walled Garden



Main features

- Charming end of terrace cottage with secluded private garden
- Stunning character features such as exposed brick, gas fired stove, & sash windows
- Attractive cottage kitchen looking out onto lush garden
- Garden has an outhouse with electricity
- Located in a quite tranquil village just outside Arundel



Nearest Schools

Primary Schools: St Philip's Catholic Primary, Arundel 1.5 miles, Arundel CofE Primary 1.8 miles, Summerlea Community Primary 1.8 miles

Secondary Schools: Cornfield School, Littlehampton 1.6



Transport Information

Train Stations: Arundel 0.6 miles, Ford 2.2 miles, Littlehampton 2.4 miles



Address

The Terrace, Crossbush Lane, Crossbush, Arundel, West Sussex BN18



Directions

For directions to this property please contact us.



cubitt&west
Helping you move forwards

Call Arundel Branch 01903 884420 ■ cubittandwest.co.uk



■ Legal advice should be taken to verify fixtures/fittings, planning, alterations and/or lease details ■ Appliances & services are untested, dimensions are approximate and floor plans are not to scale
■ Through a Homewise Home For Life Plan people aged 60+ can secure this property for up to 59% less, by purchasing a Lifetime Lease.



23217652/20240321/IB/DW